

1437

برمجة متقدمة



الشكر والتقدير للمهندس القدير /

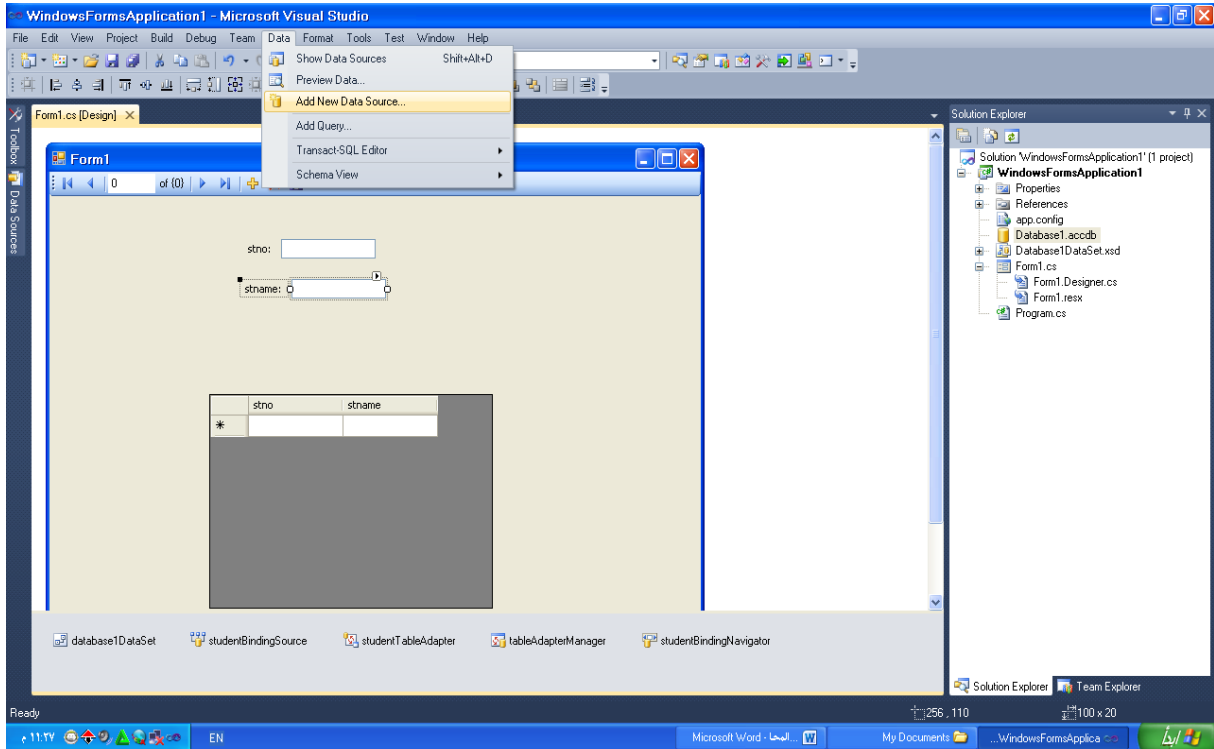
معاذ حمود

م/محمد الشميري

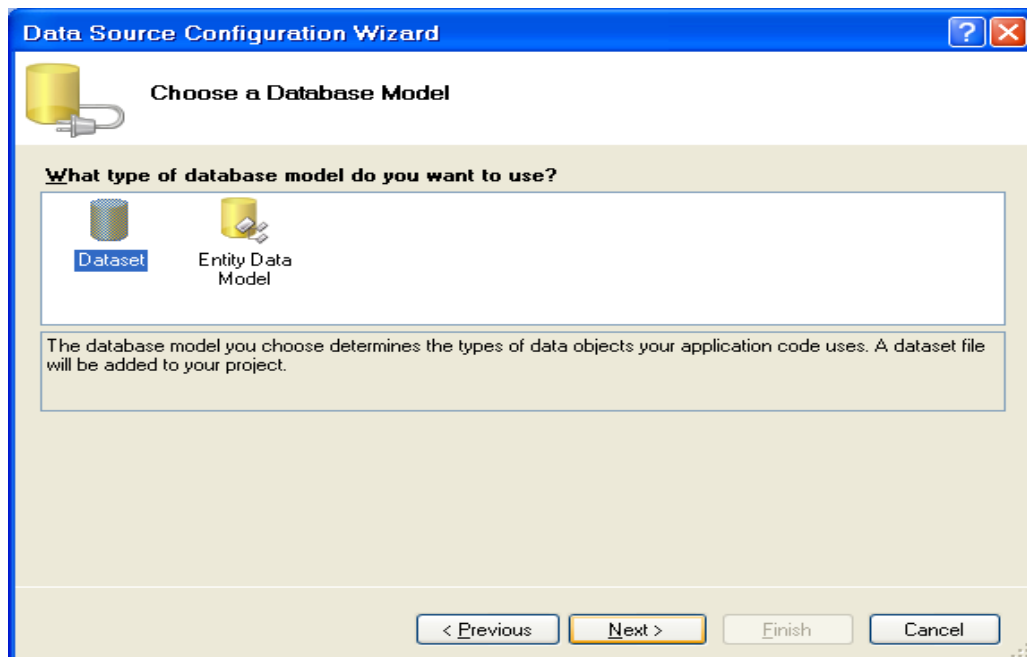
Fb : moha22ye

المحاضرة الاولى

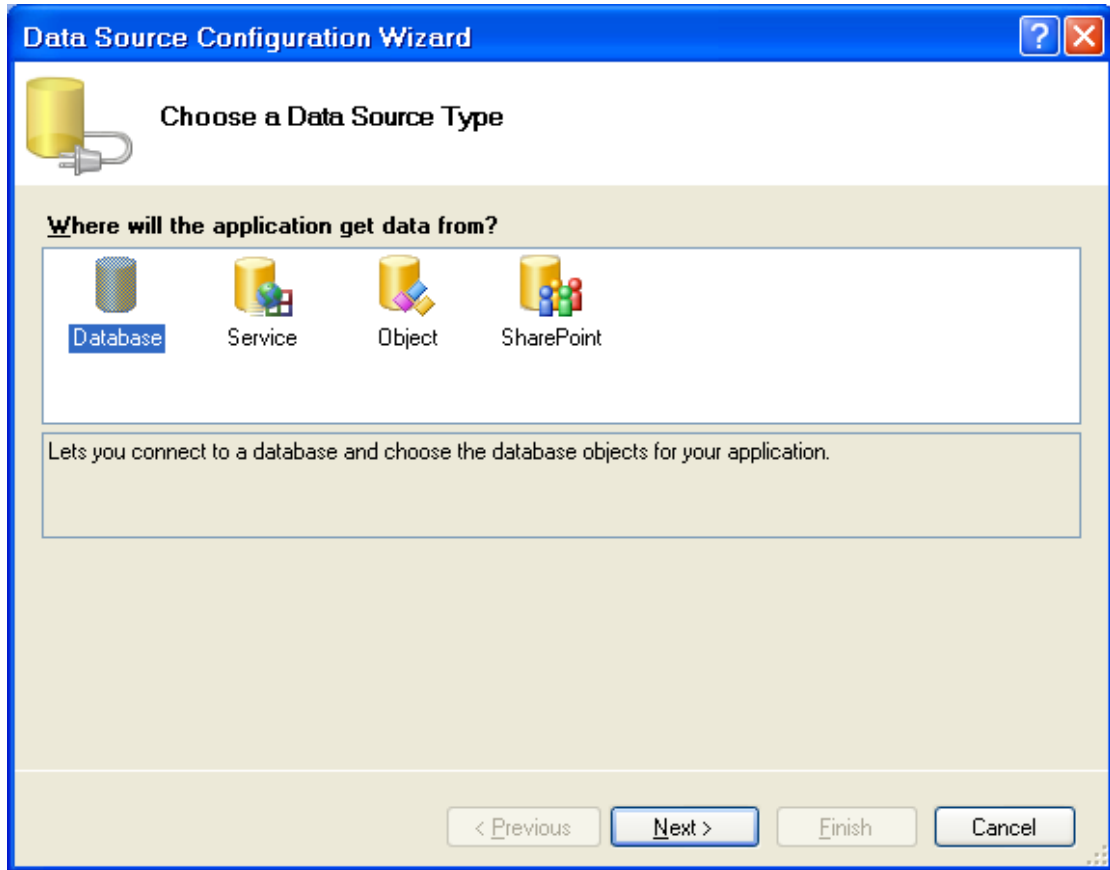
الاتصال بقاعدة البيانات Access باستخدام المعالج
من القائمة Add new data Source ----> data



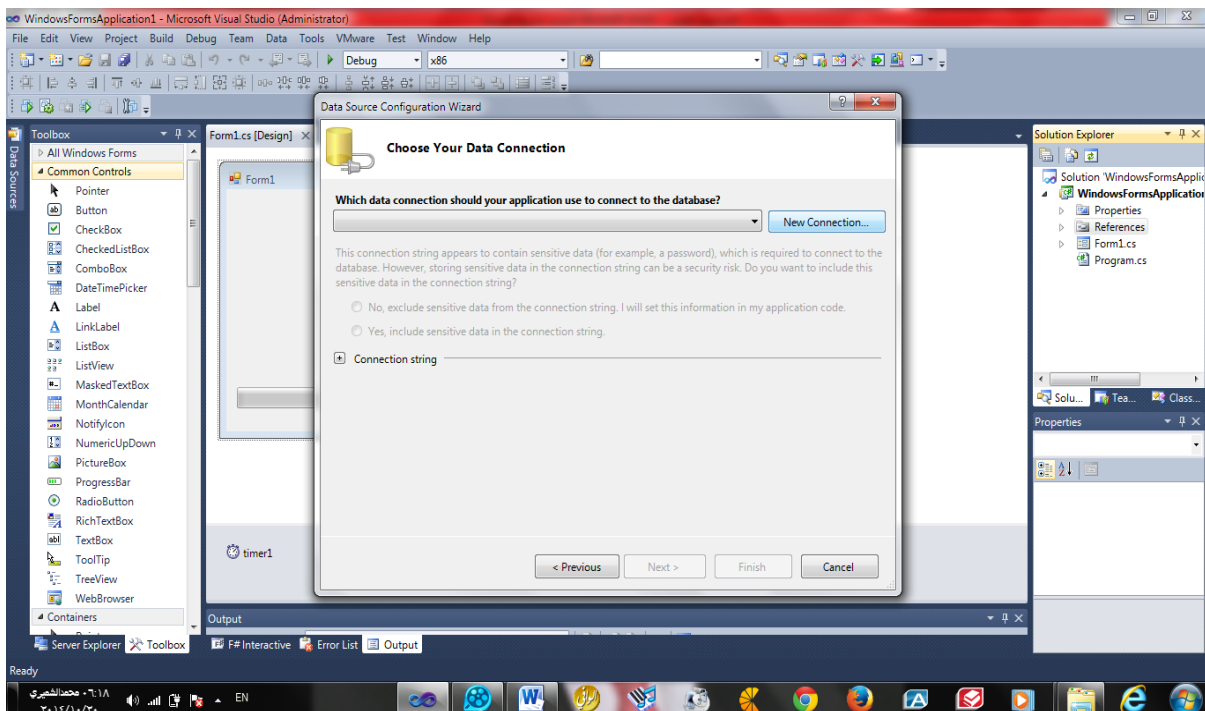
ثم نختار database ثم next



ثم نختار dataset ثم next



ثم نقوم بتحديد اتصال جديد من new connection



نقوم بتحديد نوع قاعدة البيانات الذي نريدها

Enter information to connect to the selected data source or click "Change" to choose a different data source and/or provider.

Data source:
Microsoft Access Database File (OLE DB) Change...

Database file name:
 Browse...

Log on to the database

User name: Admin

Password:

Save my password

Advanced...

Test Connection OK Cancel

ثم نحدد نوع قاعدة البيانات كما في الصورة

Change Data Source

Data source:

- Microsoft Access Database File
- Microsoft ODBC Data Source
- Microsoft SQL Server
- Microsoft SQL Server Compact 3.5
- Microsoft SQL Server Database File
- Oracle Database
- <other>

Description

Use this selection to connect to a Microsoft Access database file through the .NET Framework Data Provider for OLE DB.

Data provider:
.NET Framework Data Provider for OLE DB

Always use this selection

OK Cancel

ثم نحدد مسار قاعدة البيانات

Enter information to connect to the selected data source or click "Change" to choose a different data source and/or provider.

Data source:
Microsoft Access Database File (OLE DB) Change...

Database file name:
.programming\3level three\class2\ma\ms.accdb Browse...

Log on to the database

User name: Admin

Password:

Save my password

Advanced...

Test Connection OK Cancel

ثم نضغط next

Choose Your Data Connection

Which data connection should your application use to connect to the database?

Database1ConnectionString (Settings) New Connection...

This connection string appears to contain sensitive data (for example, a password), which is required to connect to the database. However, storing sensitive data in the connection string can be a security risk. Do you want to include this sensitive data in the connection string?

No, exclude sensitive data from the connection string. I will set this information in my application code.

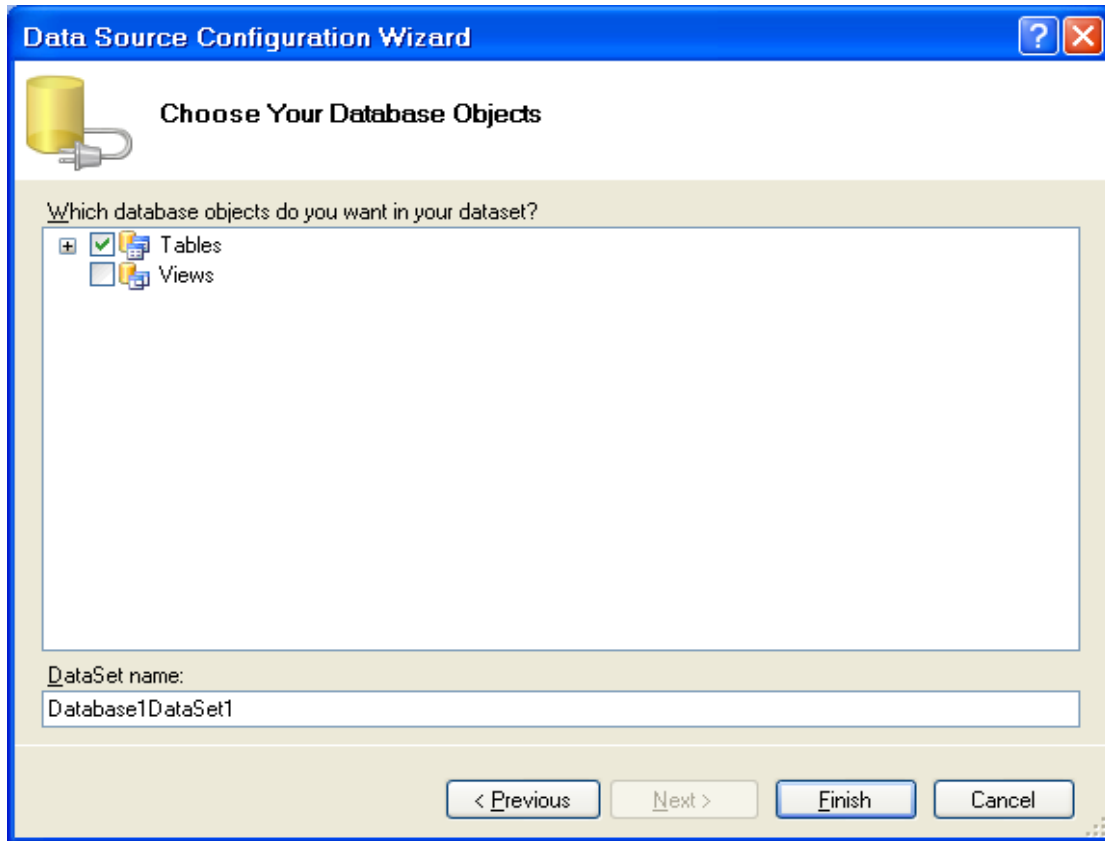
Yes, include sensitive data in the connection string.

Connection string

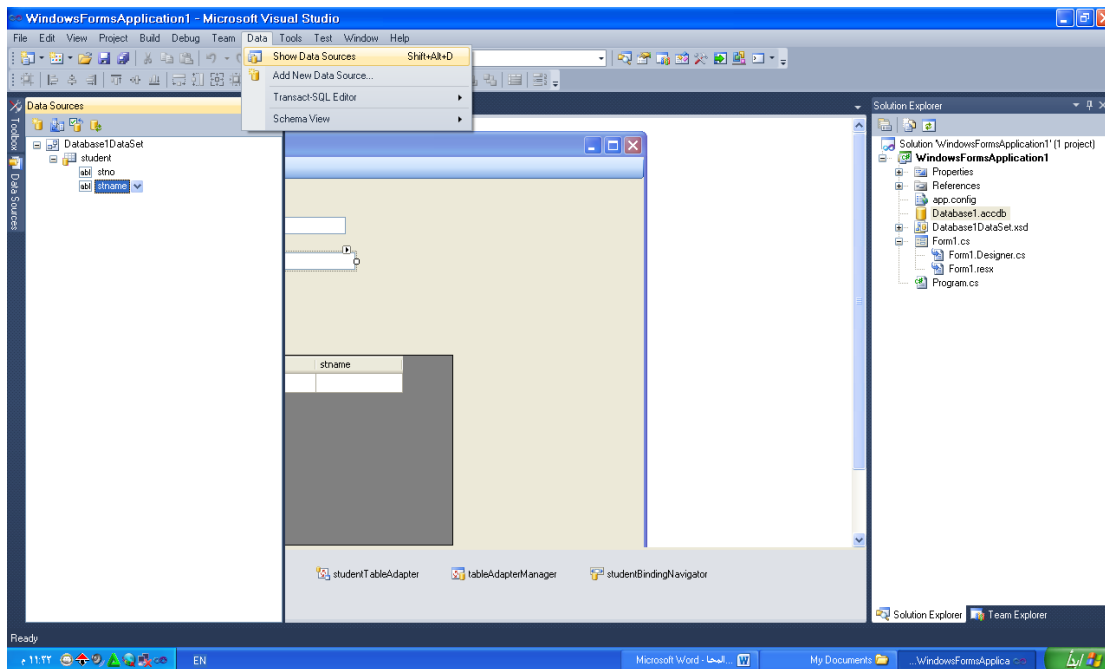
Provider=Microsoft.ACE.OLEDB.12.0;Data Source=|DataDirectory|\Database1.accdb

< Previous Next > Finish Cancel

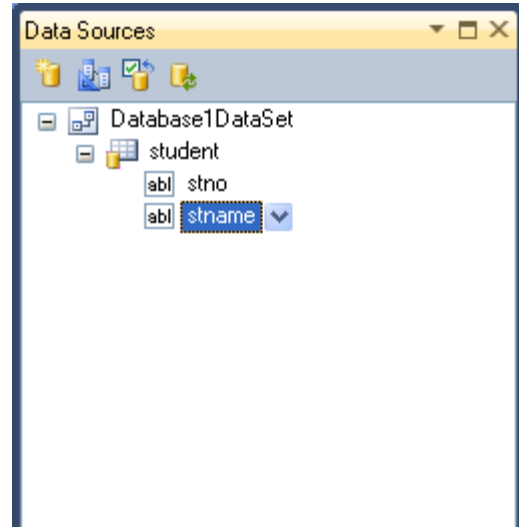
ثم نحدد الاشياء المراد استخدامها اما جداول او views



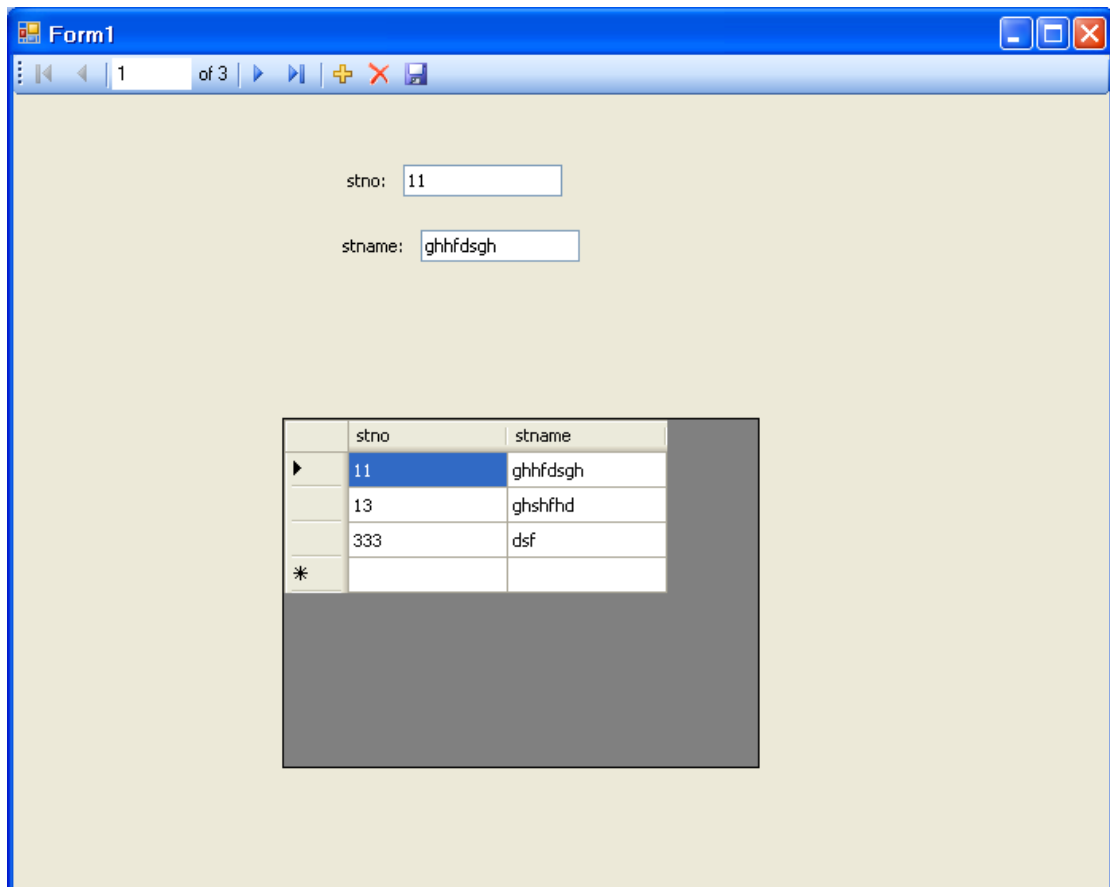
ثم نقوم باظهار قاعدة البيانات الذي اضفناها



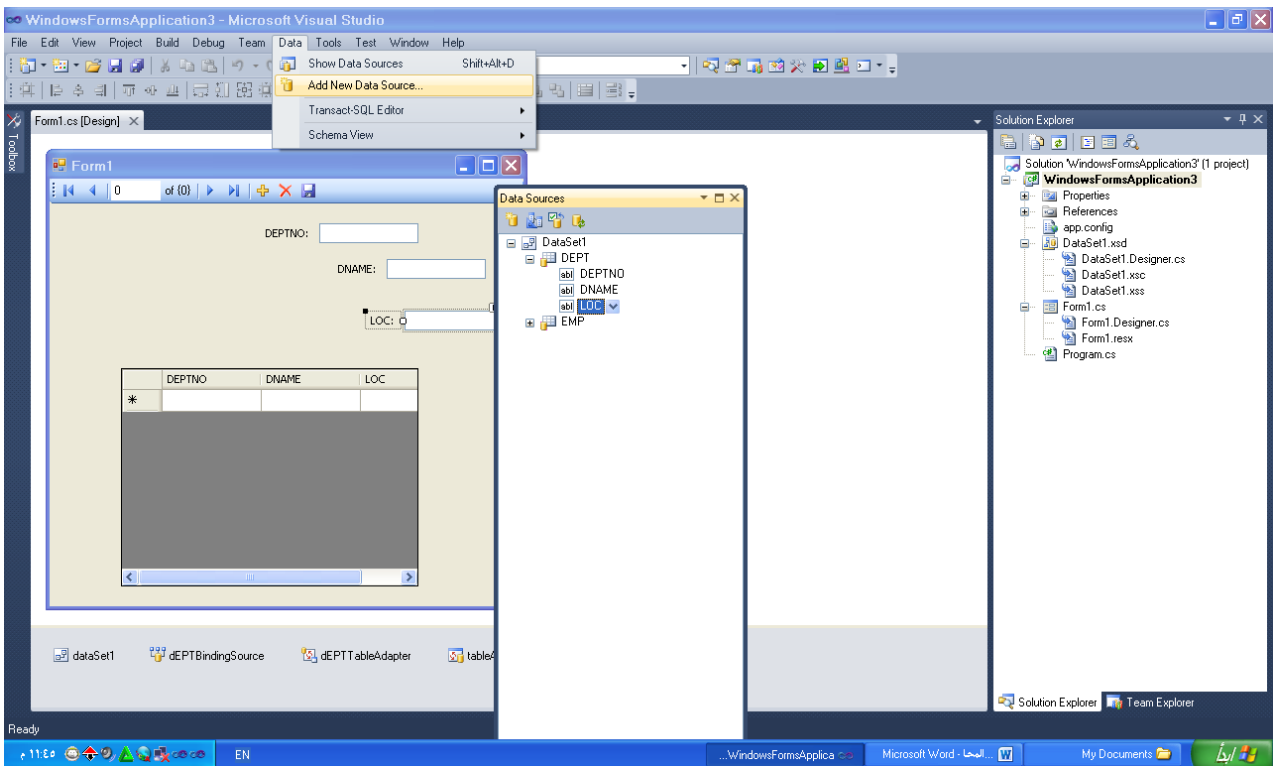
تظهر بالجانب الايسر للشاشة كما في الصورة

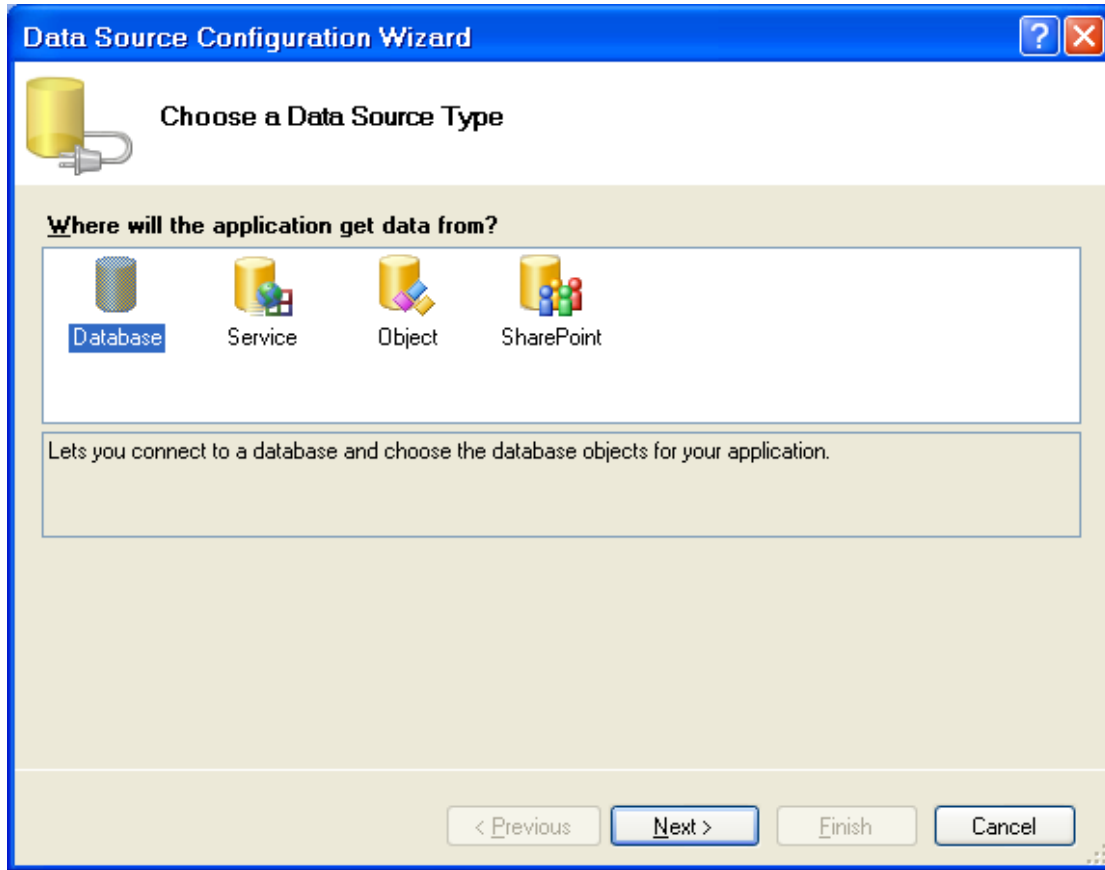


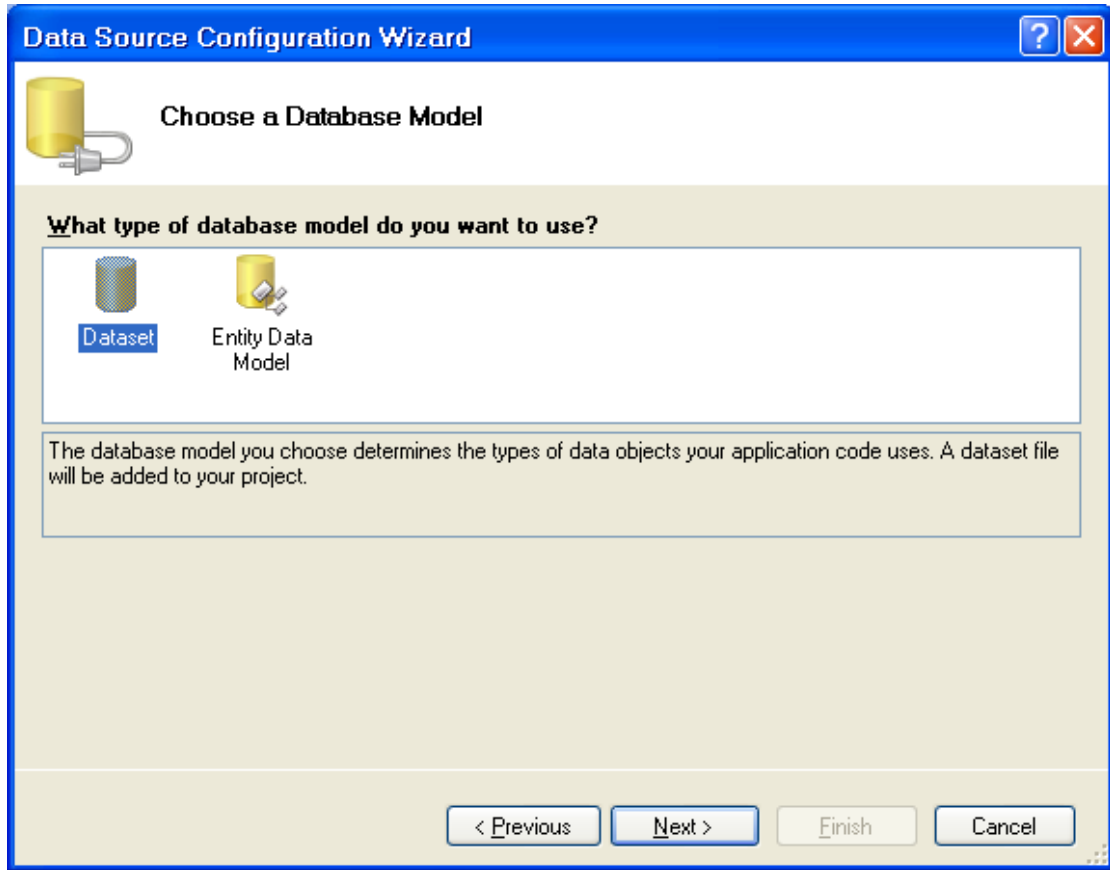
نسحب اسم الجدول الى الفورم :



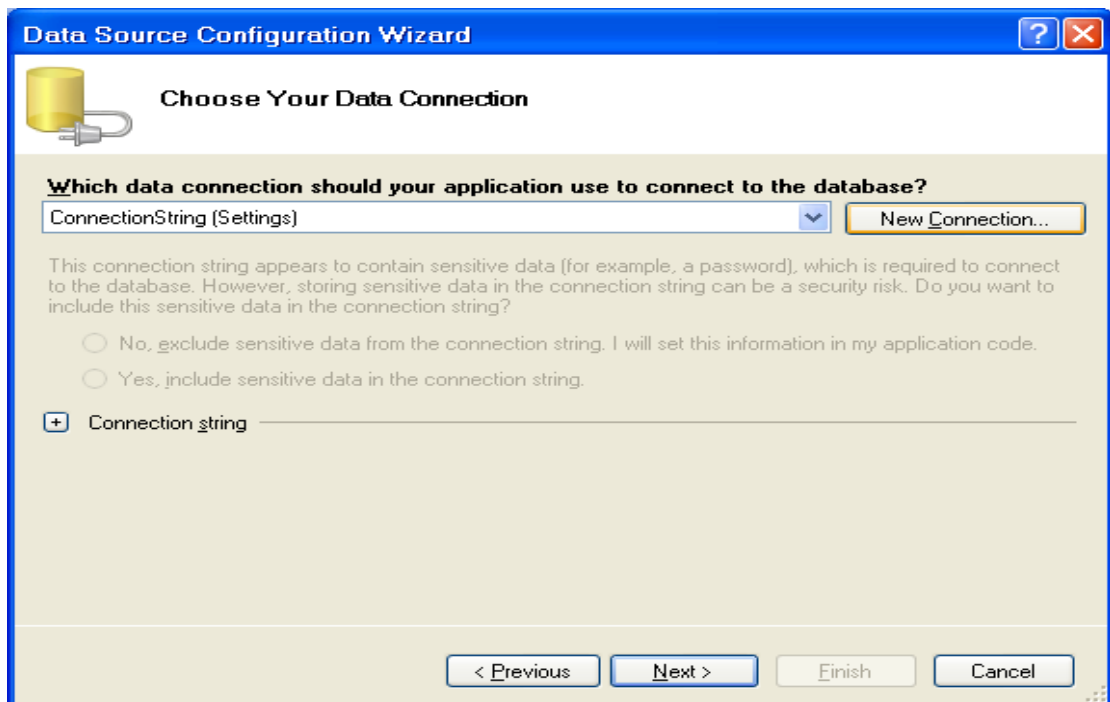
الاتصال بقاعدة البيانات Oracle

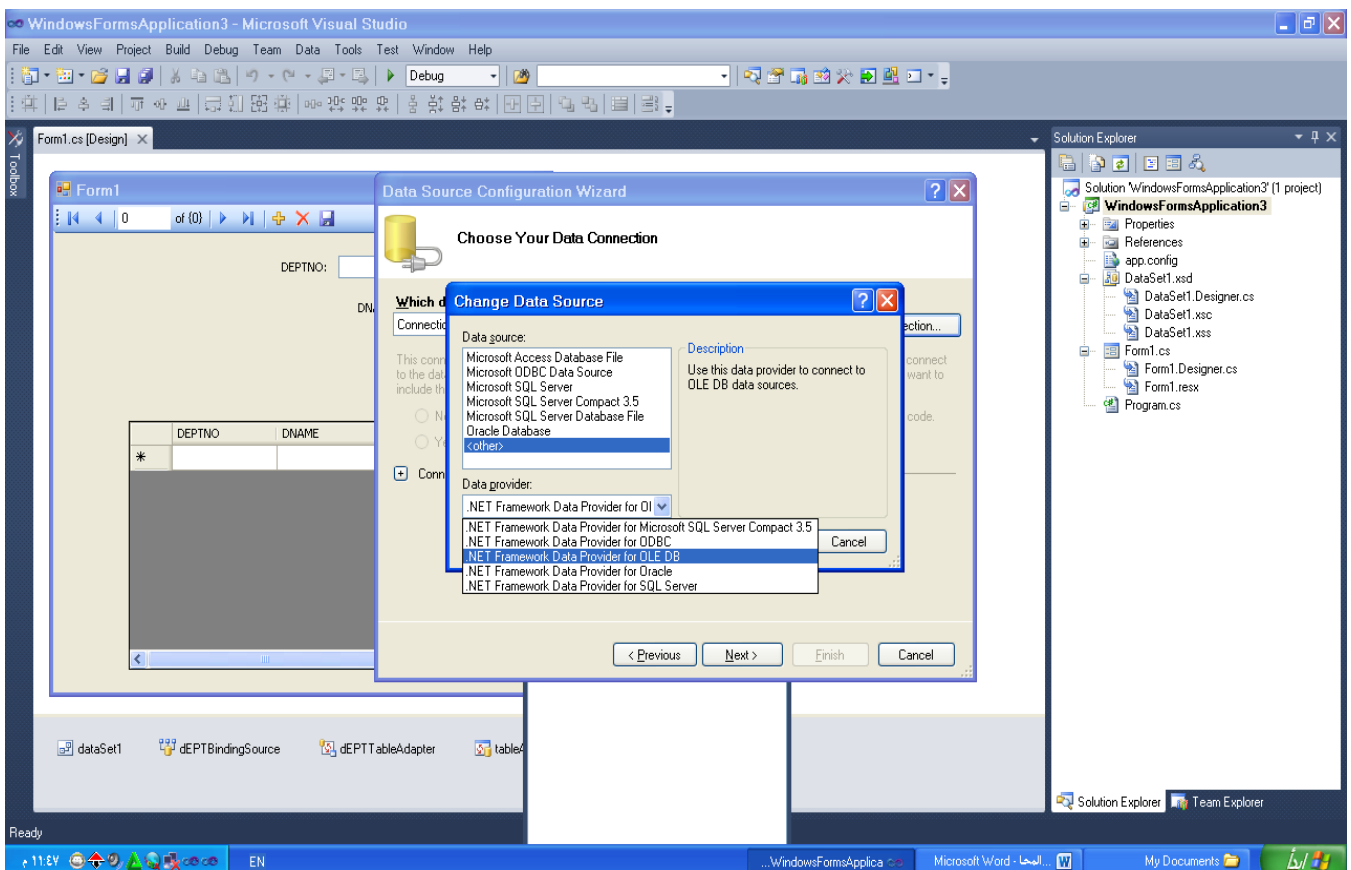
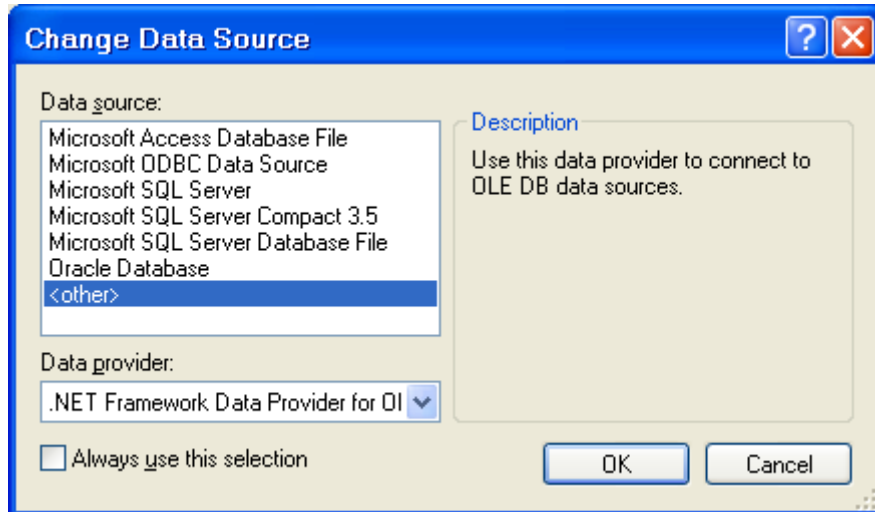


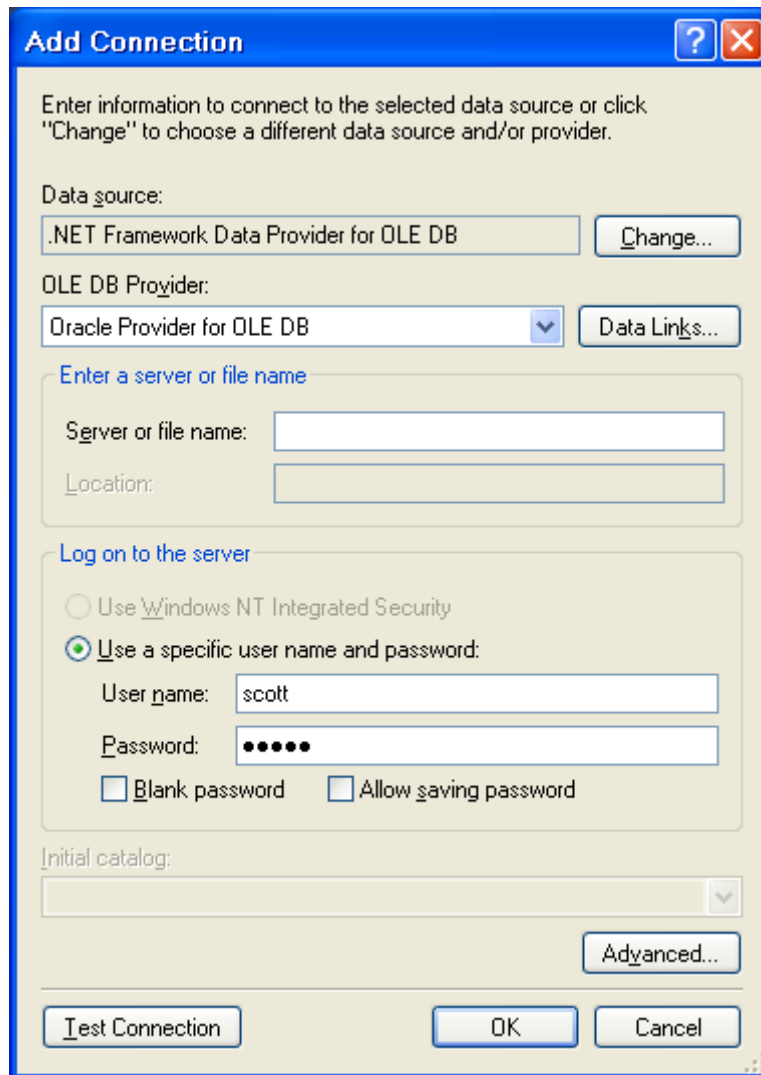




ننقر على New connection كما يلي :







Add Connection

Enter information to connect to the selected data source or click "Change" to choose a different data source and/or provider.

Data source:
[.NET Framework Data Provider for OLE DB] [Change...]

OLE DB Provider:
[Oracle Provider for OLE DB] [Data Links...]

Enter a server or file name

Server or file name: []
Location: []

Log on to the server

Use Windows NT Integrated Security
 Use a specific user name and password:

User name: [scott]
Password: [.....]

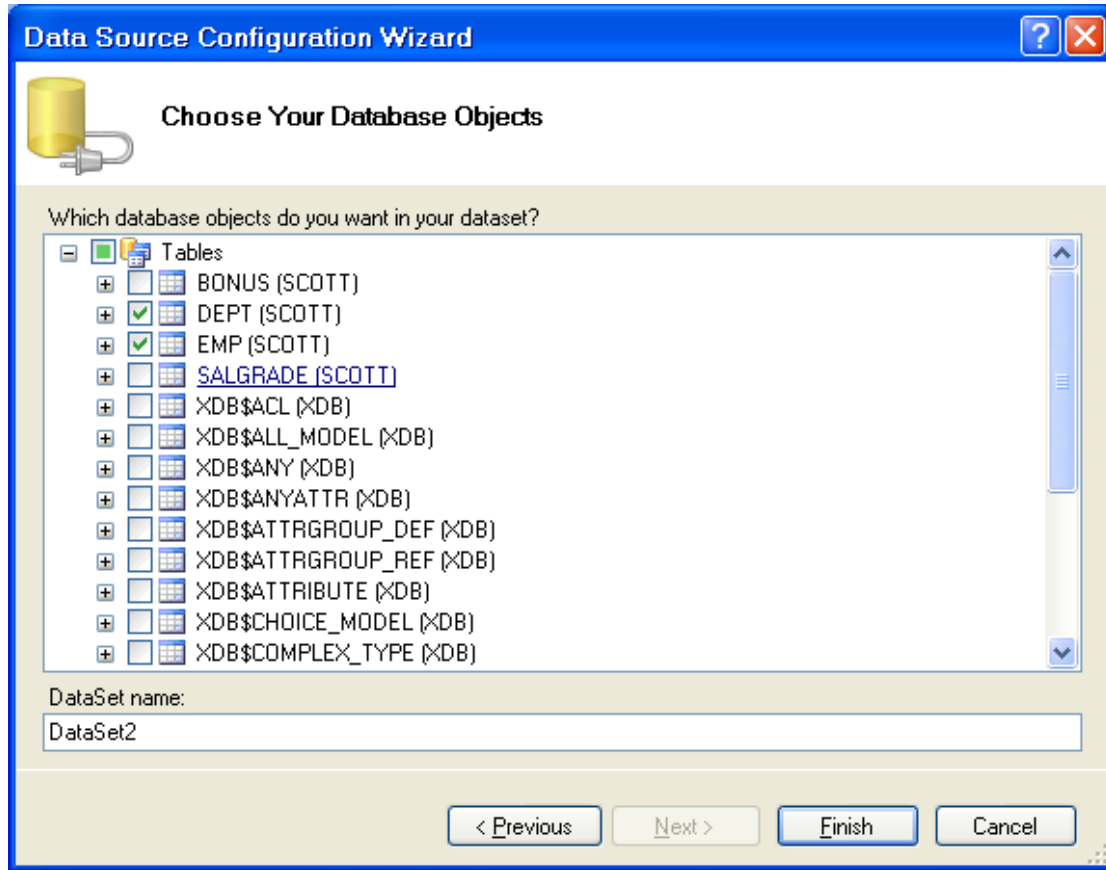
Blank password Allow saving password

Initial catalog: [] [Advanced...]

[Test Connection] [OK] [Cancel]

ننقر على test connection لفحص الاتصال





تم بحمد الله