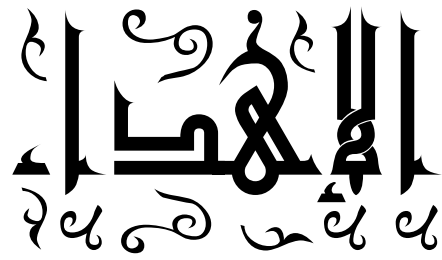
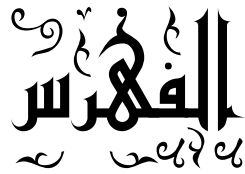


بِسْمِ اللَّهِ الرَّحْمَنِ الرَّحِيمِ

<http://www.alshater.net>

Support@alshater.net





5
7
10
15 unit
16
18 (Events)
20
24 Memo
27
29 Data Type
35
43
48 Dialog
52 MaskEdit
55
60
69
77
86 Database Desktop
100
111
117
118 SQL :
123
131 Access

137	ADO
140	
146	
147	
150	Windows Registry
154	Windows API
158	
167	
169	
182	
184	
183	
197	Install Shelled Express

المقدمة

:

2003

2006

:

– 1

1997

:

– 2

2

C#

2005

:

1997

98

2004

PHP

:

:(Visual Basic.Net)

..

:

..

.

.

!!

!! ..

)

!!

."

":(

..

-

Support@alshater.net

:

RAD (Rapid Application

Development)

)

(..

(

) Active X

IDE

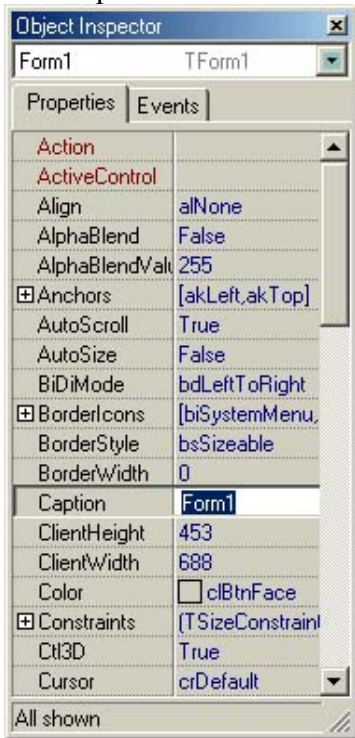
IDE (Delphi Integrated Development Environment).

: 1 :



(

)



Properties

Events.

Property
Events

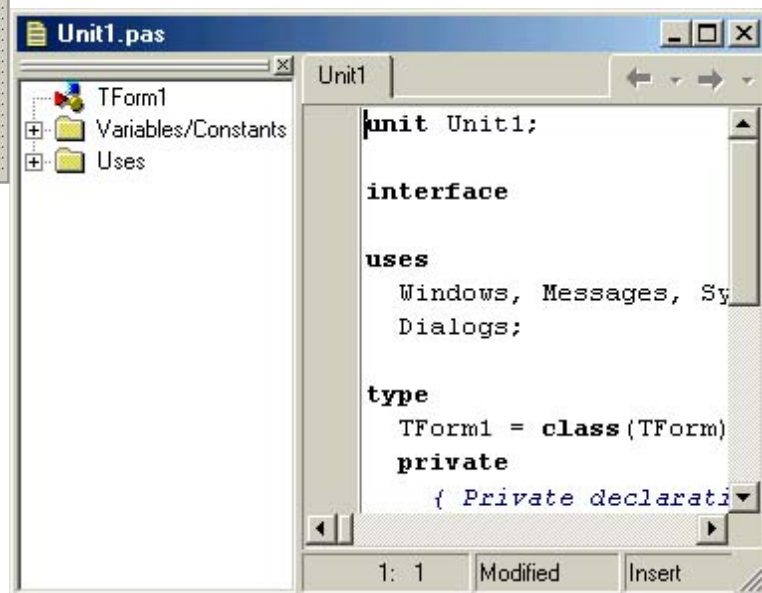
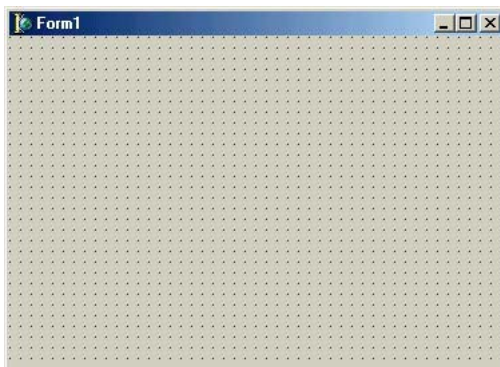
Event

()

Event Handler

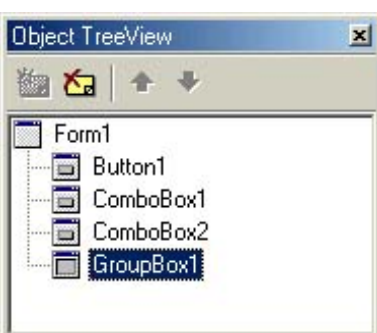
:

3



:

4



:

File

:

:

: File Menu 1

: New

: Application (1)

: CLX (2)

:Data Model (3)

: Form (4)

: Frame (5)

: Others (6)

(*.Pas) : Open

(*.dpr)

: Open Project

: Reopen

: Save

Unit : Save As

Main Program

: Save Project As

: Save All

: Close

: Close All

(Use) Use : Use Unit

: print

:

:

. File → New → Application

1

:

2

()	bdRightToLeft	BiDiMode
	280	Height
	350	Width
		Caption
()	poDesktopCenter	Position

Standard

(Button)

2

:

: **Button1**

	RedButton	Name
		Caption
()	160	Top
()	230	Left

Button2

	GreenButton	Name
		Caption
()	190	Top
()	203	Left

Button3

	CloseButton	Name
		Caption
()	200	Top
()	24	Left

```

:
1
form1.Color := clred ;
    clred    Color
.
:
2
form1.Color := clgreen;
:
3
close;

```



File → Save Project As
NewClosures
ChangeClosures
Run F9
Run
(Run → Run)

```

:
1
:
:
: ( Form1 )
+
: BorderIcons
: BiSystemMenu
: BiMinimize
: BiMaximize
: BiHelp
:
: BorderStyle

```

```

: bsDialog

. Bihelp      True

: bsNone

: bsSingle

: bsSizeable

×          : bsToolWindow  bsSizeToolWin

.

:

: Position

: poDesigned

: poDesktopCenter

)          : poScreenCenter

. (

...          : Icon

)

: (

C:\Program Files\Common Files\Borland Shared\Images\Icons

.

: 1

: ( Top, Left, Width, Height, Caption )

: BiDiMode

.

: Font

: Hint

True          : Showhint

Hint          RedButton

(

True          ShowHint

False          : Visible

False          : Enable

```

Tab

: TabOrder

Tab

.

1

	BtnAbout	Name
		Caption
()	0	Top
()	0	Left
	40	Width

: File → New → Form

:

	About	Name
	bdRightToLeft	BiDiMode
()		
	250	Height
	300	Width
		Caption
	poDesigned	Position

Save

aboutunit

Ctrl + s

File

(Form1)

. Form1

About

: Uses

implementation

:

implementation**uses** aboutunit ;

:

BtnAbout

about.Show;

.(

) About

Show

: About

: Standard () Panel 1

()	AlTop	Align
	" "	Caption
	185	Height
	bvLowered	BevelOuter
Align	Width	

: Button 2

	BtnClose	Name
		Caption
()	192	Top
()	112	Left

Panel Additional Image 3

)		picture
:		
C:\Program Files\Common Files\Borland Shared\Images\Splash\256Color		
Image	True	Stretch
()	0	Top
()	0	Left

: Panel Label 3

Label1

	Caption
24	Top
168	Left
	font

Label2

:	Caption
88	Top
212	Left
	Font



Close

BtnClose

```

Unit
:

unit Unit Name ;
interface
uses
  Windows, Messages, SysUtils, Variants, Classes, Graphics, Controls, Forms,
  Dialogs;
type
  TForm1 = class(TForm)
  private
    { Private declarations }
  public
    { Public declarations }
  end;
var
  Form1: TForm1;
implementation
end.

. ( NewColors ) Unit 1

: Interface

:
: Uses

)

. (

( ) TForm : Type
Type )

: Type ( AboutUnit NewColors
: Private
: Public

( )

.end; Type
Form1 TForm1 Form1 ( ) : Var
.

```

: implementation

.

:

.

:

: Standard

checkbox

1



: checkbox Button

checkbox1

" " : Caption

OnClick

Event

:

if checkbox1.Checked then button1.Visible := true else button1.Visible := false ;



True

checkbox

Checked

False

: Standard

ListBox

3



(Edit)

(ListBox)

(Button)

Items

"

"

"

"

:

Button

```
http://www.alshater.net
Listbox1.items.add (edit1.text);
(
)
:
listbox1.DeleteSelected ;
.
:
Listbox1.items.clear ;
.
```



: (RadioButtons)

4

```
form1.Color := clred;

form1.Color := clblue;

form1.Color := clcream;
```

True Checked

. ClCream

: GroupBox

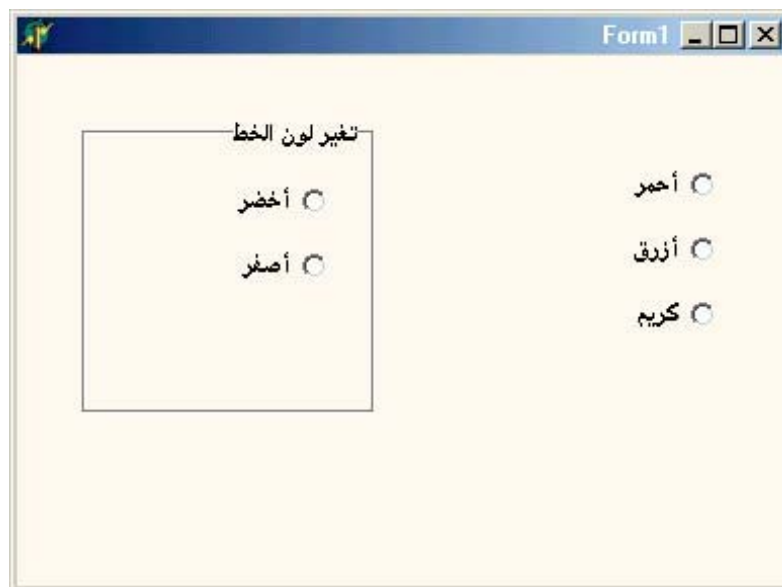
5

```
)

:

form1.Font.Color := clgreen;

form1.Font.Color := clyellow
```



: (Events)

OnClick

OnClick

) Button

(x,y)

: OnMouseMove 1

y = top

X = left

:

Label

Event

(Form1)

:

OnMouseMove

procedure TForm1.FormMouseMove(Sender: TObject; Shift: TShiftState; X,
Y: Integer);

:

End Begin

label1.Caption := inttostr(x);

label2.Caption := inttostr(y);

: OnMouseDown 2

(Form1)

:

:

OnMouseDown

Event

label1.Left := x;

label1.Top := y -10;

label2.Left := x+20;

label2.Top := y-10;

<http://www.alshater.net>

```

)
Label
. (
y X
: OnMouseLeave 5
OnMouseMove
Label
label3.font.color := clblue;
:
OnMouseLeave
Label3.font.color := clblack;
Label3
.
: On DblClick 4
Close; : On DblClick Label3
Label3
.

```

:

:

1

Shift

shift

Label

.

:

2

:

+ Ctrl

+ Ctrl + Shift

:

+ Shift

.

:

3

... Shift

Edit

Label

)

(Caption, Text

... Width, Height, left, top,

:

Alignment View

Alignment palette

: Edit

: Alignment palette



:



)



(



.(

)



)

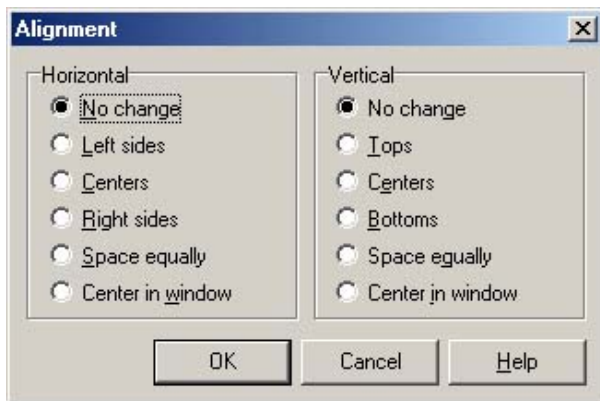


:

Edit

Align

: **Alignment**



:

Edit

Lock Controls

.

:

:

Paste

Edit

Copy

Cut

(

)

Application

Application

File → Options

Title setting

:
) ()
 (EXE
 Load Application Project → Options
) Icon
 C:\Program Files\Common Files\Borland Shared\Images\Icons

: ShowMessage

showmessage (S : string)

Ok



Button

showmessage('');

: MessageDlg

Yes

NO

Function **MessageDlg**(const **Msg**: string ; **DlgType**: TMsgDlgType; **Buttons**: TMsgDlgButtons ; **HelpCtx**: Longint): Word

: Msg

: Dlgtype

: mtWarning

: mtError

: mtInformation

: mtConfirmation

: mtCustom

.....

: Buttons

:

mbYes,mbNo,mbOK,mbCancel,mbAbort,mbRetry,mbIgnore,mbAll,mbNoToAll,mbYesToAll,mbHelp

[]

.(* .HLP) :HelpCtx

mbOK	mrOk
mbCancel	mrCancel
mbYes	mrYes
mbNo	mrNo
mbAbort	mrAbort
mbRetry	mrRetry
mbIgnore	mrIgnore
mbAll	mrAll
	mrNoToAll
mbNoToAll	
mbYesToAll	mrYesToAll

mrok

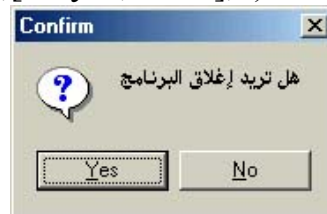
OK

:

: (1)

Button

if MessageDlg(' ',mtConfirmation
,[mbyes,mbno],0)= mryes then close;



. Yes

No Yes

: 2

messagedlg(' ',mterror,[mball,mbyestoall,mbNoToAll,mbIgnore],0) ;

: **InputBox** 3

: Cancel Ok Edit

InputBox(const ACaption, APrompt, ADefault: string): string ;

: ACaption

: APrompt

: ADefault

. Edit



form1.Caption := inputbox(' ', ' ');

: **Memo**

(256)

Lines

:

True

: **WordWrap**

.

Tab

6

True

: **WantTabs**

Enter

True

: **Wantreturns**

. False

True

: **ReadOnly**

:

: **Alignment**

)

: **taRightJustify**

(bdRightToLeft BiDiMode

)

: **taLeftJustify**

(bdRightToLeft BiDiMode

.

: **taCenter**

Button

Memo

:

" " Caption

:

Memo1.Lines.SaveToFile('c:\a.txt');

)

()

. (a.txt

:

" " Caption

Memo1.lines.LoadFromFile('c:\a.txt');

.

()

: Bitbtn

:

. (Caption)

1

:

2

. Kind

)

Glyph

C:\Program Files\Common Files\Borland Shared\Images\Buttons

Glyph

3 NumGlyph



:

False

Enabeled

.

: SpeedButton

:

BitBtn

: Flat 1

: GroupIndex 2

:

Glyph

Speedbutton

1 GroupIndex

.

: (MDI SDI)

SDI

:

: MDI

:

FormStyle

		FormStyle
	SDI	fsNormal
	()	fsMDIForm
		fsMDIChild
		fsStayOnTop

:

MDI

. fsMDIForm Form1 Formstyle 1

. fsMDIChild Formstyle 2

3

```
fsStayOnTop  
    )  
    . (  
Form1  
Formstyle  
: fsStayOnTop
```

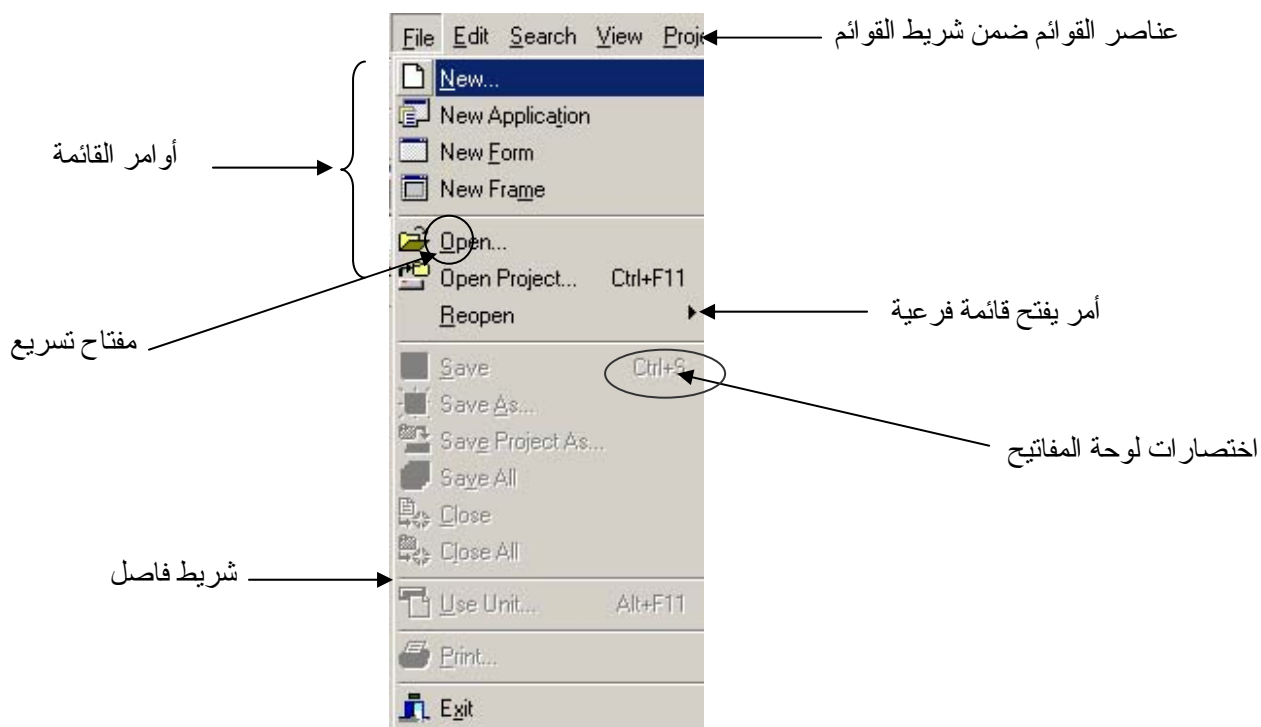
:

. (Popup Menu)

(Main Menu)

:

: (Main Menu)



:

Standered

MainMenu

1

:

(Menu Designr)

2

Items

Menu Item)

Menu Designr

Caption

(

: (&)

Caption

3

. Caption

&

. (&)

Caption

4

. (&) Caption

5

.

–

Caption

6

	.	&	Caption	7
	.	& Caption		8
Ctrl + c	Shortcut	Caption		9
	.			
.	Ctrl + X	Shortcut	Caption	10
.	Ctrl + V	Shortcut	Caption	11
		:		
		Caption		12
:		Create SubMenu		
		.		
		:		
		Delete		1
			Delete	
Insert				2
		.		
)			3
		.		
		(
mbBreak	Break			4
			mbBarBreak	
			mbNone	
		:		
				5
	.	Event	OnClick	
	MDI			6
		.		
		:	(Popup Menu)	
	.	Main Menu		
			:	
.	Panel	PopUpMenu		
		:		
	.			
		:		
	.			

```

:
Showmessage ( "you click the first button" );
:
Showmessage ( "you click over the second button " );
:
Showmessage ("you click over the third button")
:
Showmessage ("you click over the fifth button" )
    . PopUpMenu1                                PopUpMenu
    .PopUpMenu2                                Panel      PopUpMenu
    . Panel

```

: (Comments)

```

.
:
. { } 1
. (* *) 2
. // 3

```

```

:
Editor Font      Display      Property Editors      properties
... Ok      Courier New ( Arabic)

```

:Data Types

(Object Pascal)

(2147483648-)	(2147483647)	Integer
(127) (128-)	(2)	Shortint
(32767) (32768-)		Smallint

(-2147483648)	Longint
(2147483647)	
(225) (0)	Byte
(65535) (0)	Word
(0)	Cardinal
(2147483647)	
$2 \times 10^{63} - 1$) (-2×10^{63})	Int64
(

(8) (7)	Single
3.4×10^{38} 1.5×10^{-45}	
(12) (11)	Real
1.7×10^{38} 2.9×10^{-39}	
Double Extended	
(16) (15)	Double
1.7×10^{308} 5.0×10^{-324}	
(20) (19)	Extended
1.1×10^{4932} 3.4×10^{-4932}	
(20) (19)	Currency
922337203685477 -922337203685477.5808	
(20) (19)	Comp
9.2×10^{18} -9.2×10^{18}	

:

False	True		Boolean
	C	Boolean	ByteBool
	C	Boolean	Wordbool
	C	Boolean	Longbool

:

		. Character	AnsiChar
) Unicode	Windows 2000,Xp		WideChar
. 16	()	
WideChar	Windows 98,Me	AnsiChar	Char
		. Windows 2000,Xp	

:

2	4		AnsiString
	. (0) 1	
2	256		Sortstring
	(0) 256	
4	Unicode		WideString
. (0) 1	2	
AnsiString	Shortstring	WideString	String
	{ \$H- }	implementation	

. (Null)

Null	PAnsiChar
AnsiChar	
Null	PWideChar
WideChar	
Char	Pchar

	Pointer
--	----------------

()

	Variant
--	----------------

:

: Boolean 1

Edit Button

```

var a:Boolean;
i,j:integer;
begin
i:=strtoint(edit1.text);
j:= strtoint(edit2.text);
a:= i>j;
if a then showmessage (' ' ) else showmessage (' ')
('

```

: Shortstring 2

: Edit Label

```

var a:shortstring;
begin
a:=edit1.text;
form1.Caption := inttostr(word(a[0]));
if word(a[0]) >= 4 then
label1.Caption := a[3]+a[4];

```

65 Word('A') Word

```

: String      2

S      Length('s')

:

:      Edit      label

var a:string;
begin
a:=edit1.text;
label1.Caption := inttostr(length(A);
label2.Caption :=inttostr(length('asdfgh');

: Pchar      3

Var P:pchar;      : Pchar      P
'Hello      ;Form1.Caption := p      :      Begin
p:= All.....'

:

s: string;
begin
s:= 'HELLO ALL.....'#0      ;
p:= @s[1];
form1.Caption := p;

. Null      s      Null      #0
. s      @

: Variant (      )      4

:

var v1,v2,v3 :variant;
begin
v1:= 5;
v2:= 20;
v3 := v1+v2      ;
form1.Caption := v3;

: EvariantError

v1:= 5;
v2:= 'asd';
v3 := v1+v2      ;

:

v1:= 5;
v2:= '123';
v3 := v1+v2      ;

```

```

                                : Variant
compiler
                                interpreted
.
                                :
                                Interface
                                private
.
                                . Public
                                :
                                : Private
private
    I :integer;
                                : Public
public
    x:integer;
                                : OnCreate
I := 4 ; X := 24;
                                OnCreate
                                ) X,I
procedure TForm1.FormCreate
                                . (
                                :
form2.Show ;
    . ( Uses
                                :
Form2.Caption := inttostr ( Form1.X) ;
                                X
Implementation Var

```

```

Implementation Var
Y: string = 'abcd'; F : double = 55;

: Const

:
Implementation Type
Implementation
Const
    pi=3.14;
    pi2=22/7;
    programmer = 'Khaled';

Const
    Pi :Real = 3.14;
    pi2:single =22/7;
    programmer :string= 'Khaled';

function procedure : routine
.
result
parameters
:
( )
:
procedure Hello;
begin
    ShowMessage (' ');
end;

function Double (Value: Integer) : Integer;
begin
    Double := Value * 2;
end;

```

Implementation

:

Hello

:

Form1.caption := inttostr(Double(6));

:

1

```
Procedure ProcedureName ( var1,var2,var3: anytype ;
var4,var5:any type) ;
```

Begin

...

...

end;

:

Procedure Add(x,y : integer) ;

Begin

Y:= x+y ;

End;

:

Label

var i,j:integer;

begin

i:=1;j:=2;

add(i,j);

label1.Caption := inttostr(i);

label2.Caption := inttostr(j);

.

y x

Add

:

()

2

```
Procedure ProcedureName ( var1,var2,var3: anytype ;var
var4,var5:any type) ;
```

Begin

...

...

end;

:

Add

procedure add(x:integer;var y:integer);

begin

y:= x+y;

end;

. j

y

y

x

Add

:

Add (Add(1,j) Add
Add(1,2) I,2)
.

.()

: 3

```
Procedure ProcedureName ( const var1,var2,var3: anytype ;
var4,var5:any type) ;
Begin
...
...
end;
```

Const

: Add

```
procedure add(const x:integer;var y:integer);
begin
y:= x+y;
end;
```

```
procedure add(const x:integer;const y:integer);
begin
y:= x+y;
end;
```

Left side cannot be assigned to:

Y

: 5

:

```
Procedure ProcedureName(var1,var2,var3: anytype ; var4:
anytype = Value ; var5:anytype= value) ;
Begin
...
...
end;
```

Add :

```

procedure add(var x:integer;var y:integer=5);
begin
x:= x+y;
end;

```

: Add

Add (I,j) or Add(I)

.

:

: overload

4

.

Label :

```

procedure change( i :integer; var s :string) ; overload;
begin
s:=inttostr(i);
end;
procedure change( i:tdatetime; var s :string) ; overload;
begin
s:= datetostr(i)
end;
procedure change( i:tdatetime; var s1,s2 :string) ;
overload;
begin
S1:= datetostr(i);
S2 := datetostr( i+1);
end;

```

:

```

Var a:string ;
begin
change ( 5,a) ;
Label1.Caption := a ; end;

```

:

```

Var B:String ; begin
Change ( date,b);
Label2.Caption := b; End;

```

:

```

Var A,B:string; begin

```

Change (date,a,b);

Label1.Caption := A; Label2.Caption := B; end;

: Result 6

: Result

: Add

Function add(x,y:integer) : integer; Begin Add := x+y; End;	Function add(x,y:integer) : integer; Begin result := x+y; End;
--	---

:

. Interface

: Var Interface 1

Procedure Add(x,y : integer) ;

: Implementation (Begin... end)

Procedure Add(x,y : integer) ;

Begin

Y:= x+y ;

End;

. Type 2

Private Type :

Procedure Add(x,y : integer) ;

: Implementation Add

Procedure TForm1.Add(x,y : integer) ;

Begin

Y:= x+y ;

End;

: Form1 Add

Form1.add (x,y) ;

```

:
Procedure procedureName ( var parameter1 : array of anytype
; par2,par3:anytype );
Begin
.....
.....
end;

( )

:

Function add( a:array of integer): string ;
var h,i,s : integer;
begin
s:=0;
h := high(a);
for i:= 0 to h do s:= s + a[i];
result:= inttostr(s);
end;

) High
3 [2..3] 3 [0..3]
. 88 [22..88]

:
form1.Caption := add([1,3,4,89])

A[0] :
. Add )

: ProgressBar

Setup )

(
:

: Timer Win32 Progress Bar
: OnTimer 100 Interval
if progressbar1.Position < 100 then
progressbar1.Position := progressbar1.Position+1;
: ProgressBar
Min ProgressBar : Position 1
. Max

```

```

        . Position          : Min    2
        . Position          : Max    3
        :                   : Step   4
        progressbar1.Position := progressbar1.Position+1;
        .                   True     : Smooth  5
        ProgressBar      pbVertical      : orientation  6
    (    100      ProgressBar      Height
                                )
                                : TrackBar:

1000      Max      Win32      TrackBar      :
                                1      Min
                                Onchange
                                timer1.Interval := trackbar1.Position ;
trackbar1      Interval
                                :      ontimer
                                if progressbar1.Position < 100 then
progressbar1.Position := progressbar1.Position+1
                                else progressbar1.Position := 0;
        .
                                :
                                :
                                :
        ( For ,Repeat ,While )
        progressbar      :
                                :
var i :integer;
begin
for i := 0 to 100 do
progressbar1.Position := i
    )      (
                                :
var i,j :integer;
begin
for i := 0 to 100 do begin
for j := 0 to 90000 do ;

```

<http://www.alshater.net>

```
progressbar1.Position := i
end;
```

```
for j := 0 to 10000 do ;
```

```
.
```

```
:
```

```
Form1.color := clred;
```

```
( )
```

```
.
```

```
progressbar
```

```
For j := 0 to 90000000 do
Application.ProcessMessages ;
)
.(
```

:

:

Uses

Math

x	Abs(x)
e^x	Exp(x)
Floor (2.8) = 2; : X Floor(-2.8) = -3	Floor(x)
Frac(234.987)= 0.987: X	Frac(x)
Int(234.987)= 234	Int(x)
x^y intpower(2,3)=8;intpower(2,2)=4	IntPower(X,y)
). X True (Isinfinite(X)
$x*2^y$	LdExp(x,y)
Len(e) = 1 : X	Ln(x)
Log10(10) = 1 : X	Log10(X)
Y X	LogN(Y,X)
Max(3,6) = 6 :	Max(X,Y)
Min(3,6) = 3:	Min (X,Y)
3.14159265358932358	Pi
$Y[0]*X^0+Y[1]*X^1+....+Y[n]*X^n$	Poly (x,y:array of double)
x^y	Power (X,Y)
Round (1.5) = : X 2;Round(1.4)=1;Round(1.6) =2	Round (X)
X=0 0 X -1 X 1	Sing(X)
x^2	Sqr(x)
\sqrt{x}	Sqrt(x)
Trunc(5.022) = : X	Trunc(x)

5;Trunc(5.999)=5

:

: Isinfinite(X) 1

:

var v: variant;

x:double;

begin

x:=1/0;

v:= isinfinite(x);

if v then

form1.Caption := 'true';

. Integer

X

1/0

X

: Poly (x,y:array of double) 2

:

var v: variant;

begin

v:= poly (4,[2,3,4,5]);

form1.Caption := v;

:

2

:

Integer ('A') = 65; Integer ('a') = 97;

Char (97) = 'a'; Char (48) = '0'; char (65)= 'A';

Boolean(0) = false; Boolean (1) = true;

:

:

int64	Strtoint	Strtoint64
:	X	Floattostr(X)
Floattostr(5.5e3)='5500';Floattostr(5.5)='5.5'		
.(X	FloattostrF(x,,,,)
Strtfloat(3.3)= 3.3; :	S	Strtfloat(s)
Strtfloat(3.3e4)=33000		
.	S	Strtocurr(S)
y	X	Inttohex(X,y)
	:	

```

:
function FloatToStrF(Value: Extended; Format:
TFloatFormat ; Precision, Digits: Integer):string ;
Value 1
: Format
: (1)
Format = FFGeneral 1
Value
Precision
Digits
:
form1.caption := floattostrf(55.2723e+3, ffgeneral,5,2);
5 Precision 55272
4 55272.3 7 5
. 527e4 :
Format = FFExponent 2
(ddd.edd)
. 0..4 Digits Precision
form1.caption := floattostrf(52.34, ffexponent,8,3);
: 2 3 4 8 5.2340000e+001
5.234E+01
Format = fffixed 3
: Digits
form1.caption := floattostrf(100.36, fffixed,6,1);
. 100.4
Precision
Format = ffNumber 4
.
form1.caption := floattostrf(195784430.36, ffnumber,10,5);
. 195,784,430.4000

```

```

: Format = ffcurrency 5
)
. (
form1.caption := floattostf(195784430.36, ffcurrency,10,5);
195,784,430.4000
: Inttohex(X,Y)
2345 929 inttohex(2345,1); :
J:=$F I:=2345 I:= $929 ) ... Integer ( J=15
:
:
F1
(Floattostf Format )
:
:
Currency
Strtofloat
See Also Strtofloat F1
) Category ( Strtocurr )
( Floating point Conversion Routines
) Strtofloat
. (
:
:
Math ( )
F1 ( Power ) math )
Power
.( math
. Sysutil ( ..... Strtoint )

```

Help → (())
Delphi help
Find) Find
(
(Sin)
(Sin)

Help Other Standard routine)
(topic
:

. F1
.... F1

: Dialog

) Dialogs

: (....

: OpenFileDialog



(Open)

FileName

:

Memo

:

Opendialog

:

IF Opendialog1.Execute then

memo1.Lines.LoadFromFile(opendialog1.FileName) ;

open (TXT)

.

True

OpenDialog1.Execute

(Open)

False

opendialog1.FileName

(Cancel)

.

opendialog1.FileName

Filter

: Filter

Filter

...

*.txt

Filter

Name

Txt

Filter

"

" Files Type

"

"*.Bat " Filter

"

" Filter Name

. " * . * " "

```

        . Files Type
1          : FilterIndex
          .... 2
          : InitialDir
          ... C:\          C:\
          : Title
          " "
          : Option
          .
          : SaveDialog
          .
          :
          " " Caption          SaveDialog
          :          SaveDialog
          *.txt ..... : Filter          1
          *.bat ..... :
          : .Txt : Defaulttext          2
          :
if savedialog1.Execute then
memor1.Lines.SaveToFile(savedialog1.FileName )
....
OfOverwritePrompt          Option
          .
          Ture
          : OpenFileDialog
          .
          Filter
          :
          . OpenFileDialog          Image
          :
if OpenFileDialog1.Execute then
image1.Picture.LoadFromFile(OpenPictureDialog1.FileName )

```

```

        . Image           Open
        *.jpg             Filter      Jpg           :
                           . Uses      Jpeg
                           : SavePictureDialog
(           ) .....
                           .....
                           :
SavePictureDialog         SavePictureDialog

        :                 .Bmp      DefaultExt
if SavePictureDialog1.Execute then
image1.Picture.SaveToFile(SavePictureDialog1.FileName)
        )
        . (Save As Type

                           : FontDialog

        .

        FontDialog        Label

        :

if FontDialog1.Execute then
label1.Font := fontDialog1.Font ;

                           : ColorDialog

        .

        :                 ColorDialog
if colorDialog1.Execute then
form1.Color := colordialog1.Color ;
        Define Custom colors           ColorDialog
        .           RGB
        Dialog           :
        Xp               98

```

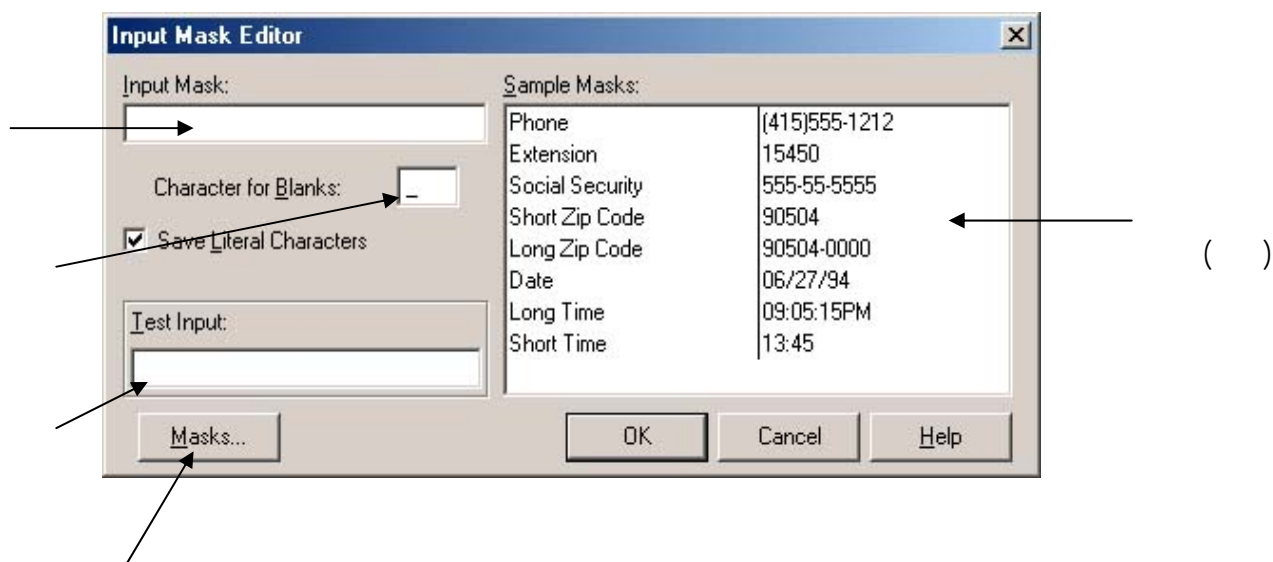
.

(Additional) : MaskEdit

Edit

Editmask

• • •



:

Editmask

Additional

MaskEdit

1

Ok

Date (Sample Masks)

_____ / _____ / _____

•

•

... L 9 0

)

: 9

• • • •

99999

(

00000

)

$$: 0$$
$$(\dots$$

•

LLL

)

: L

.(

• • • • •

: I

..... : a

. ... : A

.....

(Win32) : MonthCalendar

...

: OnCreate

MonthCalendar1.Date := date;

:

form1.Caption := datetostr(MonthCalendar1.Date);

.. () alClient Align

. Calendar Sample :

(Win32) : DateTimePicker

: ()

dtkDate Kind 1

MonthCalendar

dmUpDown DateMode

....

Timer dtkTime Kind 2

: OnTimer

DateTimePicker1.Time := time;

: 3

Form1.Caption := TimeToStr(DateTimePicker1.Time);

:

Form1.Caption := Datetostr(DateTimePicker1.date);

(Win32) : PageControl

:

:

Win32 PageControl

TabSheet1 New Page

. TabSheet3 TabSheet2

```

" " Caption Tabsheet1
. MonthCalendar
" " Caption TabSheet2
... dtkTime Kind DateTimePicker
" " Caption TabSheet3
.... dtkTime Kind DateTimePicker
..
ESC ) PageControl
. alClient Align (
Add Win32 ImageList
PageControl Ok
ImageList1 Images
... ImageIndex tabSheet
TapPosition
PageControl Style
tpTop TapPosition ) tsFlatButtons tsButtons
. (
. ActivePage
True : HotTrack
. ( )
( Win32 ) : TabControl
PageControl
)
:
. 5 :
1,2,3,4,5,6,7,8,9 Tabs TabControl
. TabControl Label
: OnChange
var i :integer;
begin

```

```
http://www.alshater.net
i := strtoint(tabcontrol1.Tabs[tabcontrol1.tabindex] );
label1.Caption := inttostr(i) + ' * 5 = ';
label2.Caption := inttostr(i * 5);
```

TabControl1.TabIndex

. []

Tabcontrol1.Tabs[]

...

.

(Win32) : UpDown

UpDown1

Edit

UpDown

Edit

UpDown

Edit1

Associate

. Edit

Increment

. Edit

Max Min

.

Position

. ()

Orientation

True

: Warp

. Up

Down

SpinButton

SpinEdit

Sample

:

.

:

: Concat

1

Concat (s1, [s2..sn]) :string

S1..Sn

:

:

var s1,s2,s3 : string;

begin

s1:= 'abc';

s2 := 'efg';

s3:= 'hij';

form1.caption:=concat(s1,s2,s3)

Form1.Caption := s1+s2+s3;

: Copy

2

Copy (S:string , Index,Count :Integer) :String

. Count

Index

S

... Copy ('Hello All',5,1) = o ; Copy ('Hello All',2,6) = ello A :

: Delete 3

Delete (Var S:string ,Index,Count) ;

Index

S

Count

:

:

var s1 : String;

Begin

s1:= 'Hello All' ;

Delete (s1,1,3);

Form1.Caption := s1;

Delete (S1,4,3)

lo All

. HelAll

: DupeString 4

DupeString (S: String ,Count :Integer) :String;

Count S

DupeString('Ha ',5) = Ha Ha Ha Ha Ha :

StrUtils

: Insert 5

Insert (S1:String , var S:string ; Index :Integer) ;

. S

S

Index

S

S1

:

:

var s : string;

begin

s:= 'Hello Friends' ;

insert ('All ' ,s,7);

form1.Caption := s;

: StuffString

StuffString(s:string , start, length :integer , S1:string) :string;

Start

S

S1

: Length S

stuffstring('Hello Friend',7,6,'all') = 'Hello all' :

. Insert

0 6

all

:

StuffString**S****Insert**

2

. (

StrUtils

: LeftStr

LeftStr(S:String ,Count : integer) :string

: Count S

. LeftStr('Good Morning,4) = Good LeftStr('Hello Frind',6) = Hello :

: RightStr

Rightstr('Hello Friend',6)=Friend :

: LowerCase

. () S

LowerCase(Hello Friend) = hello friend :

: UpperCase

UpperCase (' Hello Friend') = HELLO FRIEND

: Trim

S

:

:

Edit

edit1.Text:= Trim(edit1.Text);

' Hello All '

Edit1

. 'Hello All'

TrimRight TrimLeft

.

: Format**Format (S :String ; A:array of const) ;****S****A...**

:

:

var s1:string;

var i,j :integer; z:real;

begin

i:= 200;j:=5; z:= i/j;

s1:= format('If You Divide %d by %d the result will be %g',[i,j,z]);

form1.Caption := s1;

. If You Divide 200 by 5 the result will be 40

%d

%d (I)

. %g Z

%

Format

:

.	d (decimal)
.	x (hexadecimal)
.	p (pointer)
PChar	s (string)
.	e (exponential)
.	f (floating point)
.	g (general)
.	n (number)
Currency and : - .date/time formatting variables	m (money)

:

:

Edit

ShowMessage(Format (' %s',[Edit1.Text]));

.....

Edit

```

:
TSrings
Lines      ListBox      Items
      . Tstrings      Memo
      TStringList.Create      TStrings
      .
      Free
:
Tstrings      Free
      . (      )
:
:
1
.
:
Edit      ListBox
:

```

```

var a:TStrings;
Begin
a := TStringList.Create; //
a.Add(Edit1.text); //
Form1.Caption := a.Strings [0]; //      ( 0 )
ListBox1.Items.AddStrings(a); //  ListBox      a
a.Free ;
end;

```

```

TsrtingList.Create
:
2
TStrings
:
:
.      Puplic      TStrings      A
:      OnCreat
A := TStringList.Create;

```

```

OnDestroy
:
A.Free;

.....

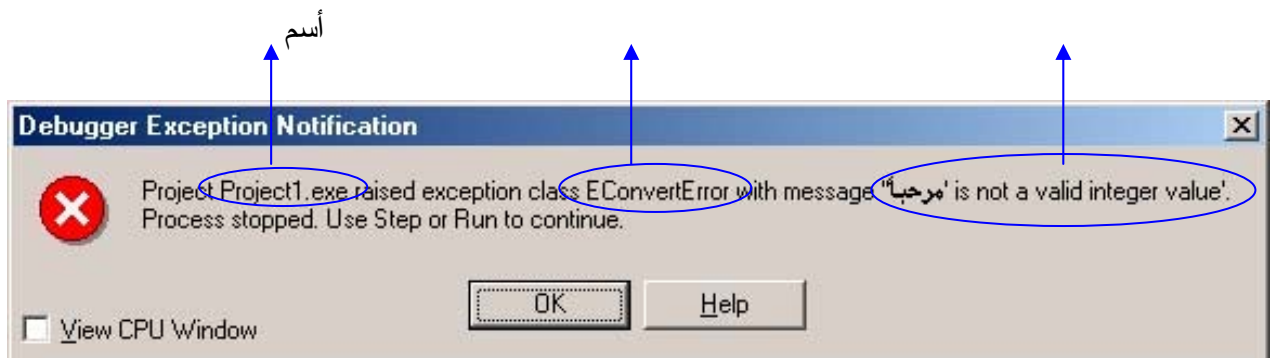
OnDestroy
:
Free      Create
:

.....

)      Exceptions
      (
      Try
      : Try..... Except      1
      (      )
      End      Except      End      Try
      :
      Edit
:
var i :integer;
begin
i:= strtoint(edit1.text);

      (      ) Edit
:

```



EconvertError



Exception1

Exception1

Var i :integer;**Begin****Try**

i:= strtoint(edit1.text);

Except

Showmessage (‘

end;

Except

(

. Try

Try . . End

:

Edit

:

: 2

Edit

var i,j :integer;z:real;**Begin****Try**

i:= strtoint(edit1.text);

j:= strtoint(edit2.text);

z:= i/j;

edit3.Text := floattostr(z);

Except

<http://www.alshater.net>

Showmessage (' ');

end;

Edit1

Except

End Except

Except Try

Edit2

(" / 0 / Edit2 /232/ Edit1
EzeorDivide

:

Var i,j :integer;z:real;

Begin

Try

i:= strtoint(edit1.text);

j:= strtoint(edit2.text);

z:= i/j;

edit3.Text := floattostr(z);

Except

On Econverterror **Do** Showmessage (' ');

On EZeroDivide **Do** shOwmessag(' ') ;

end;

Do EconvertError : On Econverterror Do

...

: EmathError)

EzerDivide) (.... EintError

(ErangeError

EconvertError

.....

: Try .. Finally 2

:

: 1

:

Var a:tstrings ;

i:integer;

begin

a:= Tstringlist.Create ; //

<http://www.alshater.net>

```
i:= strtoint(edit1.text);//
```

```
i:= i * 5;
```

```
a.Add(inttostr(i)); //
```

```
Form1.Caption := 'Done'
```

```
a.Free ;
```

Edit

a.Free

EConvertErrorr

) a

Form1.Caption := 'Done'

(

:

```
Var a:tstrings ;
```

```
i:integer;
```

```
begin
```

```
Try
```

```
a:= Tstringlist.Create ; //
```

```
i:= strtoint(edit1.text);//
```

```
i:= i * 5;
```

```
a.Add(inttostr(i));
```

```
Finally
```

```
Form1.Caption := 'Done' ;
```

```
a.Free ;
```

```
end;
```

Finally

Run

. ()

Finally

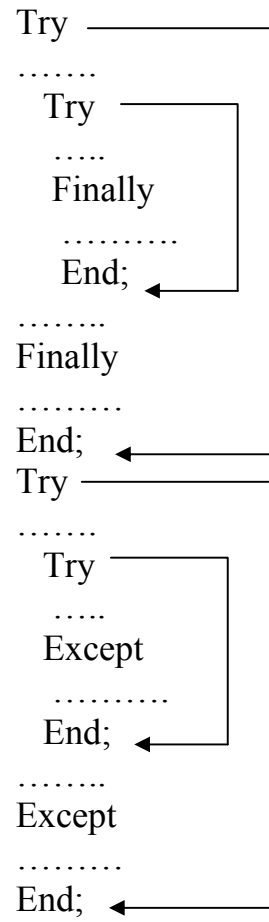
Try Finally

. (Finally Edit)

: Try

:

Try



) (Except) Try
(Finally
.
:

(Bugs)
(Debug
1

:
.
:

Run Trace into



Run Step Over F7

. F8



Trace Into

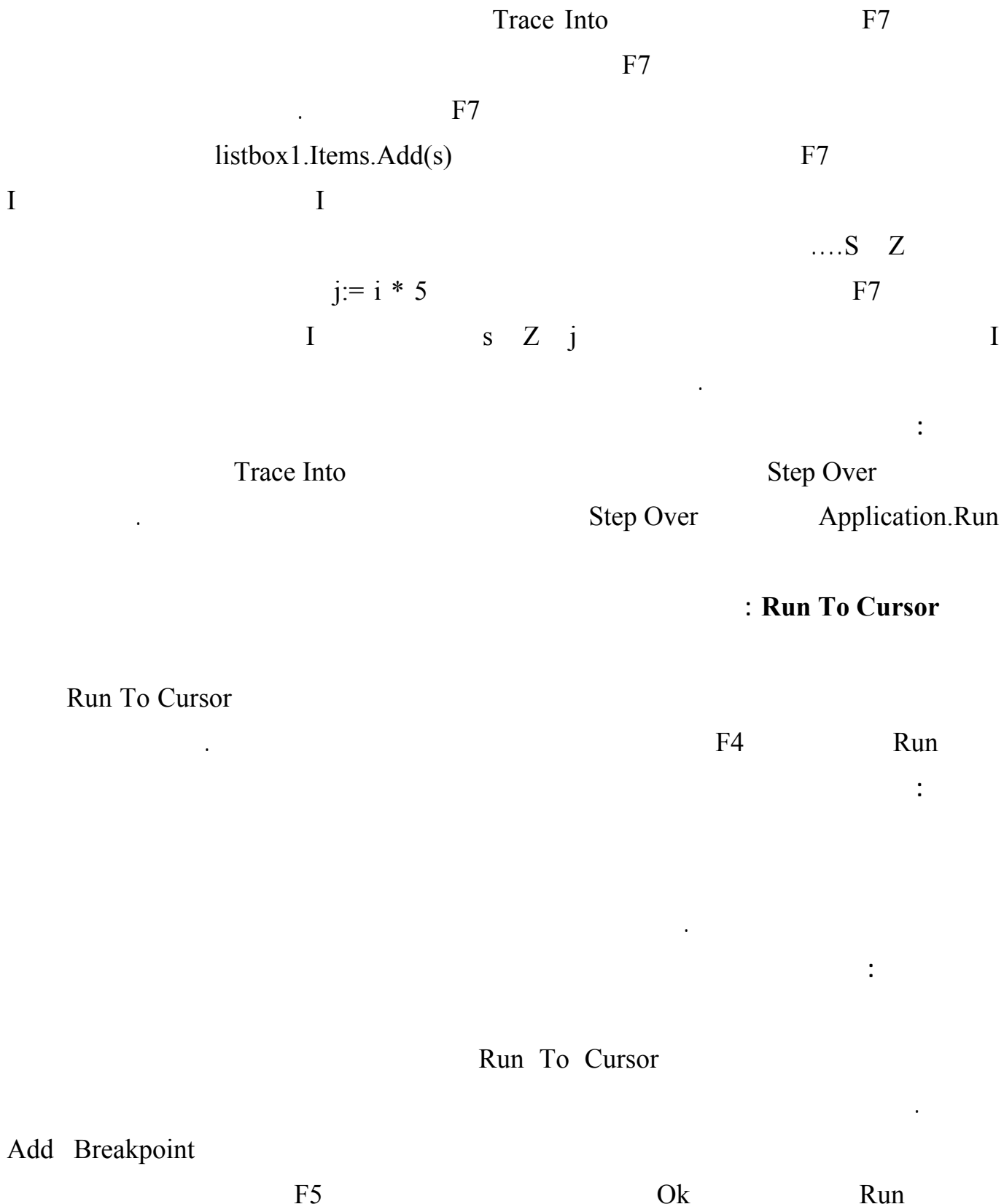
Trace Into Step Over

ListBox

```

:
Var s:string ;
i , j ,z :integer;
begin
for i := 0 to 500 do
begin
j:= i * 5;
z:= j * 2 ;
s:= inttostr ( j ) + ' ' + inttostr(z);
Form1.Caption := s;
listbox1.Items.Add(s)

```



View

Enable

: **3**

)

(... F5

.... Breakpoint \rightarrow Delete All

)

(500 j

$$j =)$$

Condition

Breakpoint Properties

(500

5

Breakpoint Properties

Pass count

```
100    Pass Count    listBox1.Items.Add(s)
```

100

:

•

Debug \rightarrow Add

1

Watch at Cursor

. Ctrl F5	Run	Add Watch	2
-----------	-----	-----------	---

View → Debug Windows → watches View Watch List 3

View → Debug Windows → :

:

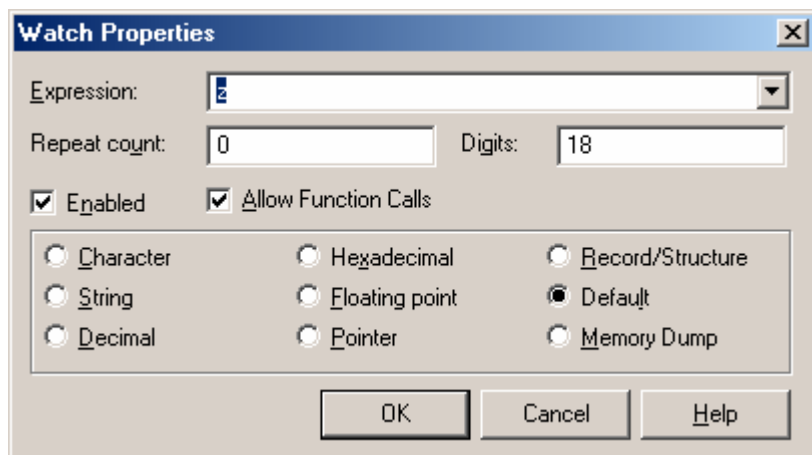
watches

Disable

. Delete

:

Edit Watch



Expression

i+j

: Repeat Count

Expression

/4 /

Repeat Count

Hexadecimal

Digits

. Floating Point

:

View → Debug Windows → call

Stack

Add (10) ;

:

:

Procedure Add (x) ;

:

Add

Begin

X := x +1;

If X < 50 then Add (x) ; // 50

End;

_____:

Database

File

Hard Disk

.

.

)

()

()

(

SQL Server

Access

.

Database Management Systems (DBMS) "

"

.

"

Structured Query Language (SQL) "

.

_____:

:

	1997/1/2			1255
	2002/2/9		VB.Net	1256
	1944/3/3			1257
	2000/4/2			1258
	1990/3/12			

.() :

:

)

.(

)

.

(

()

LongInt Integer

. Date

)

)

(

.(

:

..

..

ID

..

100

()

..

" " " " " 100 : " "

	1997/1/2	50		1255
	2002/2/9	56	VB.Net	1256
	1944/3/3	100		1257
	2000/4/2	100		1258
	1990/3/12	100		

	50
	56
	100
	114

Byte

..! 48

8

100

12

" "

32000

. ..

..

30

20

..

600

$600 = 20 \times 30000$

!

.

60

60

:

(

)

3

..

.

$66 = (2 + 20) \times 3000$

$126 = 66 + 60 =$

!

.. " : () ..

!

:

Normalization

..

. ()

:Relational Databases

Relationship

:

..

.Key field " -

Primary Key " -

. Unique

Foreign Key " -

..

" " Master " -

Detail

..Join " -

One-to-many Relationship " -

Many-to-many Relationship " -

" " ..

:

AuthorID	BookID
23	1
106	1
8	2
8	3

8 2 106 23 ..3 2

:Referential Integrity

!

Referential Integrity

:

: 1

: 2

: 3

: 4

: 5

)

(

) Harry potter

(2003

).

(

:

1

2

3

4

5

6

1

2

3

1

2

:

1

2

3

:

:

)

(

()

()

. ()

. Paradox, dBASE, FoxPro, and Access. :

:

()

Microsoft SQL ()

Server

)

(3.6 TB

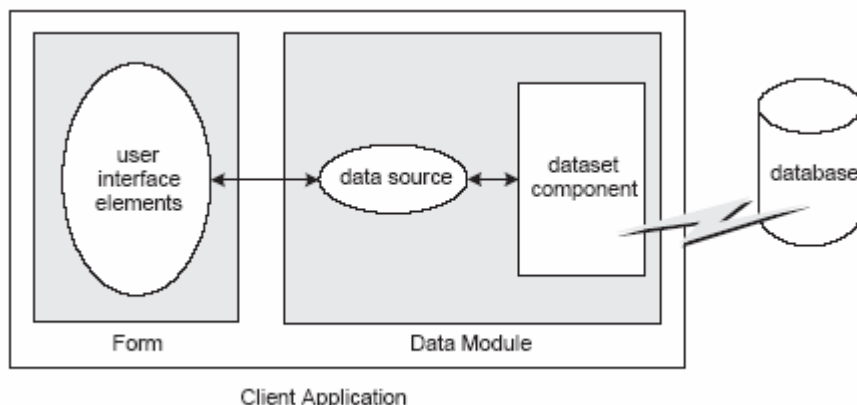
...

Structured Query Language (SQL)

InterBase, Oracle, Sybase, Informix, Microsoft SQLserver, :

and DB2.

3



: Data Access) :

.

:

()

)

Oracle

Data

.Access

:

:

: 1

(Form Wizard)

. Database

File → Close

()

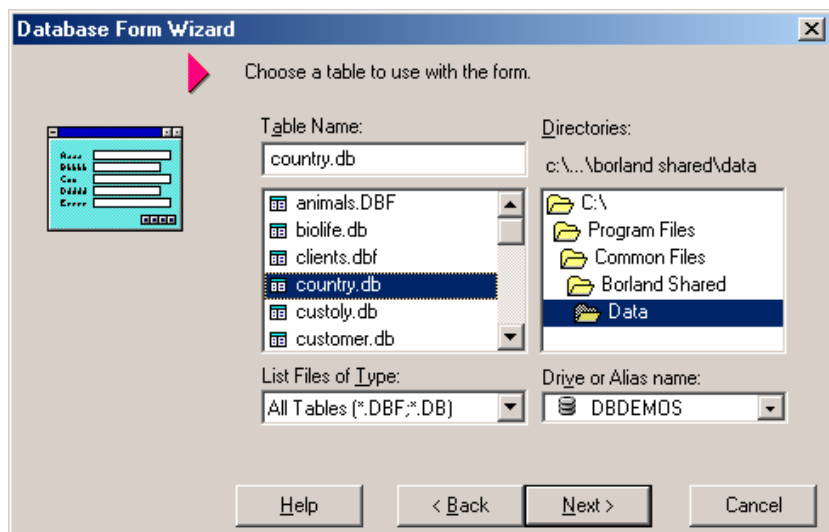
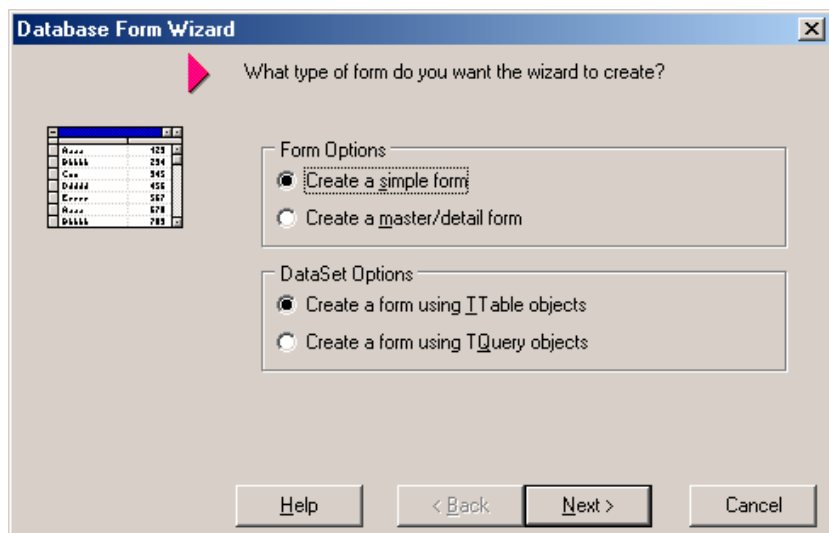
Ctrl+F4

:

Database → Form Wizard

:

Next



DBDEMOS

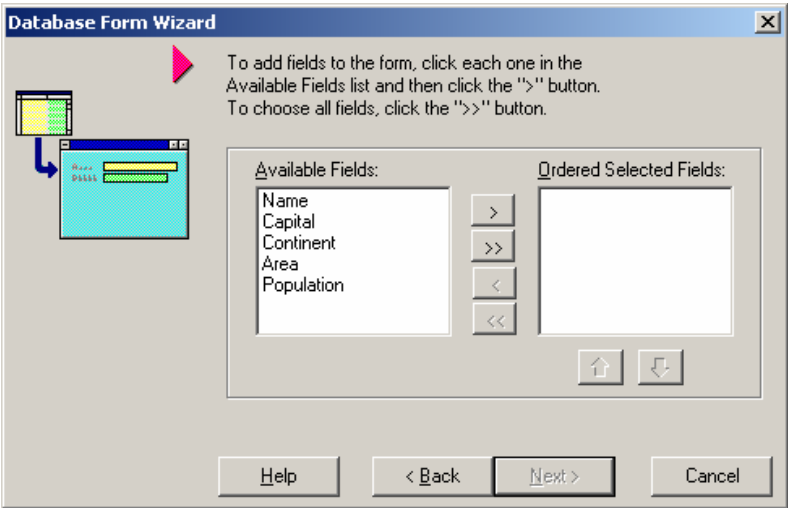
) Drive or Alias Name

(

DBDEMOS

Country.db

. Next



>

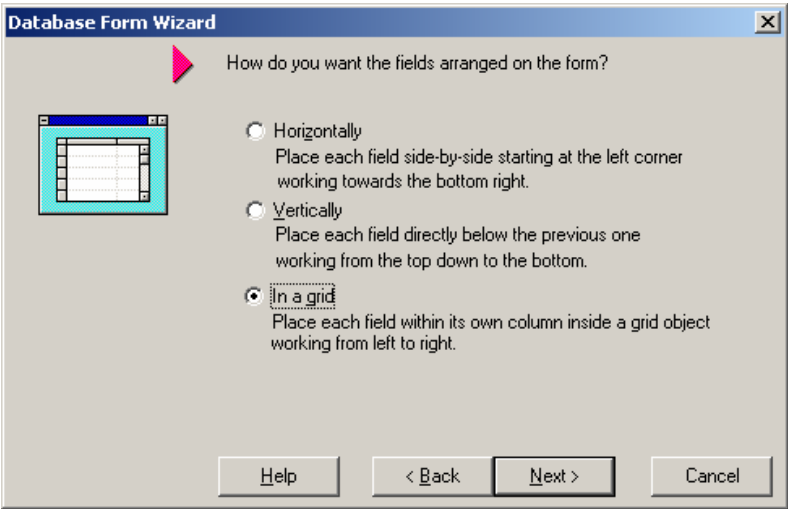
>>

<

<<

. (>>)

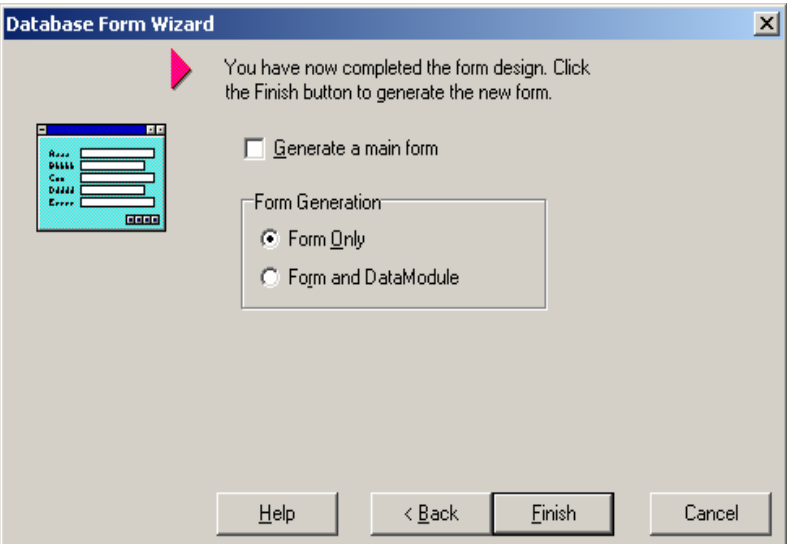
Next



:

(In grid)

Next

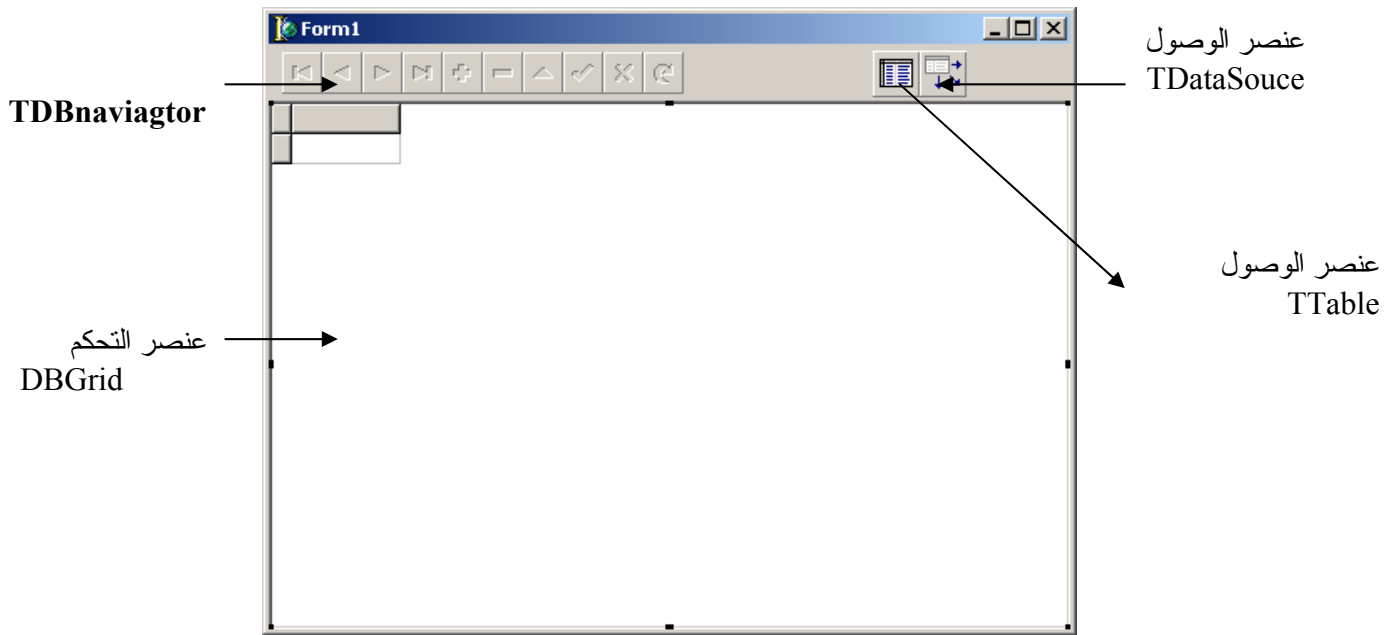


)

(

Generate a main form

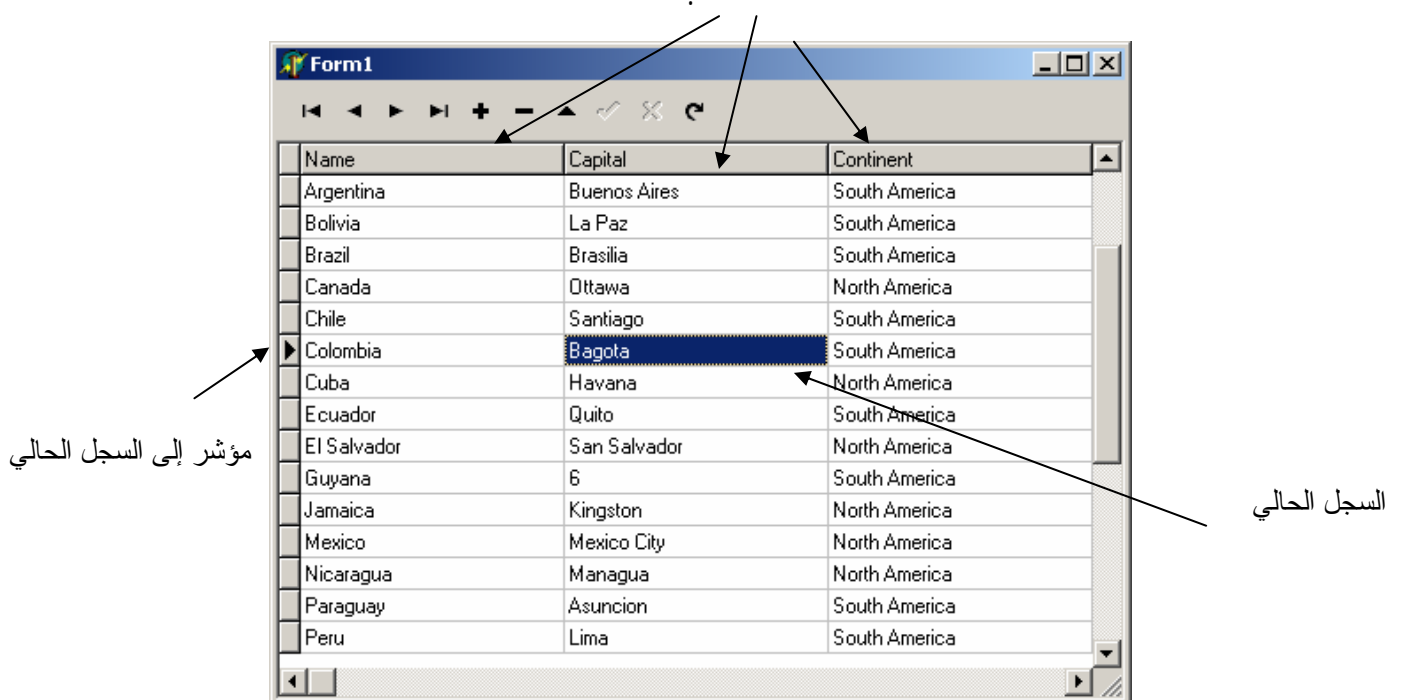
Finish



:

1
2

DBGrid



:

: Table

DataSet

Table, Query, AdoTable, AdoQuery,

Table

:

DBDEMOS	DBDEMOS	DataBaseName
) ()		
	country.db	TableName
) (Table1	Name
True	False	Active

: DataSource

DataSet

Table

:

() ()	True	AutoEdit
False		
Datasource	Table1	Dataset
)	Datasource1	Name

(
---	--	--

: (DBGrid)

Datasource

:

DBGrid	Datasource1	Datasource
	Dbgrid1	Name

: DBNavigator

True

DataSource

Datasource

ShowHint

Table1.Open

. True

Table

Active

: (Database Engine)

:

: Borland Database Engine : BDE 1

Bde

. Dbase Padox

: Microsoft ActiveX Data Objects : ADO 2

Access

Ado

. Oracle SQL SERVER

:Interbase 3

Interbase Express

.

Interbase

:

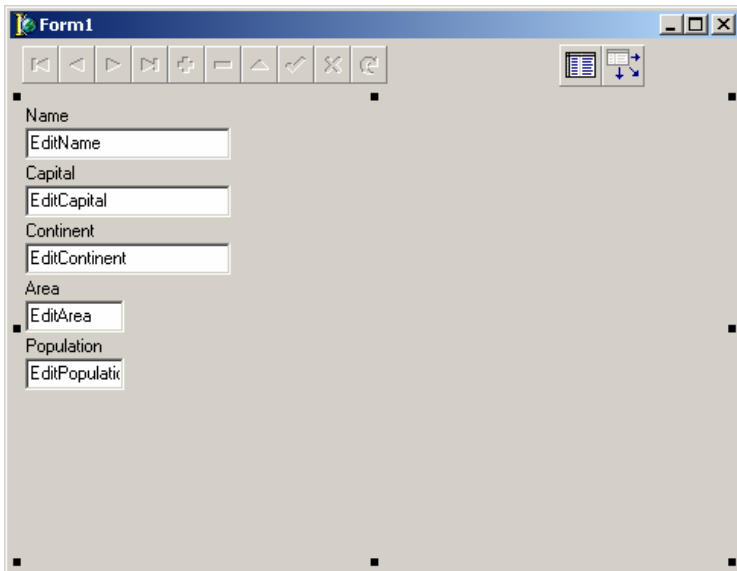
: 2

(Vertical)

Finish Next

(Left)

:



Dbedit
Datasource
DBNavegator
)
(
)

DataSource1
DBEdit

Datasource

Datacontrole
DBGrid

DBGrid

:(Master \ Detail Form)

:3

:

Customer.db

Orders.Db

: Customer.db :

(.....)

: Orders.db

(....)

. (

Database→ Form Wizard

Form Option

Create Master Detail Form

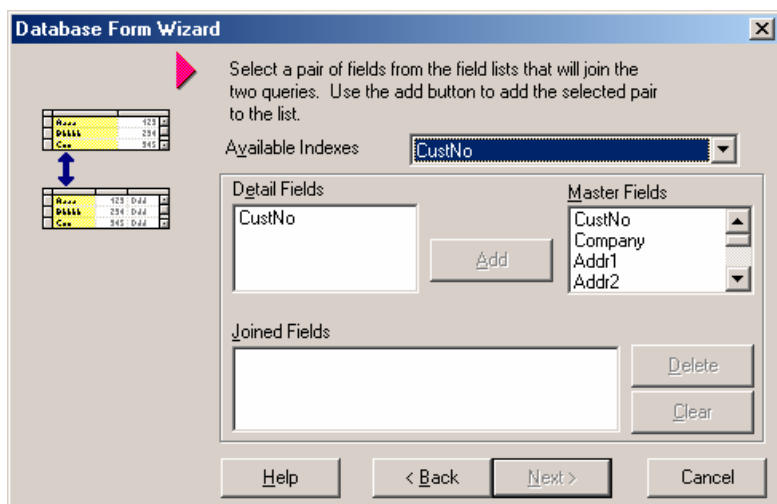
Next

Driver or alias name DBDEMOS

Customer.db

. in a grid

DBDEMOS Orders



)

CustNo Available Indexes

Master Fields

CustNo

CustNo

Detail Fields

Next

Add

Next

:

Master

... Detail

Datasource

Table

:

Tabel2

DataSource	Datasource1	MasterSource
	CustNo	IndexName

:

: 1

DBDemos

Country.db

:

BDE

Table

1

. Data Access

DataSource

_ 2

: Table

DBDEMOS ()	DBDEMOS	DataBaseName
	country.db	TableName
True	True	Active

: DataSource

() () False	True	AutoEdit
Datasource	Table1	Dataset

: DBNavigator DBGrid

DBGrid	Datasource1	Datasource

: 2

: Master Detail Form

DBGrid DataSource Table

. DBNavigator

: (Master) 1

: Table1

DBDEMOS ()	DBDEMOS	DataBaseName

	Customers.db	TableName
True	True	Active

. Table1 DataSet DataSource1
 . DataSource1 DataSource DBNavigator1 DBGrid1

: Detail 2

: Table2

DBDEMOS	DBDEMOS	DataBaseName
) ()		
	order.db	TableName
True	True	Active

. Table2 DataSet DataSource2
 . DataSource2 DataSource DBGrid2
 Table2

. Table1

MasterField Datasouce1 MasterSource Table2
 CustNo

:

Oracle

Borland Paradox

(Paradox)

Oracle 9i

Database Desktop

: DataBase Desktop

:

:

		GoFrom
		ArriveTo
		GoTime
		ArriveTime
		CardCount

(Passengers)		
	*	Pno
		Pname
		Nationality
		PassNo

TripsAndPassengers		
		Pno
		TripNo
		SeatNo
		ClassNo

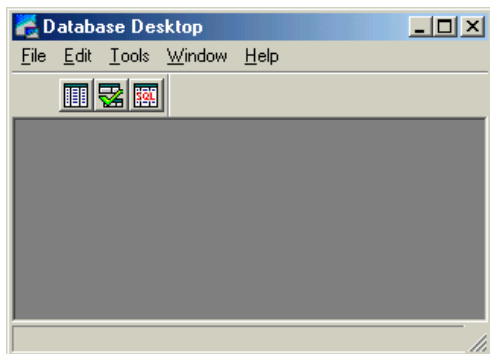
(Trips)		
	*	TripNo
		Company

(*)

200 1

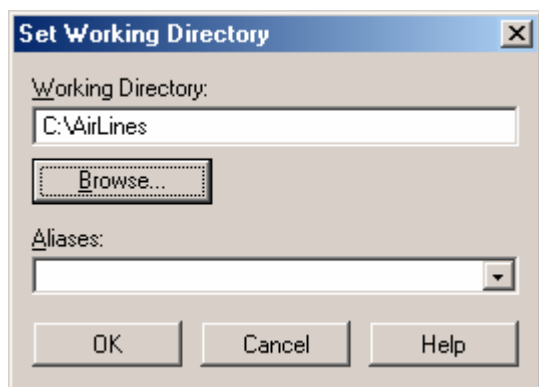
C AirLines 1

: Database Desktop 2



Start → Programs → Borland Delphi → Database Desktop
Tools → Database Desktop

: 2



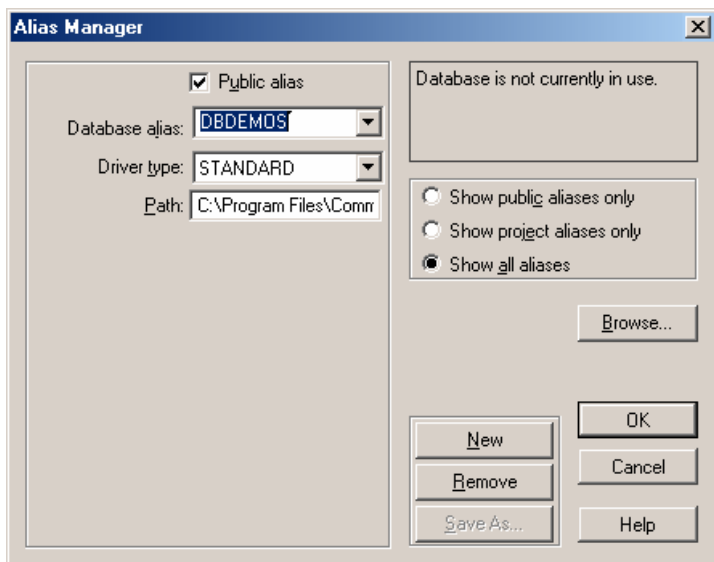
C:\

Browse

File → Working Directory

AirLines

ok



: Alias 3

Alias Manger

C:\AirLines

Database Desktop

Tools

Database

New

Alias

(Travel)

) STANDARD

Driver Type

Standard

.(

(Browse) Path C:\AirLiens
Ok Keep New
Yes IDAPI32.CFG

:

1

C:\AirLiens Table DatabaseName

2

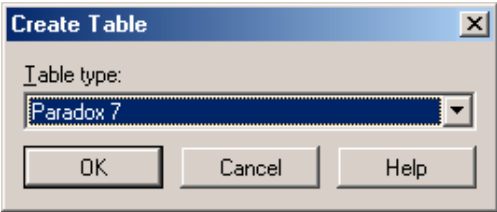
D:\1998 1998

3

Alias Public Alias Alias Manger
Alias Database Desktop
Remove

5

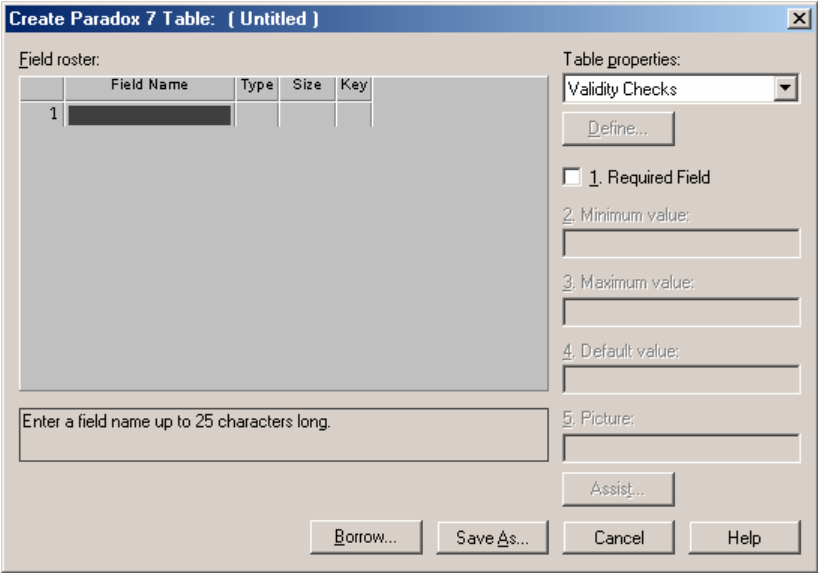
:



File → New → Table

) Database Desktop

Paradox7 (



Database

Desktop

: Field roster

: Field Name

1

SQL

SQL
SELECT From Date ...
: Type 2

Space

Type

: Paradox

Type

	A	255 – 1	Alpha
	N		Number
	\$		Money
Integer	S		Short
Longint	I		Long Integer
) (⁽¹⁾	#	0 .. 32	BCD
	D		Date
	T		Time
	@		TimeStamp
(⁽²⁾ ,	M	1..240	Memo
) (⁽²⁾ ..	F	0.. 240	Formatted Memo
(⁽³⁾	G	0..240	Graphic
(⁽³⁾ (Excel)	O	0..240	OLE
False True	L		Logical
	+		Auto increment
(⁽³⁾ .Mb	B	0..240	Binary
Db	Y	1..255	Byte

: (1)

255

Memo

: (2)

MB

30

30

).Db

30

.Mb

(3)

Size

3

20

A

Alpha

"

"

.

: Key ()

4

:

)

(..

Null " "

:

Auto

. Increment

:

.Null " "

:

[illegible]

	Field Name	Type	Size	Key
1	PNo	+		■
2	Pname	A	30	
3	Nationality	A	30	
4	PassNo	I		
5				

Key

Field

30 Size

Alias

	Field Name	Type	Size	Key
1	TripNo	+		■
2	Company	A	25	
3	GoFrom	A	20	
4	ArriveTo	A	20	
5	GoTime	@		
6	ArriveTime	@		
7	CardCount	S		

	Field Name	Type	Size	Key
1	PNo	I		
2	TripNo	I		
3	SeatNo	I		
4	ClassNo	I		

+ Type " PNo " Filed Name
()

"A" Type	Pname	Name
Key	30	

Save As

Passengers	Travel
------------	--------

Paradox7 File→ new→ table

. Trips Travel

Paradox7 File→ new→ table

PassAndTrips

Paradox :

Db 1

Mb 2

File→Open → Table

Passengers.db

:

Table → Restructure

Table properties

: **Validity Checks** **1**

:

: Required Field 1

.

: Minimum 2

: Maximum 3

: Default Value 4

: Picture 5

MaskEdit

Assist

:

Trips

350 0

Table→ Restructure

File→Open → table

Trips

Required

Company

Table Properties

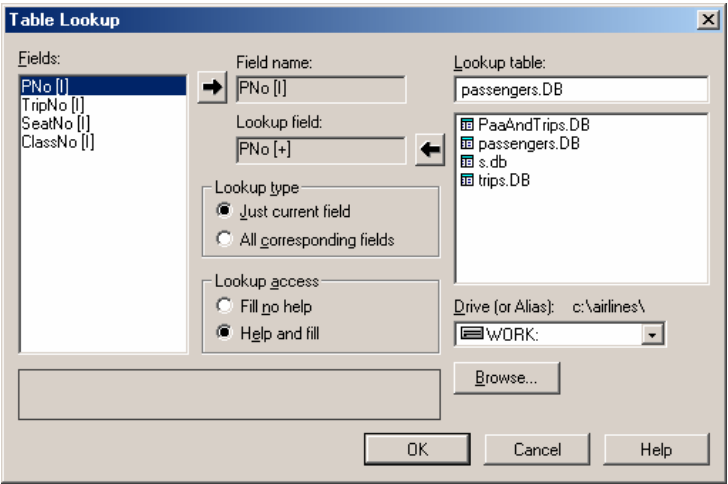
Validity Checks

.Field

. 350 Maximum 0 Minimum CardNo

Save

: **Table Lookup** **2**



```

:
Table → Restructure
Define Table Properties PassAndTrips
Table LookUp PNo
:
. Ok Passengers.db Lookup Table
. Trips TripNo
..
.
:Secondary index 3
)
. (

```

```

: ( )
( )
..
: ..
.
..!
! ..
! :
!!
..Indexes :
..
2 ( ) 1 ( ) ..
. ....
:

```

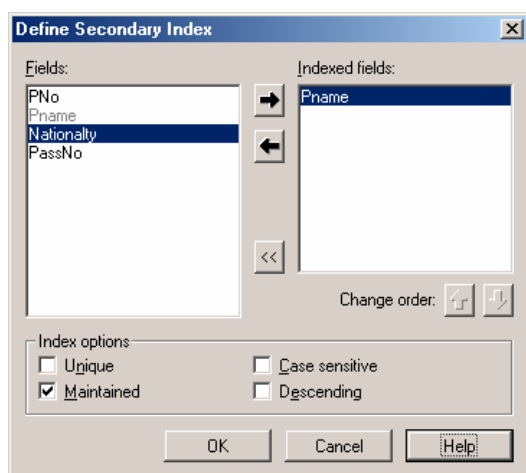
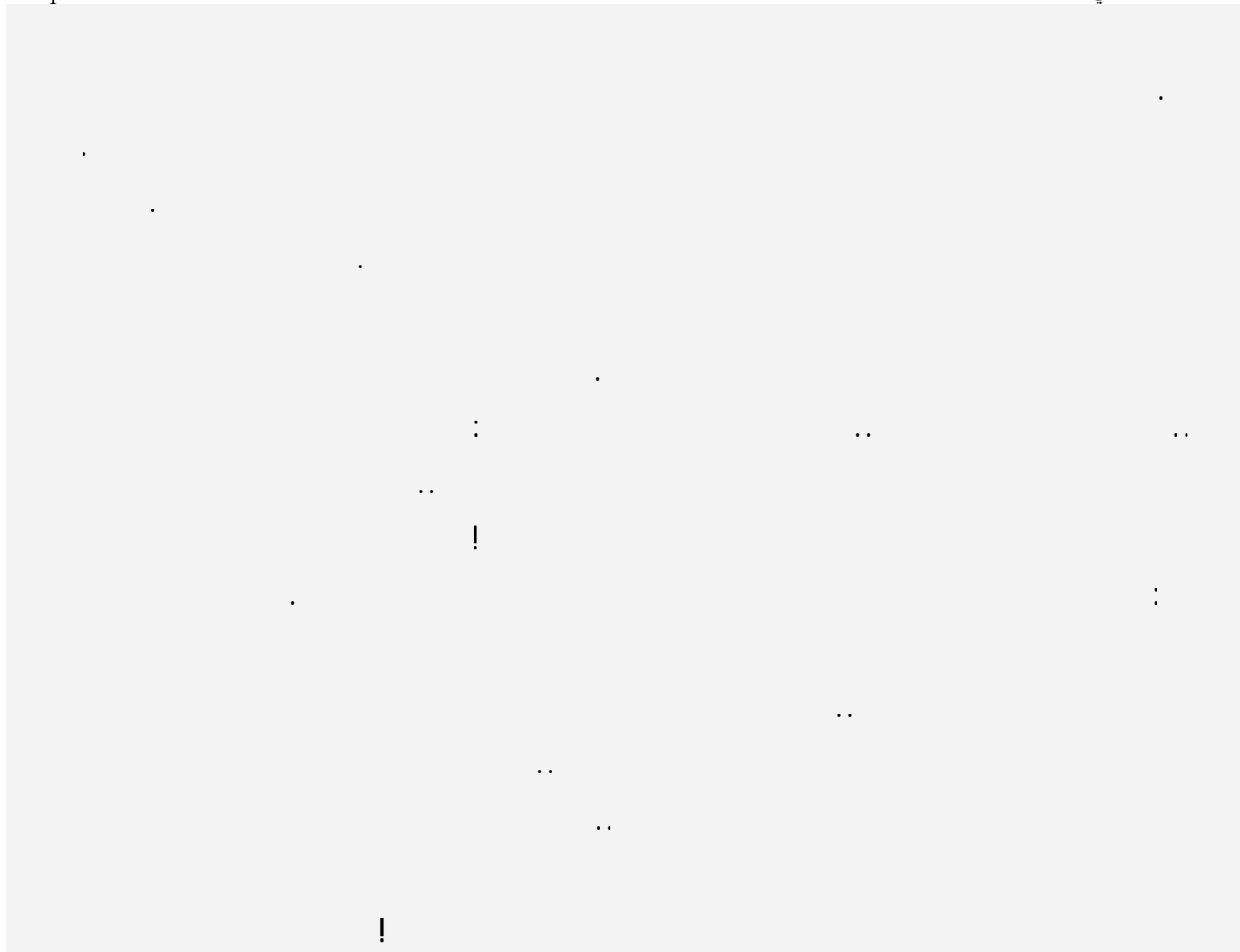


Table → Restructure

Secondary Index

Table Properties

:

Define

Fields

PName

Indexed Fields

: Index Option

: Unique 1

)

. (

: Maintained 2

: Case Sensitive 3

: Descending 4

. PNameIndex

Ok

:

. ()

1

2

3

: Referential Integrity

)

(

"

"

"

"

"

"

:

Referential

Table → Restructure

PassAndTrips

: Define

Table Properties

Integrity

:

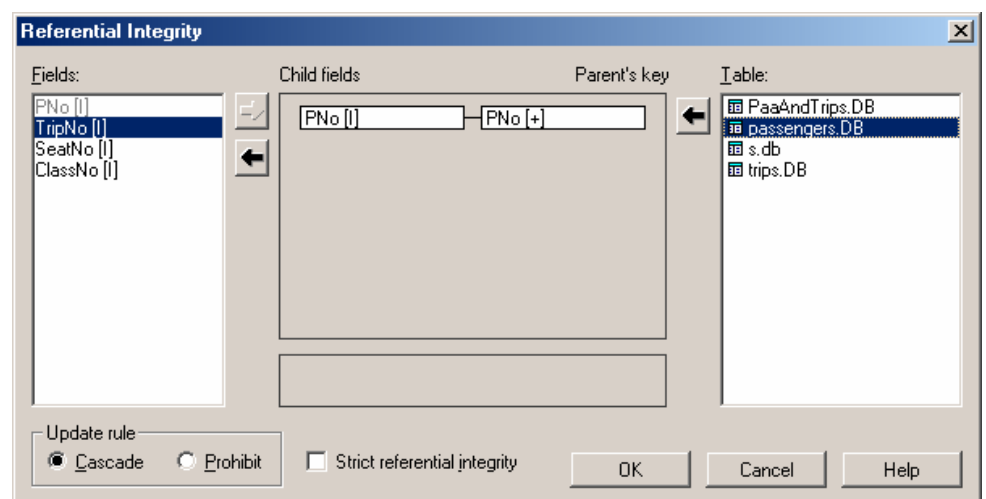
Table

→

PNo

←

Update Rule



: Cascade

1

)

"

"

2 : Prohibit

()

3 : Strict Referential Integrity

.Dos

Ok

...

:

1 Prohibit Paradox

2 Cascade SQL

2

.

" "

5 :

1 Table Security Table → Restructure

properties Define

:

Master Password

Verify Master Password .Ok

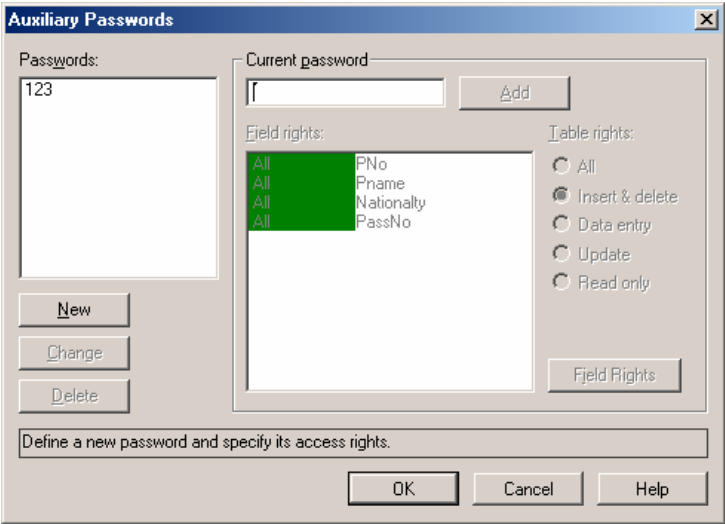
Auxiliary Password

Current Password

Add Table rights

Read Only

....



1

. Delete

Modify

:

Paradox

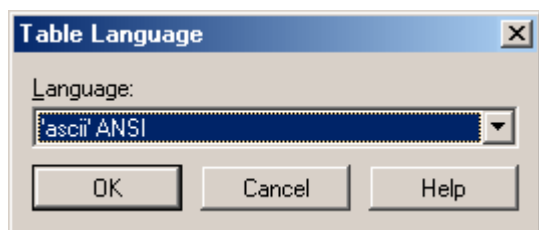
Oracle MySQL

. MS SQL Server

: **Table Language**

6

Table Language



. 'Ascii' ANSI

: Dependent Table

7

:

Dependent Table

(Passengers)

. (PassAndTrips)

Table properties

:

Paradox

1

Dbase

....

Paradox

2

3

4

:

Database Desktop

:

Database Desktop

Change

Edit → Preferences

Arabic Transparent

:

Edit

)

F9

Table

.(

Table : passengers.DB				
passengers	PNo	Pname	Nationality	PassNo
1	1	أحمد	سورية	1234455
2	2	فؤاد	السعودية	9875234
3	3	زليخا	مصر	456454

Tab

1

Table : trips.DB							
	TripNo	Company	GoFrom	ArriveTo	GoTime	ArriveTime	CardCount
1	1	الاسورية للطيران	دمشق	القاهرة	12:32:46 ٠٤/٠٩/٢٠	03:32:50 ٠٤/٠٩/٢٠	50
2	2	الخطوط الإيطالية	لبنان	حلب	12:33:40 ٠٤/٠٩/٢٠	12:33:43 ٠٤/٠٩/٢٠	40
3	3	طيران الإمارات	دبي	لندن	12:34:23 ٠٤/٠٩/٢٠	12:34:24 ٠٤/٠٩/٢٠	30

CardCount

400

.(

)

TimeStamp

:

PNo

Table : PaaAndTrips.DB				
PaaAndTrips	PNo	TripNo	SeatNo	ClassNo
1	1	1	33	33
2	2	1	66	66
3	3	2	2	32

Ctrl + Space

PNO

Passengers.db

PNo

()

Key Violation

. Record

Database Desktop

:

. Table, DBGrid, DataSource, DBNavigator

Table1

Travel	DatabaseName
Passengers	TableName
True	Active

DataSource1 Table1 DataSet DataSource
 DataSource DBGrid DBNavigator

...

:

Data Control

.

:Tfield

(Table)



Tfield

Table1

Add

All Field

..

. DBGrid

Pno

1

PassNo

2

. DBGrid

Delphi

Type

Table1Pname: TStringField; //

Table1Nationalty: TStringField;

Table1PassNo: TIntegerField; //

```

: Tfield
PassNo

Table1Pname: TStringField
    . Name
    . DBGrid          taCenter          Alignment          3
    . "                "                DisplayLabel        4
:
:
: TFeild
: label1
:
Label1.Caption := Table1Pname.value ;
    Label          Pname
...
Caption          Caption          Tabel1Pname
:
String
Label1.Caption := Tabel1PassNo.AsString ;
    AsFloat  AsInteger  AsBoolean
TField
    . AsDateTime
: FieldByName ( )
:
TableName.FeildByName('FieldName').Value
:
TableName.FeildByName('FieldName').AsType
:
: Label
: ( 1 )
:
label1.Caption := Table1.FieldByName('Pname').Value
:
Label2.Caption := table1.fieldbyname('PassNo').AsString ;
    Variant
:
Table1['FieldName']
:
:
Label1.Caption := Table1['Pname'] ;
:

```

Label2.Caption := table1['PassNo'] ;

AsString

:

**TableName.Field[Index].Value
.AsString**

:

Label1.Caption := Table1['Pname'] ;

:

Label2.Caption := table1.Fields[3].AsString ;

:

: () 1

:

Table1.Edit ;

Table1.FieldName('FieldName').Value := NewValue ;

Table1.Post;

Database Desktop

. Table1.Edit

Table1.Post

.

:

Edit

:

Table1.Edit ;

Table1.FieldName('Pname').Value := Edit1.Text ;

Table1.FieldName('Nationalty').Value := Edit2.Text ;

Table1.FieldName('PassNo').AsString := Edit3.Text ;

Table1.Post ;

table1.FieldName('PassNo').AsString := edit3.Text ;

Table1.FieldName('PassNo').Value := strtoint(Edit3.Text) ;

.

DBGrid

:

DataSource

AutoEdit

False

) DataSoucre

.

Table1

(

```

Table1.insert ;
Table1.Fieldbyname('Pname').Value := Edit1.Text ;
Table1.FieldByName('Nationalty').Value := Edit2.Text ;
Table1.FieldByName('PassNo').AsString := Edit3.Text ;
Table1.Post ;

```

Table1.insert

```

Table1.Fieldbyname('Pname').Value := Edit1.Text ;
Table1.Field[0].Value := Table1['Pname'] := Edit1.Text ;
Edit1.Text ;
.... Table1Pname.Value := Edit1.Text

```

: Data Control

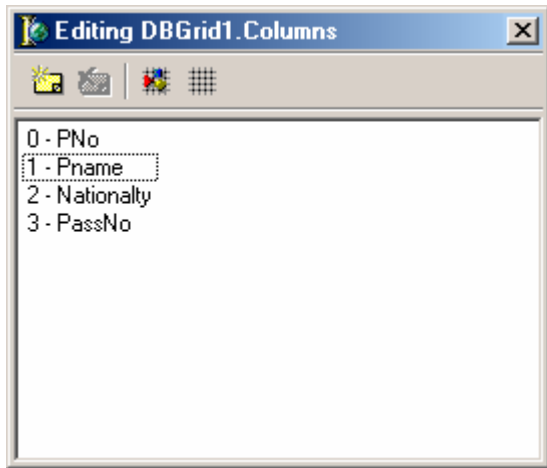
: DBGrid 1

	bdRightToLeft	BiDiMode
		Color
		FixedColor
		Font
		TitleFont

: Option

	True or False	dgEditing
	True or False	dgTitle
	True or False	dgIndicator
	True or False	dgCollLines
Tab	True or False	dgTabs
	True or False	dgRowSelect
	True or False	dgConfirmDelete

	True or False	dgMultiSelect
--	---------------	---------------



: Columns
DBGrid

:

)

(Add All Field

:

Delete

DBGrid

:

Table

)

Data Control
Table

. (

:

		Alignment
		Color
)	(Font
		Title-Alignment
()	Title-Caption
		Title-Font

: PickList

:

String List

...

PickList

Nationality

:

Editor

.....

Nationality

.

```

        ( Add New )
    )
    FieldName
    . (
        DBGrid
        ....
        : DBNavigator      2
        . (      )      : Flat
        .      : Hints
        .      : VisibleButton
        .      Label      : DBtext      3
        .      : DBEdit      4
        .Memo      : DBMemo      5
        .      : DBImage      6
    
```

: Data Control

: DBImage 6

: (DBImage DBMemo) :

DBImage DBGrid Datasource Table :

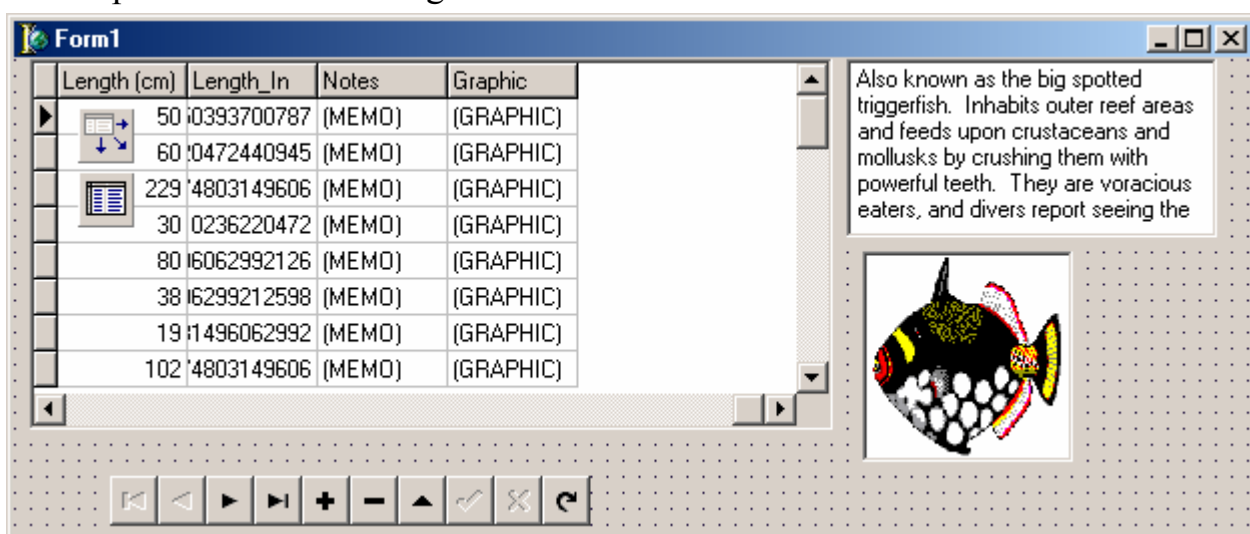
DBNavigator DBMemo

) biolife.db DBDemos Table1

DataSource DataSet True Active (

.. DataSource1 DataSource Table1

... Graphic DBImage1 Datafield Notes DBMemo1



DBGrid

Graphic Notes

DBMemo

: DBImage

: Graphic ()

DBGrid

Insert Edit

DBMemo

Clipboard

DBImage

DbImage

1

DBImage1.PasteFromClipboard

Ctrl+v

OpenPictureDialog 2

) OpenPictureDialog

: (Jpg Jpeg

```
If OpenPictureDialog1.Execute then Begin
DBImage1.Picture.LoadFromFile(OpenPictureDialog1.FileName );
DBImage1.CopyToClipboard ;
DBImage1.PasteFromClipboard ;
end;
```

DBImage1

DataSource DBImage 3

:

```
Table1.edit;
If OpenPictureDialog1.Execute then
Table1Graphic.LoadFromFile(OpenPictureDialog1.FileName);
Table1.Post ;
```

:

Jpg 1

Bmp Jpg Bmp

Bmp 2

Jpg Binary

...

: DBListBox 7

: DBComboBox 8

: DBDateTimePicker 9

TimeStamp Time Date

Kind

: (DBcomboBox DBListBox) :

DBedit DataSource Table

. DBNavigator

DBDateTimePiker

DBComboBox

DBListBox



Trips

Travel

Table1

. True Active

Table1

DataSoucel

Datasoucrce1

. DataSource

Datafield

TripNo

DBedit1

) True

ReadOnly

(

..... Company

DBedit2

: Items

GoFrom

DBListBox1

..

: Items

ArriveTo

ComboBox1

...

) dtkTime

Kind

GoTime

DBDateTimePiker1

. (Timestamp

GoTime

:

. DbListBox1 ComboBox1

1

. DBListBox1

GoFrom

2

DBComboBox1

ArriveTo

3

...

DbGrid

4

. Logical

: DBCheckBox

10

: DBRadioGroup

11

:

:

DataSource

DBRadioGroup

DBListBox

:

Items

GoFrom

DataField

Datasource1

..

```

        ...
        Values
        Items
        ..
Item          DBListBox          : DBLookupListBox          _ 12
.
Item          DBComboBox          : DBLookupComboBox          13
.
:
PassAndTrip "
DBLookupListBox
DBLookupComboBox
.
DBedit        DataSource        Table
. DBGrid        DBLookupComboBox        DBLookupListBox        DBNavigator
.   DataSource1        Travel        PassAndTrip        Table1
.   DataSource2        Travel        Passengers        Table2
.   DataSource3        Travel        Trips        Table1
.   True        Active
.   DataSource1        Datasource
:   DBLookupListbox1
. "        "        Pno        : "PNo"        DataField
:   DataSource2        Listsource
.   Passengers
:   Pname        ListField
.   Passengers
PassAndTrip        : PNo        KeyField
KeyField
.   DataFields
:   DBLookupComboBox1
"        TripNo        : "TripNo"        DataField
. "

```

```

: DataSource3      Listsource
                    .Trips
: Company          ListField
                    . Trips
PassAndTrip        :TripNo      KeyField
                    .
                    . ClassNo    DBEdit2      SeatNo      Dbedit1
                    .
                    ....
                    +
                    ...
Memo              : DBRichEdit      14
                    Formatted Memo
                    : DBCtrlGrid      15
                    .
                    :
DataSource2         DataSource
                    .      Pname      DataField      DBedit
                    .      : DBChart      16

```

```

:
( )

.
: Locate

:
Locate ( 'FieldName',SearchValue,Option ) ;
. : FieldName
. : SearchValue
: : Option

Option = [loCaseInsensitive] ,
Option = [ loPartiaKey ] ; " " " "
" "

Option = [ loCaseInsensitive , loPartiaKey ];
Option = [ ];
False True

.
:

Edit Button DbGrid DataSource Table
: DBGrid Travel Passengers

:
If Table1.Locate('Pname',Edit1.Text , [locaseinsensitive,lopartialkey]) Then
Showmessage(' The record is found ') Else
Showmessage ( ' There is no match , Try Another Value ');
. PName Edit1

" " )
loPartialKey ( " "
.

```

(ahmed Ahmed)

.... loCaseInsensitive

: Locate

()

: Locate

Locate ('FieldName1; FieldName2; FieldName3',VarArrayOf ([SearchValue1,
SearchValue2, SearchValue3]),Option) ;

: Edit2 :

if table1.Locate('pname;Nationalty',vararrayof([edit1.Text,Edit2.text]) , [
loCaseInsensitive , loPartialKey]) then
Showmessage('the record is found') else
Showmessage ('there is no match , Try Another Value');

. Variant VarArrayOf

:

SearchValue Long Integer Short

:

if table1.Locate('PNo;Nationalty',vararrayof([strtoint(edit1.Text),Edit2.text])
,[loCaseInsensitive,loPartialKey]) then
Showmessage('the record is found') else
Showmessage ('there is no match , Try Another Value');

: Lookup 2

:

:

:

var LookupResult : Variant;

begin

lookupResult := Table1.Lookup('Pno',strtoint(edit1.Text),'Pname;Nationalty');

if Not VarIsNull(lookupResult) then

Showmessage(vartostr(lookupresult[0]) + ' ' + vartostr(lookupresult[1]));

Variant

Edit1

VarIsNull

Null

Lookup

. Variant

```

variant VarToStr
:
Lookup 1
:
lookupResult := Table1.Lookup('Pno;Pname',VarArrayOf
([strtoint(edit1.Text),Edit2.text]),'PName;Nationalty');
lookup Locate 2
)
(
: FindKey
Findkey
:
:
If not Table1.FindKey( [ Strtoint ( edit1.text)]) Then
Showmessage ( 'the Record is not Found');
( ) PNo
True Edit
False
Table IndexName
.
) PNameIndex IndexName Table1 :
DbGrid ( Database Desktop
. PName
:
If not Table1.FindKey([edit1.text]) then
Showmessage ( 'the Record is not Found');
.....
: FindKey
TableName.FindKey ( [ SearchValue1,SearchValue2 ,...,SearchValue3]) ;
Table1.FindKey( [2,3]) : " " :
. 4 2

```

```

        ( False   True       )
                                :
                                :
                                :
Table1.FindNearest ([edit1.text]);
                                "   "
                                Edit1
                                "   "
                                :
                                : Filter (      )

                                .
                                .
                                . True   Filter      Table   Filter
                                :
                                :
                                ...
                                :
                                Button  DBGrid  DataSource  Table
                                .
                                DBGrid1      Trips
                                :   Filter      True   Table1   Filtered
GoFrom = '      '
                                . False   Filtered
                                :
                                : Filter
Gofrom = '      ' and Arriveto = '      '
                                ( True      Filter      )
                                : ...
(Gofrom = '      ' Or GoFrom = '      ') and Arriveto = '      '
                                "   "
Gofrom = ' *'
                                :   Filter      :   10
CardCount > 10

```

```

:
True    Filtered
:      10

```

```
Table1.Filter := ' CardCount > 10 '
```

```
:      Edit
```

```
Table1.Filter := ' CardCount > '+ edit1.Text ;
```

```
...      Edit1
```

```
:
```

```
Table1.Filter := 'GoFrom = '+ Quotedstr(edit1.Text) ;
```

```
) = '      '
```

```
Quotedstr
```

```
Quotedstr (
```

```
...
```

```
: Table
```

```
:
```

```
Table
```

```
Table1.Active := true
```

```
Table1.open
```

```
: Open
```

```
1
```

```
.
```

```
Table1.Active :=
```

```
Table1.Close
```

```
: Close
```

```
2
```

```
. False
```

```
.
```

```
Table1.First
```

```
: First
```

```
3
```

```
.
```

```
Table1.Last
```

```
: Last
```

```
4
```

```
.
```

```
Table1.Next
```

```
: Next
```

```
5
```

```
.
```

```
Table1.Prior
```

```
: Prior
```

```
6
```

```
)
```

```
Table1.MoveBy( 5 )
```

```
: MoveBy( x)
```

```
7
```

```
.( X
```

```
.
```

```
True
```

```
: Bof
```

```
8
```

```
.
```

```
True
```

```
: Eof
```

```
9
```

```
.
```

```
: RecordCount
```

```
10
```

```
.
```

```
: RecNo
```

```
11
```

```
..
```

```
: Delete
```

```
12
```

```
:
```

:

:DataBase Desktop

1

: Writer

1

Wadress	WName	* Wno
		1
		2

: Publisher

2

PubAdr	PubName	* PubNo

:

3

Edate	PubNo	WNo	Book	BookNo

2

3

4

5

6

:

)

.... (

350

:

= 350 -

CardCount

: DBGrid DataSource Table

DBGrid

Trips

...

. False

Table1

Active

Table

Type

Name

New field

CapCard

Field type

Calculated

Integer

. Ok

Event

Table1

:

OnClacFields

Table1CapCard.Value := 350 - table1Cardcount.value ;

CapCard

Table1

True

Active

... CapCard

CardCount

)

: 2

(" "

15/9/2003

False

Table1

Active

GoTime

OK

String

Type

TheDay

Name

:

OnClacFields

Case DayOfWeek (Table1GoTime.AsDateTime) of

: ملاحظة

1: Table1Theday.Value := ' ';

. Table

```
2: Table1TheDay.Value := '  ';
3: Table1TheDay.Value := '  ';
4: Table1TheDay.Value := '  ';
5: Table1TheDay.Value := '  ';
6: Table1TheDay.Value := '  ';
7: Table1TheDay.Value := '  ';
end;
```

.... DayOfWeek

..... GoTime

SQL (Structured Query Language) :

SQL :

.

: SQL

: Select

Select FieldName1 , FieldName2 , FieldName13....

From TableName1,TableName2 ...

[Where Condition]

[Group By FieldName1,...]

[Order By FieldName]

. []

From Select

:

Select PName , Nationality

From Passengers

BDE

Query

SQL

TableName

Table

. SQL

SQL

SQL

:

DBNavigator DBGrid DataSource Query

SQL

...

Travel

Query1

DataBaseName

:

Select PName , Nationality

From Passengers

) True Active

(

DBNavigator1 DBGrid1 Query1 DataSource1 DataSet
 . DataSource1

DBGrid Select

DBNavigator1

Select DBGrid1

Query SQL
 True RequestLive
 . Table Query

Select * : 2

: SQL)

Select *
 From Passengers

False Query Active SQL
 Select Where : Where

. 5 : 3

: SQL

Select *
 From Passengers
 Where PNo > 5

: 3 : 4

Select *
 From Passengers
 Where PNo = 3

: 5 2 : 5

Select *
 From Passengers
 Where PNo Between 2 and 5 ;

: 5 - 2 : 6

Select *
 From Passengers
 Where PNo Not Between 2 and 5 ;

: : 7

Select *

http://www.alshater.net

From Passengers

Where PName = ' ' ,

: 8

Select *

From Passengers

Where Pname Like ' %'

:

: 9

Select *

From Passengers

Where Pname Like '____' ,

.

Like %

.

Like -

: Order By

:

Order by

5

:10

Select * From Passengers

Where PNo > 5

Order By PName

5

:10

Select * From Passengers

Where PNo > 5

Order By PName desc

5

: 11

. (

)

Select * From Passengers

Where PNo > 5

Order By PName ,Nationality

: SQL

: Select

: Count

1

:12

Select Count(*)

From Trips

Where GoFrom = ' ' ,

Count(*)

Select

Select Count(*) as Total

: **Sum** 2

: SQL : 13

Select Sum(CardCount)
From Trips
Where GoFrom = ' ' .

: **Avg** 3

: 14

Select Avg(CardCount)
Form Trips

: **Max** 4

CardCount : 15

Select Max(CardCount)
From Trips

: **Min** 5

: **Group By**

Select

:

: 16

Select GoFrom ,Count(GoFrom)
From Trips
Group by GoFrom

: 17

Select GoFrom ,Sum(CardCount)
From Trips
Group by GoFrom

Group By

Select

:

: **Having**

Group By

Having

. 10 : 18

Select GoFrom ,Sum(CardCount)
From Trips
Group by GoFrom
Having Sum(CardCount) > 10

Null : 19

Select GoFrom ,Sum(CardCount)

<http://www.alshater.net>

From Trips

Group by GoFrom

Having Sum(CardCount) is not null

:

Where

Select

. Table

:

PassAndTrips Passengers :1

```
SELECT Pname,TripNo,SeatNo,ClassNo
FROM PassAndtrips, Passengers
WHERE PassAndtrips.PNo = Passengers.PNo
```

"

"

)

Passengers.PNo

: Trips Passengers PassAndTrips : 2

:

```
SELECT Pname, Company, GoFrom, SeatNo, ClassNo
FROM Passandtrips, Passengers, Trips
WHERE (PassAndtrips.PNo = Passengers.PNo)
AND (PassAndtrips.TripNo = Trips.TripNo)
```

: Inner join

:

SQL

```
SELECT Pname, TripNo,SeatNo, ClassNo
FROM PassAndtrips
INNER JOIN Passengers
ON (Passengers.PNo = PassAndtrips.PNo)
```

:

SQL

```
SELECT Pname, company, SeatNo, ClassNo
FROM Passandtrips
INNER JOIN Passengers
ON (Passengers.PNo = Passandtrips.PNo)
INNER JOIN Trips
ON (Trips.TripNo = Passandtrips.TripNo)
```

:

SQL

Right Join Left Join Outer Join

1

.

: SQL

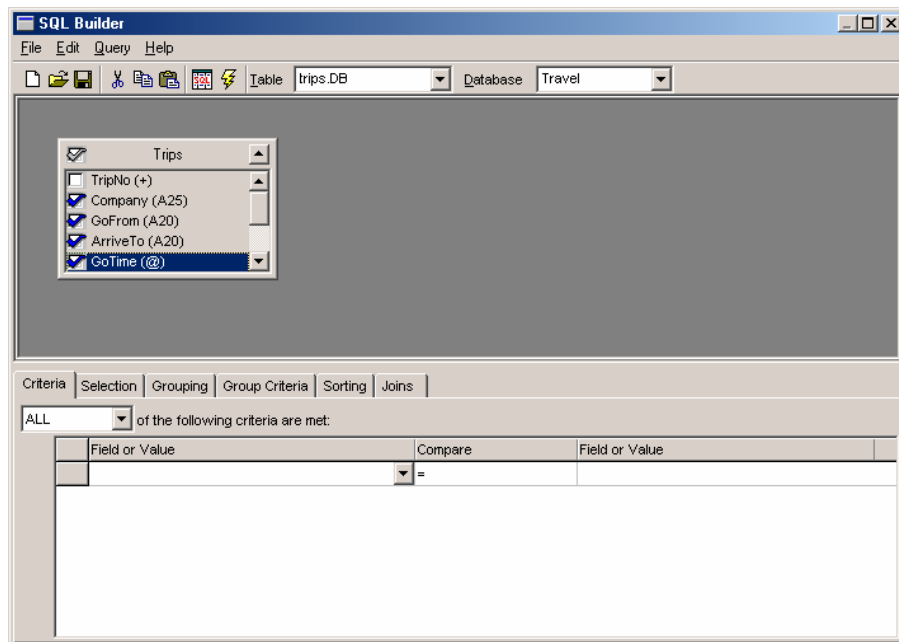
SELECT

1

	Create Table

	Insert
	Update
.	Delete From

.... SQL



: SQL Builder

SQL

SQL

...

SQL Builder
Query

SQL Builder

: 1

Travel

Database

1

Trips.db

Table

2

. ()



Execute SQL

3

SQL

SQL Builder

4

.. Query SQL

: SQL Builder Where : 2

:

SQL Builder 1

Trips.db 2

Field Value Trips.Gofrom : () Criteria 3

Field Value Compare 4

SQL 4

3

Compare = Trips.ArriveTo 1

Selection SQL Builder :

(Field) Trip

(Output Name

(Query DBGrid

SQL

:

SQL Builder Order By

Sorting

(Sorted by) Add

Sorted By ()

.... Z → A A → Z

:Group by ...Having

Group Criteria Grouping Having Group by

: SQL Builder

:

(Query) SQL Builder

Passenegers Table PassAndTrips Travel

:

Passengers PNo

PassAndTrips PNo

) PNo

SQL

```

Trips      Table      Trips      :
...      TripNo
:
(      )
,
Where GoFrom = '
...
ParamName      Where GoFrom = :ParamName
.      Query
:      :
DBGrid      DataSource      Query
Button      Edit
Query1      SQL      ...
SELECT Company, TripNo, GoFrom, ArriveTo, GoTime, ArriveTime, CardCount
FROM Trips
Where GoFrom =:CityName
)      Query1      CityName
. ( Button1
Edit Query1.Params      ...      Query1      Params
Data Type      CityName
. ftString
:      Button1
query1.Close;
query1.ParamByName('cityName').Value := edit1.Text;
query1.Open
( ...      )      Edit1
.
: 2
:
SELECT Company, TripNo, GoFrom, ArriveTo, GoTime, ArriveTime, CardCount
FROM Trips

```

Where TripNo =: TripNumber ;

. ftInteger DataType TripNumber Edit Query1.Params

:

query1.Close;

query1.ParamByName('TripNumber').Value := strtoint (edit1.Text) ;

query1.Open ;

:

SQL

Parameter

SQL Builder

SQL Builder

.

: Query

Locate) Query

Table

FindKey Query (.... First Eof Bof Lookup

.. Query FindNearest

:

: **Employees**

Company

Salary	Hiredate	Department_id	ManagerNo	EmpName	EmpNo
9000	10/1/2002	3	200	Sara	10
12500	06/08/2000	2	300	kala	16
11000	09/01/2001	3	100	Dani	20
14000	05/07/2000	2	100	Wleed	30

:

Database Desktop

:

DataSource

DataSource

DBNavigator

DBGrid

Query

	:	SQL	Query	
QryEmpNo	Query1	Name	:	1
			: SQL	
Select * from employees Where EmpNo = : No				
QryEmpName	Query2	Name	:	2
			: SQL	
Select * from employees Where EmpName =:name				
Query3	Name	() :	3
				... QrySal
Select * from Employees Where salary between :mn and :mx				
QryHireDate	Query4	Name	:	4
Select * from Employees Where hiredate between :b and :e				
Query5	Name	:		5
			QrysumsalaryByDepartment	
Select Department_id ,sum(salary) form employees				
Group by DepartMent_id				

Query6 Name :

6

QryManager:

Select Empname From employees Where managerNo = :mno

:

() 1

QryEmpNo.Close;

DataSource1.DataSet := QryEmpNo ;

QryEmpNo.ParamByName ('No').value := Strtoint (Edit1.text) ;

QryEmpNo.Open;

: () 2

QryEmpName.Close ;

DataSource1.DataSat := QryEmpName ;

QryEmpName.ParamesByName ('Name').Value := Edit2.text ;

QryEmpName.Open ;

() 3

QrySal.Close ;

DataSource1.DataSat := QrySal ;

QrySal.ParamByName(' mn').Value := strtoint (edit3.text) ;

QrySal.ParamByName(' mx').Value := strtoint (edit4.text) ;

QrySal.Open ;

: () 4

QryHireDate.Close ;

DataSource1.DataSat := QryHireDate;

QryHireDate.ParamByName ('b').asdate := datetimepicker1.date;

QryHireDate.ParamByName ('e').asdate := datetimepicker2.date;

QryHireDate.Open ;

: () 5

QrysumsalaryByDepartment.Close ;

DataSource1.DataSat := QrysumsalaryByDepartment;

QrysumsalaryByDepartment.Open ;

: () 6

QryManager.Close ;

DataSource1.DataSat := QryManager;

QryManager.ParamByName ('mno').Value := strtoint (Edit5.text) ;

QryManager.Open ;

While not QryManager.eof Do

Begin

Showmessage (QryManager.fieldByName ('EmpName').Value) ;

QryManager.Next ;

End;

Ok

:Access

New File " " ..New " " File " " -

•



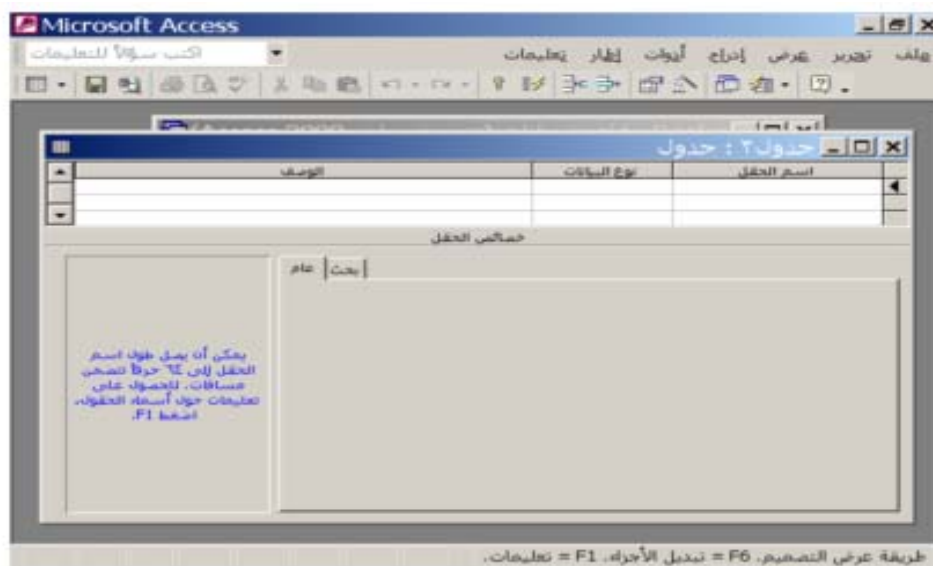
..

•

• • • •

Access 97 Access 2000 Access XP





		ID
		Author

ID

Indexed "

Author

Authors

..

20

50

30

..

Ctrl+S

.OK

:

VB

Authors

..

:

..

..

	1
	2
	3
	4
	5
	6
	7
	8
	9

:

		ID
		Book
		AuthorID

:

Books

AuthorID	Book	ID
1		1
1		2
1		3
2		4
2		5
2		6
3		7
4		8
4		9

5		10
5		11
5		12
6		13
6		14
6		15
7		16
8		17
9		18

:

Referential

:

..

Integration

"

"

..Relationships "

"

Tools

:

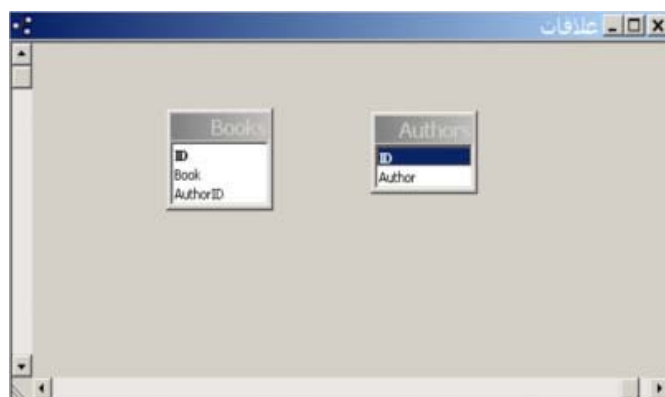


..

..

"

:



AuthorID

ID



Enforce Referential Integrity

Integrity

Cascade Update Related

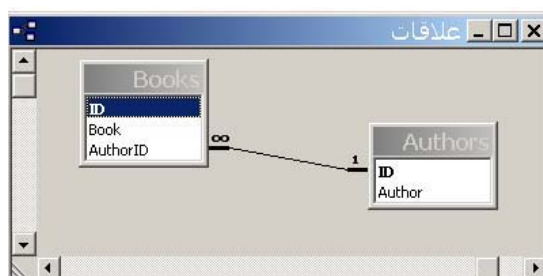
:Fields

AuthorID

10 1 ()
.10

ID

:Cascade Delete Related Fields



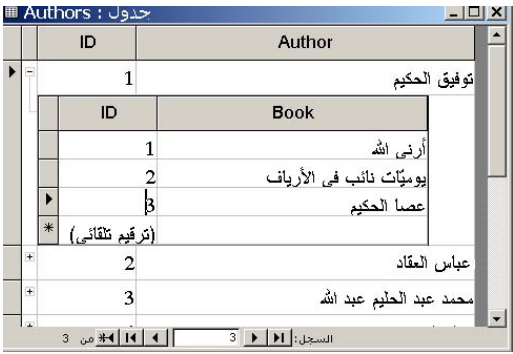
" "
"+

" - "

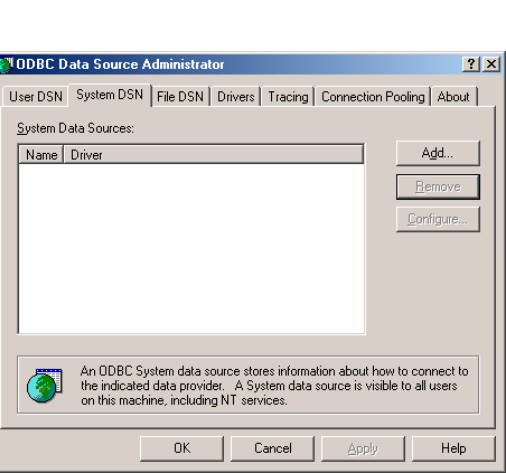
" + "

.. ()

" - "



AuthorID ()



BDE

Paradox

DataBaseName Table

Database Alias

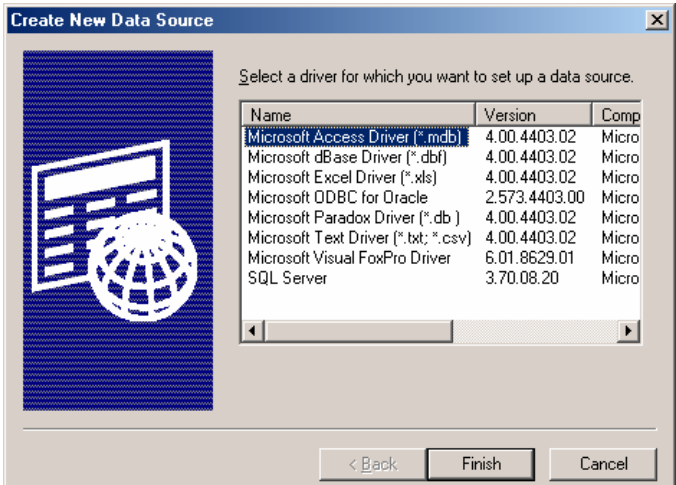
Desktop

Table

1

Adminstrative Tools →ODBC Data Sources

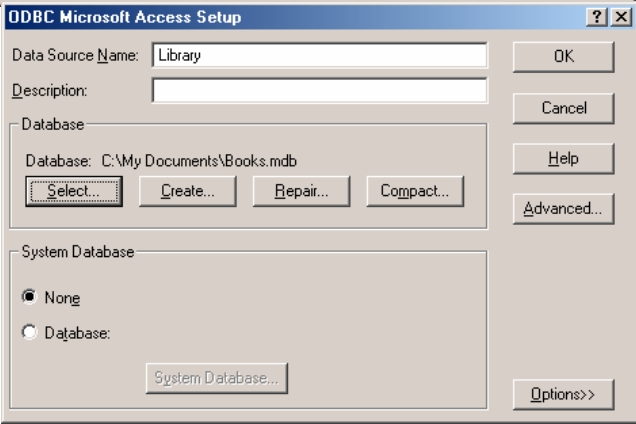
System DNS



: Add 2

Microsoft Access Driver (*.mdb)

. Finish



Data : 3

Library Source Name

(Books.mdb)

Select

Ok

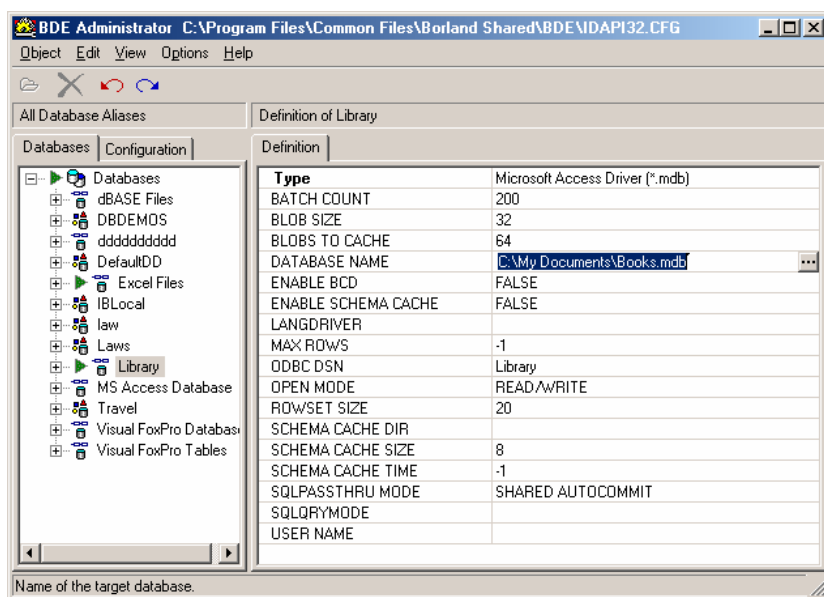
. ODBC Data Source

BDE Administrator

4

Start → Program → Borland Delphi → BDE Administrator

Alias



Library

Database

Definition

Database Name

Books.mdb

...

BDE Administrator

Yes

Query Table

Library

5

New

Paradox

Alias

Standard

Object

Borland

: ADO

BDE

ADO

SQL Server Oracle

: ADO

:

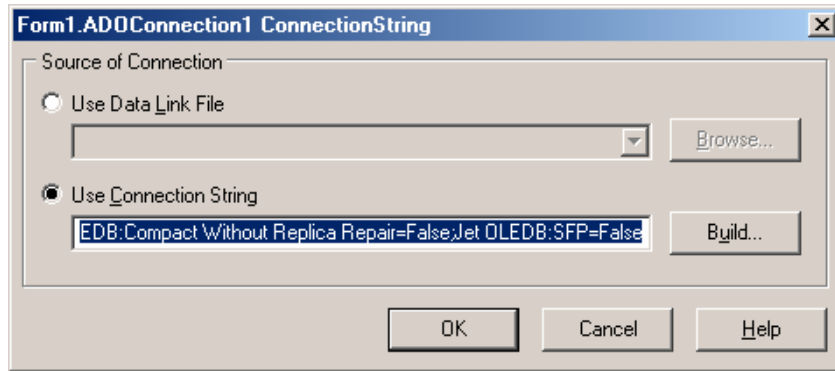
:

DataSource

ADO

ADOTable ADOConnection

. DBNavigator DBGrid

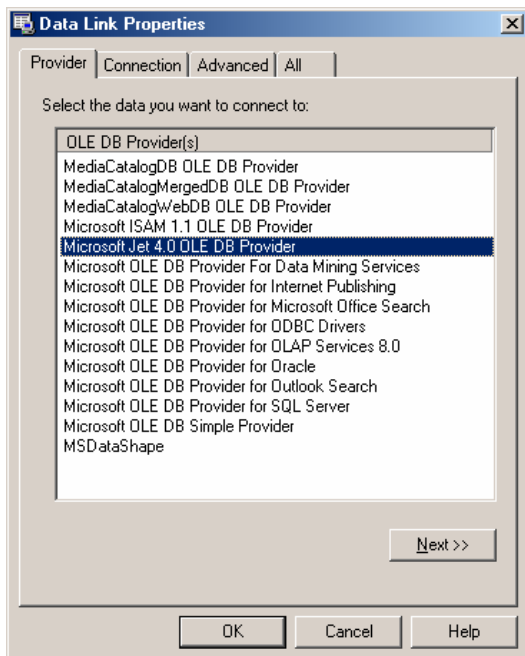


: ADOConnection

Use Connection String

Build

:



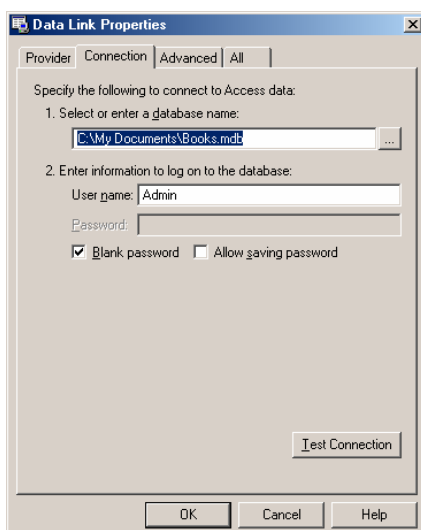
Microsoft Jet 4.0 OLE Db Provider

. Next

Oracle

:

Microsoft OLE DB Provider for Oracle



Connection

Next

Select Or Enter Database Name

Ok

```

:
ADOTable1
Authors      TableName      ADOConnection1      Connection
True      Active
ADOTable1      DataSource      DataSet
. DataSource1      DBNavigator1      DBGrid1      Datasource
.
ADO      SQL      SQLConnection
Query      Table
```

:

:

1

...

ss	City	Country	Web	Email	Fax	Mobil	WPhon	HPhon	LName	FName	Num
)	A(15)	A(15)	A(40)	A(40)	A(15)	A(15)	A(15)	A(15)	A(15)	A(15)	+

Num

.

.

:

Data

C

MyPhon

1

) Data

Data

. Paradox

BDE

C:\MyPhon\Data

Myphon

Alias

2

. Database Desktop

Administrator

Paradox

Database Desktop

3

:

Define

Table properties

Secondary Indexes

Ok

Lname Fname

. FNameIndex

....

FName Lname

Define

. LNameIndex

MyPhon

Alias

Phonebook

4

. C:\MyPhon\Data

:

:

2

)

(

)

(

:

)

:

. (

:

Memo

:

Memo

Alpha

برنامج دليل الهاتف

الاسم	الكنية	هاتف المنزل	هاتف العمل	الهاتف الجوال	البريد الالكتروني	موقع الانترنت
أسامة	معراري	٥٥٥٧٢٧				
بشار	الروح	٢٥٨٨٥٢				
بشار	طراحي					
حمزة	حمزة	٢٤٥٥٨٥٥				
عبد السلام	قلعه جي					
محمد خالد	ناصر آغا	٢٢٢٦٥٢٤	٢٥٠٢		mkna@gawab.com	http://Delphiat.tripod.com
مهند	خربوطلي	٢٢٢٥٢٤٤	٠٩٢٧٨٩٧٧٧			

خيارات

إدخال

طباعة

طباعة الدليل

حوّل

بحث عن رقم الهاتف

بحث

ترتيب حسب

الاسم

الكنية

بحث حسب الكنية

:

: 1

bdRightToLeft	BiDiMode
	Caption
470	Hieght
750	Width
poScreenCenter	Position

: Win32 TabControl 2

alTop	Align
True	MultiLine
tsButtons	Style
	Tabs
True	HotTrack

: Standard Panel 3

alClient	Align
bvLowered	Bevelinner
bvRaised	BevelOuter
"	Caption

: Table 4

MyPhone	DatabaseName
Phonebook	TableName
FnameIndex	IndexName
True	Active
Num	
.	DisplayLabel

: Tabcontrol : DataSource 5

Table1	Dataset
--------	---------

: DbGrid 6

alClient	Align
DataSource1	DataSource
+ Titel	
taCenter	Aligment

: Panel : GroupBox 7

	Caption
--	---------

GroupBox1 : RadioButton1 8

	Caption
True	Checked
RBTName	Name

GroupBox1 : RadioButton2 9

	Caption
RBTLname	Name

: GroupBox1 : Edit1 10

"	Text
---	------

GroupBox1 : Button 11

	Caption
BtnSearch	Name

:

: RBTName

table1.IndexName := 'FnameIndex';

btnSearch.Caption := ' ';

: RBTLname

table1.IndexName := 'LnameIndex';

btnSearch.Caption := ' ';

Tabcontrol

Tabcontrol1 OnCahnge

:

if RBTName.Checked then

table1.Filter := 'fname = ' + quotedstr(tabcontrol1.Tabs[tabcontrol1.tabindex]+ '*') else

table1.Filter := 'Lname = ' + quotedstr(tabcontrol1.Tabs[tabcontrol1.tabindex]+ '*')

...

:

(

Edit1

: BtnSearch

Filter

```
table1.Filtered := false;
table1.FindNearest([edit1.text]);
```

.....

:

WPhon

HPhon

Mobil

:

: Panel

: GroupBox

1

	Caption
--	---------

Edit2

2

"	Text
---	------

: Button

3

	Caption
BtnPhSearch	Name

:

```
Table1.Filtered := false;
if not Table1.Locate('HPhon',edit2.text,[]) then
if not Table1.Locate('WPhon',edit2.text,[]) then
if not Table1.Locate('Mobil',edit2.text,[]) then
showmessage( ' ' );
```

....

Main.pas

C:\MyPhon

:

. MyPhone

:

: Panel

: GroupBox

	Caption
--	---------

Caption Button

Data control

:

Memo

DBGrid

. (ReadOnly DBGrid) DBGrid

:

bdRightToLeft	BiDiMode
	Caption
poScreenCenter	Position
DataEnter	Name

Table1

Uses

Main

:

. DataEnterU

DBNavigator

Label

DBEdit

:

(Label

)

. Form1.DataSource1

DataSource

. Label

DataField

DBEdit

:

DataEnter.ShowModal ;

DBGrid

DBGrid1

OnDbClick

DataEnter.ShowModal ;

:

QReport

:

: 7

QReport

Rave

:

7

QReport

Compponant → install package → add

. Delphi7

Bin

dclqrt60.bpl

:

Uses

Main

. Printform Name

Table1

:

Qreport

QuickRep

HasDetail HasColumnHeader : Band

True

. HasPagefooter HasPageHeader

. Form1.DataSource1

Dataset

"

" Caption

Page Header

QRlabel

:

QRlabel

Column Header

Dataset

QRDbText

Detail

... Page Number

data

QRSysData

Page Footer

. PrintUnit

Preview

QUickRep1

:

Printform.QuickRep1.Preview

```

:

.

:

1

Edit1

( Enter )

: Edit1 OnKeyPress :

if key = char( VK_Return ) then
btnsearch.Click ;

Enter VK_Return

F1..F12 ( Virtual Key )

( ... End Delete Caps lock Tab

. Windows.VK_

:

:

If key = #13 then btnsearch.Click ;

# Enter VK_Return 13

S := S:=#89#111#117 :

'You'

:

If key = #13 then BtnSearchClick (Sender);
) BtnSearch Click

Implementation Type BtnSearchClick

....

Edit2 2

:

const s = ['0','1','2','3','4','5','6','7','8','9','p',char(VK_back)];
begin
if not ( key in s )
then key:= char(vk_capital)

```

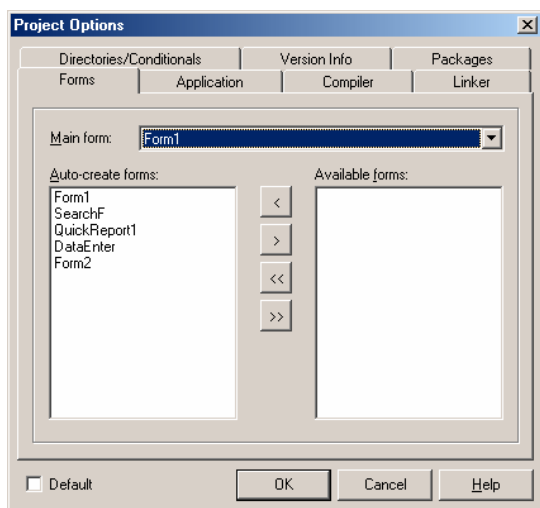
```

← VK_back
Caps Lock Vk_Capital
. Caps Lock
DBEdit 3
Enter Tab
: DBEdit1 OnKeyPress
If key = #13 then DBEdit2.SetFocus ;
: OnKeyPress
If key =#13 then dbedit3.SetFocus ;
.
( ) SetFocus
Button1.SetFocus
. Space Enter
: 4
MyPhone.Dpr Project → View Source
Begin Uses
Application.Initialize;
Application.CreateForm(TForm1, Form1);
Application.CreateForm(TDataEnter, DataEnter);
Application.CreateForm(TForm2, Form2);
Application.Run;
Form1 Application.CreateForm ( TFom1,Form1)
Form1 Main.pas Interface TForm1
.... CreateForm
Application.CreateForm ( TFom1,Form1)
. ( ) 1
.... 2
. 3
. Form1 OnCreate 4
:
: Form1 1
.

```

: DataEnter 2

: Form2 3



Avialable Form

>

Project → Options
Main Form Forms
Auto-Create Forms
Available Form

Show

ShowModal

```
Dataenter := TDataEnter.Create(application);
Try
DataEnter.Showmodal;
Finally
DataEnter.Release ;
end;
```

```
Var
) TDataEnter DataEnter
Delphi Create ( DataEnterU.pas Interface
Application
```

DataEnter.Release

Release

DataEnter.Free

ShowModal

Show

:

:

DataEnter

OnClose

action := Cafree;

DataEnter := nil;

: ()

If DataEnter = nil then

DataEnter := TDataEnter.Create(application);

DataEnter.Show;

()

OnClose

:

Action

	CaNone
	CaFree
Show FormStyle := fsNormal	CaHide
fsMDIChild	CaMinimize

DataEnter

(Null)

DataEnter = Nil

OnClose

:

: Windows Registry

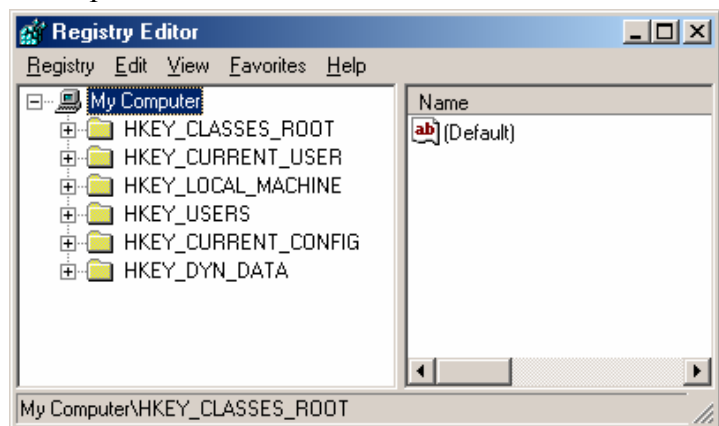
Windows

User.dat System.dat

. Ok

Regedit

Run



+

Root key

Registry → Export

```

)
:
: HKEY_CLASSES_ROOT
(
... .Doc .jpg
: HKEY_CURRENT_USER
.....
: HKEY_LOCAL_MACHINE
( Driver )
....
: HKEY_USERS
( ..
.
: HKEY_CURRENT_CONFIG
.
Windows NT ) : HKEY_DYN_Data
. (
)
( WINDOWS Me
    
```

```

( .....
Windows Registry
800 Windows 2000 Registry
: Registry
.
)
:
. (
[HKEY_LOCAL_MACHINE\SOFTWARE\Microsoft\Windows\CurrentVersion]
. ( Regedit ) RegisteredOwner
Edit1
USES Registry

```

```

Var reg:tregistry ;
Begin
reg:= tregistry.Create ;//
try
reg.RootKey := HKEY_LOCAL_MACHINE ;//
reg.OpenKey('SOFTWARE\Microsoft\Windows\CurrentVersion',false) ;
edit1.text := reg.ReadString('RegisteredOwner');//
reg.CloseKey ; //
Finally
reg.Free ;//
end;

```

OpenKey
.True

```

:
Var reg:tregistry ;
Begin
reg:= tregistry.Create ;//
try
reg.RootKey := HKEY_LOCAL_MACHINE ;//
reg.OpenKey('SOFTWARE\Microsoft\Windows\CurrentVersion',false) ;

```

```
reg.WriteString('RegisteredOwner',edit1.Text ); //
```

```
reg.CloseKey ; //
```

```
Finally
```

```
reg.Free ; //
```

```
end;
```

: : 2

:

:

IndexBy

```
HKEY_CURRENT_USER\Software\MyPhone
```

1

.

.

"

Form1

:

```
Var reg:tregistry ;
```

```
Begin
```

```
reg:= tregistry.Create ;
```

```
try
```

```
reg.RootKey := HKEY_CURRENT_USER ;
```

```
reg.OpenKey('SOFTWARE\MyPhone',True ) ;
```

```
if button4.Caption = ' ' Then
```

```
reg.WriteInteger ('IndexBy',1 )
```

```
else reg.WriteInteger ('IndexBy',0 )
```

```
reg.CloseKey ;
```

```
Finally
```

```
reg.Free ;
```

```
end;
```

WriteInteger

OpenKey

1

IndexBy

:

```
RBTLname
```

```
reg:= tregistry.Create ;
```

```
try
```

```
reg.RootKey := HKEY_CURRENT_USER ;
```

```
reg.OpenKey('SOFTWARE\MyPhone',True) ;
```

```
if reg.ReadInteger ('IndexBy') = 1 then begin
```

<http://www.alshater.net>

RBTLname.Checked := true;

RBTLnameClick(Sender);

button5.Caption := ' ' ;

end

reg.CloseKey ;

Finally

reg.Free ;

end;

1

IndexBy

.

.

:

)

.(

: Windows API

.DLL

)

Api

Hard Disk

.

:

: Windows

1

:

ExitWindowsEx()

:

ExitWindowsEx(ewx_ShutDown,0) ;

)

.

(

. ExitWindowsEx(ewx_Reboot,0) :

:

2

:

LoadKeyboardLayout('00002801',klf_activate) ;

OnCreate

Edit

00002801

. 00000409

. Form1

OnCreate

:

:

OnEnter

LoadKeyboardLayout('00000409 ',klf_activate) ;

OnExit

LoadKeyboardLayout('00002801',klf_activate) ;

: **MessageBox**

MessageDlg ShowMessage

Api

MessageBox

:

MessageBox (0,' ', ' ', MB_Ok) ;

()

Ok

:

If MessageBox (0,' ', ' ', Mb_YesNo) = IDYES

then

Form1.color := clred;

. F1

MessageBox

:

Thandle

Handle

Form

)

(.... Edit

Api

:

ListBox

```
var h:THandle;
p:pchar;
begin
getmem(p,250);
h:= gettopwindow ( getdesktopwindow) ;
getwindowtext(h,p,250);
listbox1.Items.Add(p);
while h > 0 do begin
h:= getnextwindow( h,gw_hwndnext);
getwindowtext(h,p,250);
listbox1.Items.Add(p) ;
end;
freemem(p,200);
end;
```

```

) Pchar      P      THandle      h
( Pchar      Api
200      GetMem( p,200)
: GetDesktopwindow
GetTopWindow

250      h      p      :getwindowtext(h,p,250)
```

```
h      : GetNextWindow( h, gw_hwndnext)
. Nil
```

```
: 2
```

```
:
```

```
: Private 1
```

```
hTaskBar: THandle;
```

```
: OnCreate 2
```

```
hTaskBar := FindWindow('Shell_TrayWnd', nil);
```

:

3

ShowWindow(hTaskBar, SW_HIDE);

.

:

4

ShowWindow(hTaskBar, SW_SHOW);

.

:

F1

1

Windows

Windows Api

2

Windows.pas

. Windows Api

Windows Api

3

. Microsoft Visual Studio

MSDN Library

:

: (Add new omponent)

:

BDE

TLabel

object-oriented programming

Delphi

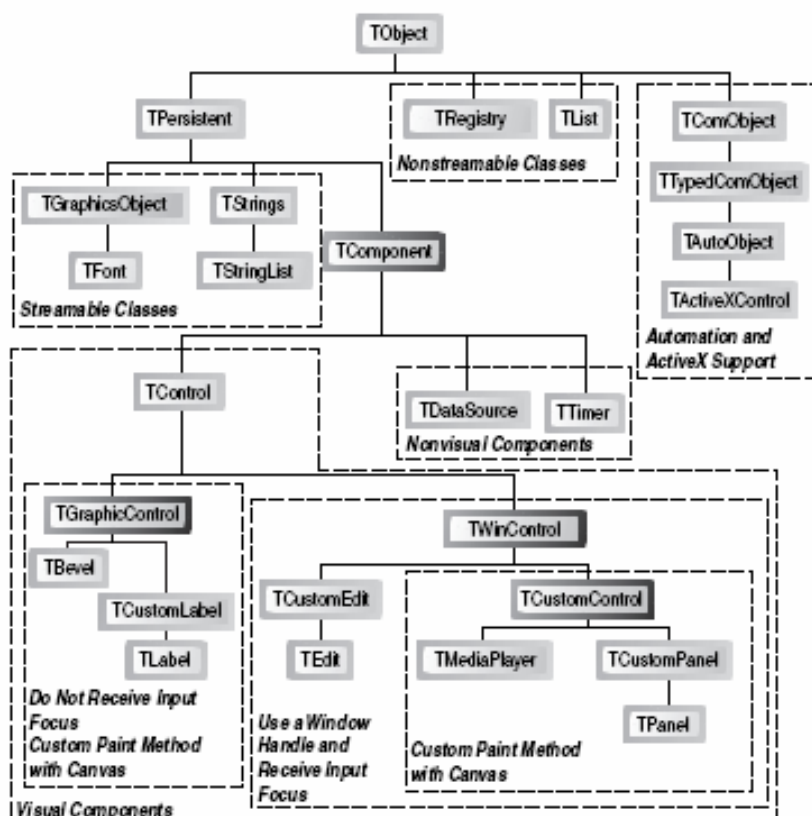
(

()

Tobject

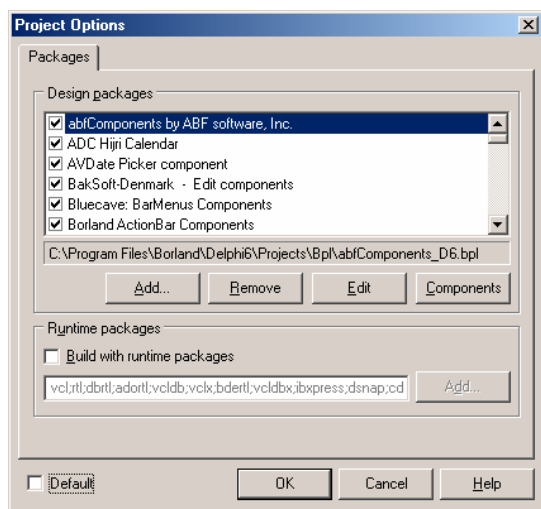
Tobject

:



:

:



Install Package

Component

Add

.bpl

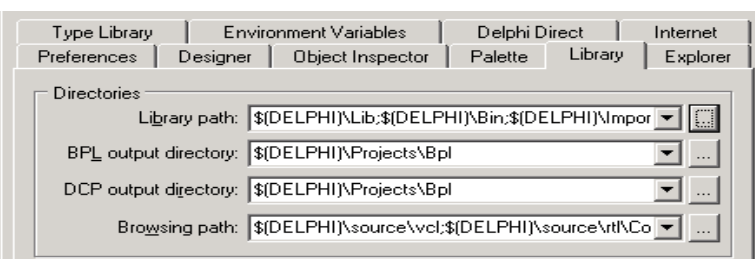
. Ok

)

TIBEAntialiasButton02_all

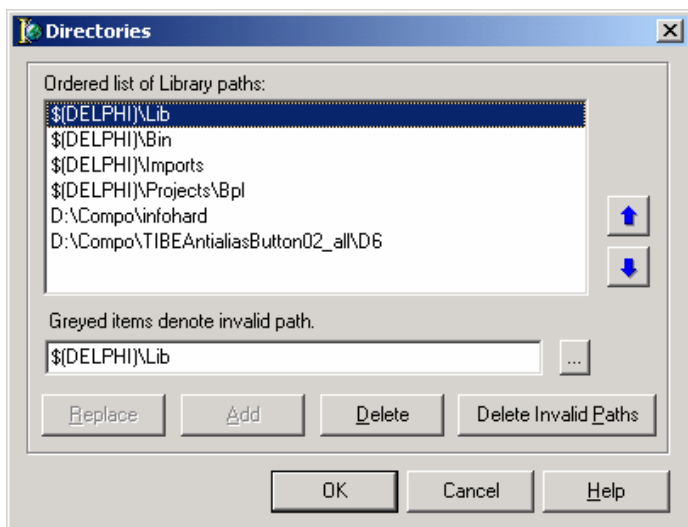
.

<http://www.ibe-software.com>



Tools → Environment Options

Library



Library path

:

(...)

(pas Dcu bpl)

Ok Add

)

(Demo

: .Dpk 2

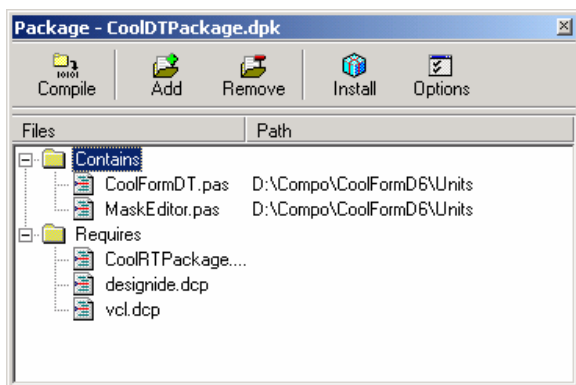
(Delphi Package) .Dpk

:

: ok .Dpk

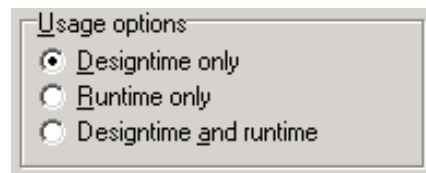
File → Open

Install



option

Description



. Install

: Pas

3

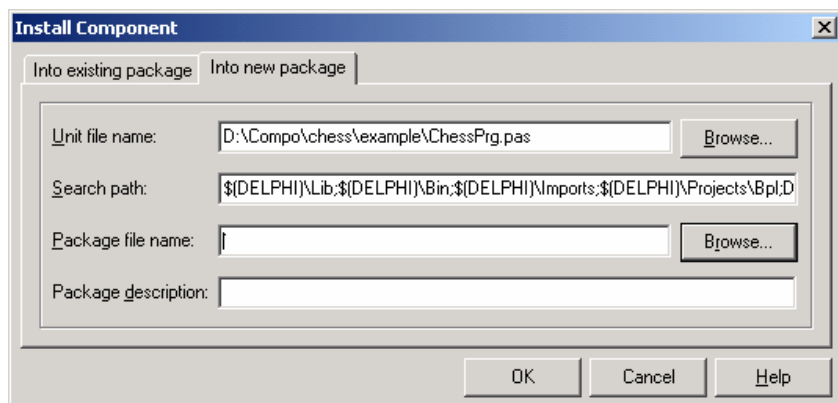
File

: →Open

Component → Install

Component

Into New package



ok

Package file name

. Install

(Setup)

4

:

.Dpk

Package

Unit

Package

Install

)

Bpl

. (OCX DLL

Bpl

Ocx .DLL

.Exe

:

:

:

1

:

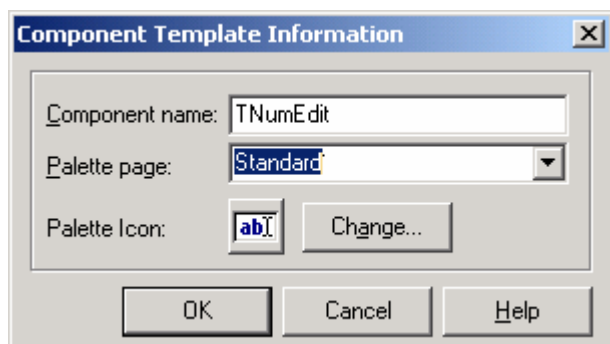
: OnKeyPress

Edit

```
const s= [ '1','2','3','4','5','6','7','8','9','0',char(Vk_back)];
begin
if not (key in s ) then
key := char(VK_CAPITAL )
end;
```

Component → Create Component Template

Edit1



:

Component name

Palette Page

(TNumEdit)

)

(

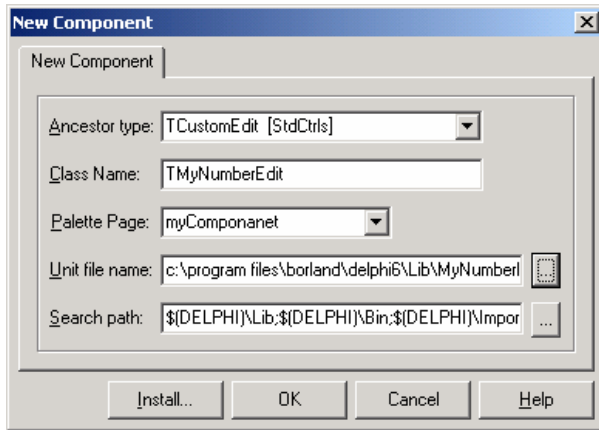
. Change

Ok

:

2

File → Close All



: Component → New Component

:

TCustomEdit Ancestor type

.

Class Name

TMyNumberEdit (T)

Palette Page

. (MyComponent)

:

MyNumEdit

ok

```
unit MyNumberEdit;
interface
uses
  Windows, Messages, SysUtils, Classes, Controls, StdCtrls;
type
  TMyNumberEdit = class(TCustomEdit)
  private
    { Private declarations }

  protected
    { Protected declarations }
  public
    { Public declarations }
  published
    { Published declarations }
  end;
procedure Register;
implementation
procedure Register;
begin
  RegisterComponents('Standard', [MyNumberEdit]);
end;
end.
```

:

TMyNumEdit TMyNumberEdit = class(TCustomEdit) 1

TEdit TCustomEdit) TEdit TCustomEdit

. (

: protected 2

. () ()

.MyNumberEdit

Public

: published 3

... Event (Object inspector)

: procedure Register 4

RegisterComponents('Standard', [MyNumberEdit]);

. Standard MyNumberEdit

About

About

: Public

constructor Create(AOwner: TComponent); override;

Create

Constructor

. Procedure

Constructor

: Published

Property About : string Read FAbout Write Fabout;

Ctrl + Shift + C

()

. private

String

FAbout

String

About

. Write FAbout

Read FAbout

Ctrl + Shift + C

Constructor

Inherited

Implementation

. TCustomEdit

: Inherited

FABout := 'M.Khaled Nasser Agha';

. MyNumberEdit

Component → install component

Editnumber

into new package

Install

ok

Package File Name

) Standard

Compile

(

About

Events

Num

. (TEdit

Text

)

File → ReOpen

Editnumber.dpk

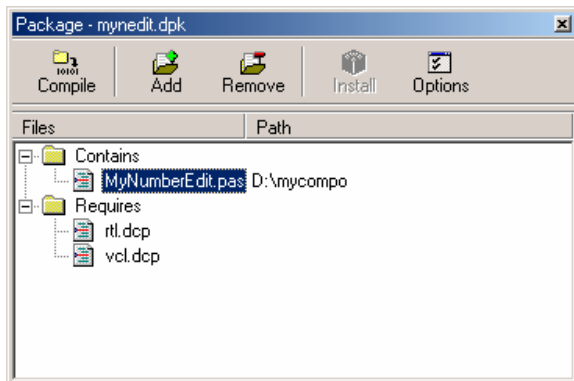
MyNumberEdit.pas

Compile

... Standard

TMyNumberEdit

. Published



property Num: Extended read FNum write SetFNum;

FNum

Ctrl + Shift + C

Implementation

SetNum

Private

:

FNum := Value :

SetNum

Text := floattostr(value);

Compile

(

)

Standard

MyNumberEdit

Num

Enter

. MyNumberEdit.pas

EditNumber.dpk

TCustomEdit

KeyPress

: Public

procedure KeyPress(var Key: Char); override;

Inherited

Ctrl + Shift + C

TCustomEdit

KeyPress

:

Implementation

<http://www.alshater.net>

```
const NumberChar = [ '1','2','3','4','5','6','7','8','9','0','.'];
```

```
      : Inherited      KeyPress
```

```
If not (key in NumberChar ) Then key := char(VK_Capital);
```

```
      .      EditNumber.dpk      Compile
```

```
      Edit
```

```
      Editnumber.dbk
```

```
      :      Published
```

```
property BiDiMode;
```

```
property CharCase;
```

```
property Color;
```

```
property OnEnter;
```

```
property OnKeyPress;
```

```
property OnKeyDown;
```

```
property OnKeyUp;
```

```
      Compile
```

```
      : MynumberEdit.pas
```

```
unit MyNumberEdit;
```

```
interface
```

```
uses
```

```
  Windows, Messages, SysUtils, Classes, Controls, StdCtrls;
```

```
type
```

```
  TMyNumberEdit = class(TCustomEdit)
```

```
  private
```

```
    FAbout: string;
```

```
    FNum: Extended;
```

```
    procedure SetFNum(const Value: Extended);
```

```
    { Private declarations }
```

```
  protected
```

```
    { Protected declarations }
```

```
  public
```

```
    constructor Create(AOwner: TComponent); override;
```

```
    procedure KeyPress(var Key: Char); override;
```

```
    { Public declarations }
```

```
  published
```

```
    Property About : string Read FAbout Write Fabout;
```

```
    property Num: Extended read FNum write SetFNum;
```

```
    property BiDiMode;
```

```
    property CharCase;
```

```
    property Color;
```

<http://www.alshater.net>

```

property Enabled;
property Font;
property ParentBiDiMode;
property ParentColor;
property ParentCtl3D;
property ParentFont;
property PasswordChar;
property ReadOnly;
property ShowHint;
property TabOrder;
property TabStop;
property Visible;
property OnChange;
property OnClick;
property OnDblClick;
property OnEnter;
property OnExit;
property OnKeyDown;
property OnKeyUp;
    { Published declarations }
end;
procedure Register;
    const NumberChar = [ '1','2','3','4','5','6','7','8','9','0','.'];
implementation
procedure Register;
begin
    RegisterComponents('Standard', [TMyNumberEdit]);
end;
{ TMyNumberEdit }
constructor TMyNumberEdit.Create(AOwner: TComponent);
begin
    inherited;
    FABout := 'M.Khaled Nasser Agha';
end;
procedure TMyNumberEdit.KeyPress(var Key: Char);
begin
    inherited;
    if not (key in NumberChar ) then
key := char(VK_Capital);
end;
procedure TMyNumberEdit.SetFNum(const Value: Extended);
begin
    FNum := Value;
    Text := floattostr(value);
end;
end.

```

: Drag and Drop :**: Sender 1**

Event

Sender

. TObject Sender

procedure TForm1.Button1Click(Sender: TObject);

Button1

. Button1

:

: Button

: Button1 1

If sender = Button1 Then Showmessage (' You Click On Button1 ');

If sender = Button2 Then Showmessage (' You Click on Button2 ');

OnClick

Event

Button2

2

. Button1Click

.

: 2

: ListBox

Label

: 1

ListBox

Label

Label

Label

ListBox1

. dmAutomatic

DragMode

: ListBox1

OnDragOver

Accept := Source is Tlabel;

:

ListBox1DragOver

. ListBox1

: Sender

. Label

: Source

.

: X,Y

.

: State

)

True

: Accept

(

```

        . TLabel          Source          True          : Source Is TLabel
                                :
                                OnDragDrop
( sender as Tlistbox ).color := (Source as TLabel ).color ;
    Tlistbox          Sender          Sender As TListBox
.

        . Source As TLabel
        ListBox1          Label
                                : 2
        Picture          Image
Image1          dmAutomatic          DragMode
.
                                :          Form1          OnDragOver
accept := Source is Timage;

                                :          OnDragDrop
(Source as Timage).Top := y;
(Source as Timage).Left := X;

        Image1
        .ListBox
    
```

```

:
TImage      TForm      Canvas
.
:

x,y      Form1.Canvas.MoveTo(x,y)

. Form1      OnMouseDown
x,y      Form1.Canvas.LineTo(x,y)

. Form1      OnMouseUp

.
OnMouseMove

:

Form1.Canvas.LineTo(x,y);

:
:      Var

var
Form1: TForm1; Drawing : boolean = false;
:      OnMouseDown

Drawing := True;
Canvas.MoveTo(x,y);
:      OnMouseMove
if Drawing Then Form1.Canvas.LineTo(x,y);
:      OnMouseUp
Drawing := false;

.
OnMouseMove

Integer      X,y      TPoint
:      private
Origin : TPoint;

```

```

: OnMouseDown
Drawing := True; Canvas.MoveTo(x,y);
Origin := point(x,y);

```

```

: OnMouseMove
If Drawing then Begin
Canvas.MoveTo(origin.X,origin.y) ; Form1.Canvas.LineTo(x,y);
end;

```

```

: OnMouseUp
Canvas.MoveTo(origin.X,origin.Y);
canvas.LineTo(x,y);
Drawing := false;

```

```

OnMouseMove OnMouseUp
OnMouseMove
:
Tpoint Movept Private
OnMoseMove
Origin,Movept :Tpoint;
: OnMouseDown
Movept := Point(x,y);
: OnMouseMove
If Drawing then begin
canvas.Pen.Mode := pmNotXor;
canvas.MoveTo(origin.X,origin.y) ;
Canvas.LineTo(Movept.x,movept.y); } 1
Canvas.moveto(origin.X,origin.y) ;
Canvas.LineTo(x,y); } 2
end;
movept := point(x,y);
Canvas.Pen.Mode := pmCopy;
end;

```

```

pmNotXor pen Mode
PmCopy

```

)

1

)

(Movept

(

pmNotXor

mode

2

OnMouseMove

(

)

:

```
If Drawing then begin
  canvas.Pen.Color := form1.Color ;
  canvas.MoveTo(origin.X,origin.y) ;
  Canvas.LineTo(Movept.x,movept.y);
  canvas.Pen.Color := clblack;
  canvas.moveto(origin.X,origin.y) ;
  Form1.Canvas.LineTo(x,y);
end;
movept := point(x,y);
```

...

:

:

New Button

Toolbar

.

. (Painting

Gragh

)

:

Image Editor

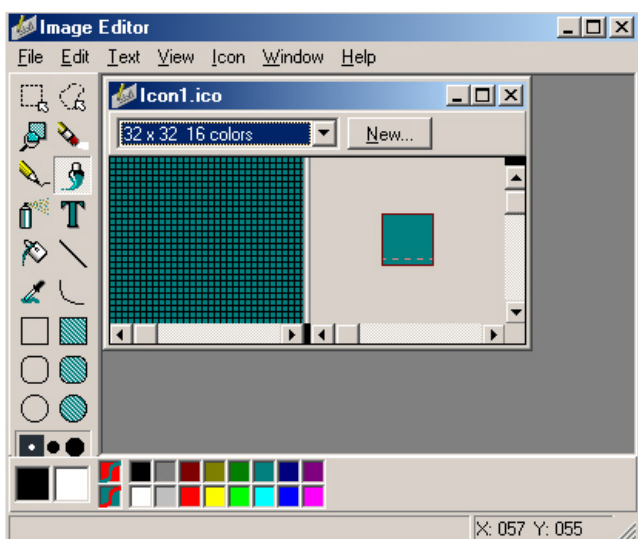
Tools

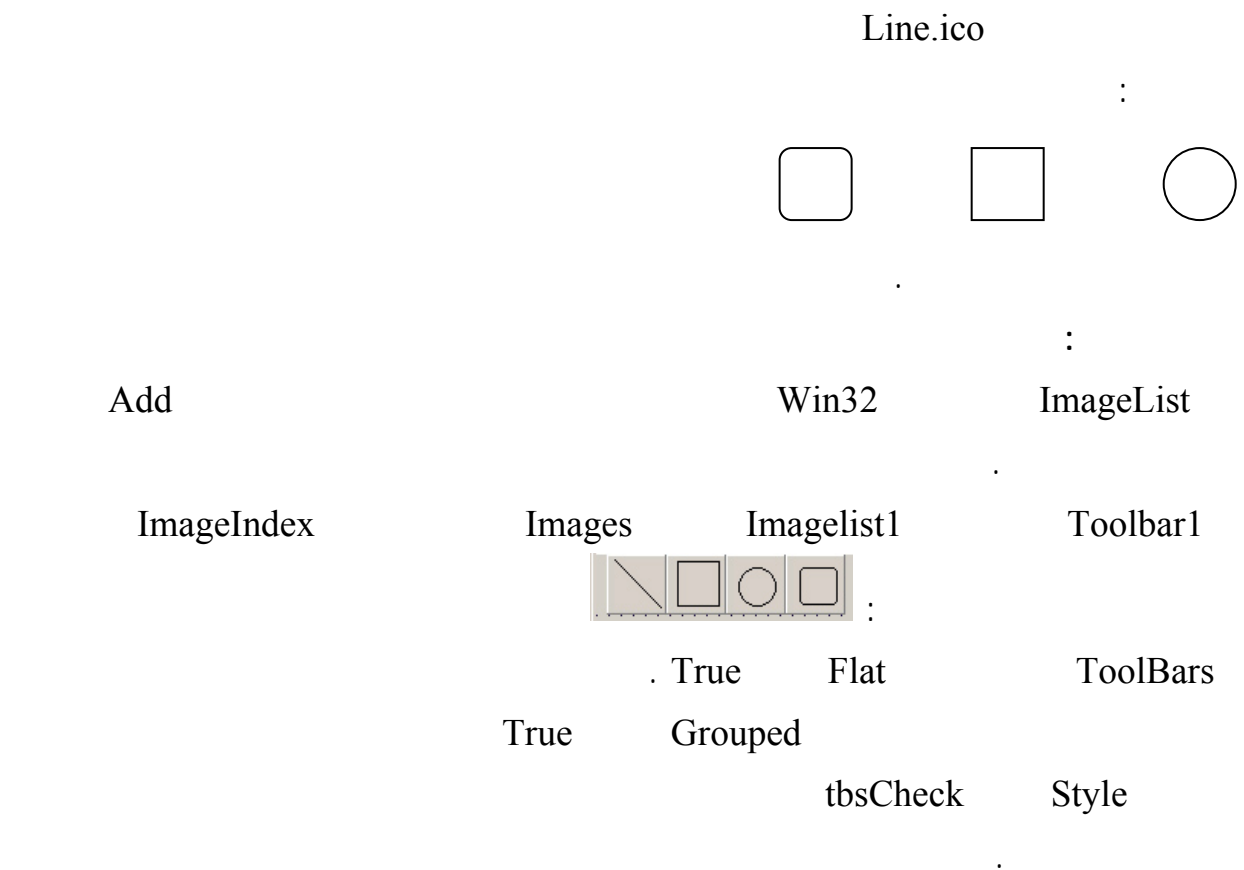
:

File → New → icon File

16 Color Small Icon

Icon1.ico





Type

: Gragh

type

TDrawingTool = (dtLine, dtRectangle, dtEllipse, dtRoundRect);

TForm1 = class(TForm)

:

:

const

dtLine = 0;

dtRectangle = 1;

dtEllipse = 2;

dtRoundRect = 3;

: Private

DrawingTool: TDrawingTool;

:

DrawingTool := dtLine;

:

DrawingTool := dtRectangle;

:

<http://www.alshater.net>

DrawingTool := dtEllipse;

:

DrawingTool := dtRoundRect;

.

DrawingTool

OnMouseUp

DrawingTool

case DrawingTool of

dtLine:

begin

Canvas.MoveTo(Origin.X, Origin.Y);

Canvas.LineTo(X, Y)

end;

dtRectangle: Canvas.Rectangle(Origin.X, Origin.Y, X, Y);

dtEllipse: Canvas.Ellipse(Origin.X, Origin.Y, X, Y);

dtRoundRect: Canvas.RoundRect(Origin.X, Origin.Y, X, Y,
(Origin.X - X) div 2, (Origin.Y - Y) div 2);

end;

Drawing := False;

End;

OnMuseMove

:

if Drawing then

begin

Canvas.Pen.Mode := pmNotXor;

case DrawingTool of

dtLine: begin

Canvas.MoveTo(Origin.X, Origin.Y);

Canvas.LineTo(MovePt.X, MovePt.Y);

Canvas.MoveTo(Origin.X, Origin.Y);

Canvas.LineTo(X, Y);

end;

dtRectangle: begin

Canvas.Rectangle(Origin.X, Origin.Y, MovePt.X, MovePt.Y);

Canvas.Rectangle(Origin.X, Origin.Y, X, Y);

end;

dtEllipse: begin

Canvas.Ellipse(Origin.X, Origin.Y, X, Y);

Canvas.Ellipse(Origin.X, Origin.Y, X, Y);

end;

dtRoundRect: begin

Canvas.RoundRect(Origin.X, Origin.Y, X, Y,

(Origin.X - X) div 2, (Origin.Y - Y) div 2);

Canvas.RoundRect(Origin.X, Origin.Y, X, Y,

<http://www.alshater.net>

```
(Origin.X - X) div 2, (Origin.Y - Y) div 2);
end;
end;
end;
MovePt := Point(X, Y);
Canvas.Pen.Mode := pmCopy;
end;
```

:

: (**Rectangle**)

.

: (**Ellipse**)

:

: (**RoundRect**)

)

.

(

:

...

.

:

. False

Visible

Win32

Toolbar

. New Button

Toolbar2

ImageList1

)

C:\Program Files\Borland\Delphi6\Demos\Doc\Graphex

:

solid.bmp - dashed.bmp - dotted.bmp - dashdot.bmp - dashdot2.bmp - clear.bmp

:



tbsCheck

Style

True

Grouped

New Separator

toolbar1

:

ImageList1

<http://www.alshater.net>
pen.bmp - brush.bmp

```

                                tbsCheck      Style
                                :
toolbar2.Visible := not toolbar2.Visible ;

                                .
                                : Toolbar2
canvas.Pen.Style := pssolid;
                                :
canvas.Pen.Style := psDash;
                                :
canvas.Pen.Style := psdot;
                                :
canvas.Pen.Style := psdashdot ;
                                :
canvas.Pen.Style := psdotdot ;
                                :
canvas.Pen.Style := psclear ;
                                :

                                :
                                : Tpen
                                . ColorDialog
                                ( Separator )      Toolbar2
                                :

if ColorDialog1.Execute then
    Canvas.Pen.Color := ColorDialog1.Color;
                                . ( colors.bmp )
                                .
                                :
                                :
                                . ToolBar2      Edit
                                : Associate      Edit1      Win32      UpDown
                                :Edit1      OnChange
canvas.Pen.Width := strtoint(edit1.Text );
                                :
                                :

```

:

tbsCheck Style Toolbar1

:

Toolbar3.Visible := Not Toolbar3.Visible ;

Grouped

:

tbsCheck Style True



:

canvas.Brush.Style := bssolid;

:

canvas.Brush.Style := bsclear;

:

canvas.Brush.Style := bshorizontal;

:

Style

bsVertical – bsFdiagonal – bsbdiaognal – bsColor – bsDiagCross

:

: ToolBar3

If ColorDialog1.Excetue then canvas.Brush.Color := ColorDialog1.Color ;

:

Status bar

:

. Win32 StatusBar

Panel Editor 2

Add New

. 150 Width 0 3

: OnMouseDown 4

StatusBar1.Panels[0].Text := Format ('origin = %d , %d',[x,y]);

: OnMouseMove 5

StatusBar1.Panels[1].Text := Format ('Point = %d , %d',[x,y]);

:

.

:

1

:

. alClient

Align

Win32

ScrollBar

ScrollBar1

Image

2

True	AutoSize
0	Left
True	Stretch
0	Right

:

:

Image1

Picture

Picture

.Bmp

:

1

.

Image1

Bitmap

:

2

:

OnCreate

Var

Bitmap : TBitmap ;

Begin

Bitmap := Tbitmap.Create ;

Bitmap.Width := 200;

Bitmap.Height := 200;

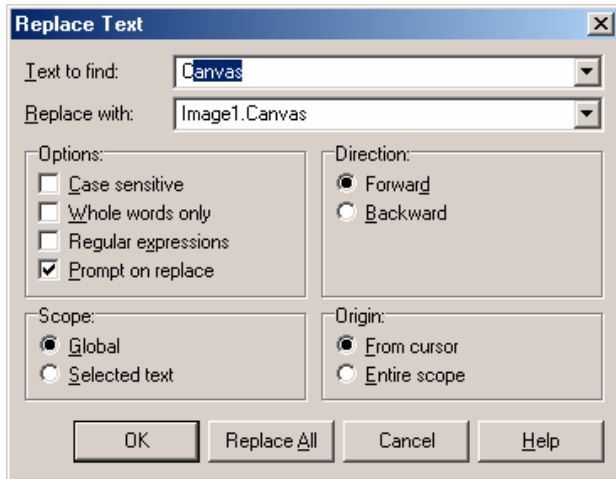
Image1.Picture.Graphic := Bitmap;

Bitmap.Free ;

:

Canvas

:



Form1MouseUp

Graph

1

: Search → Replace

Canvas Text To Find

Image1.Canvas Replace With

Replace All

Canvas.pen...

Image1.Canvas.pen..

Event

2

OnMousemove

OnMouseup

FormMouseMove

.. OnmouseDown

.



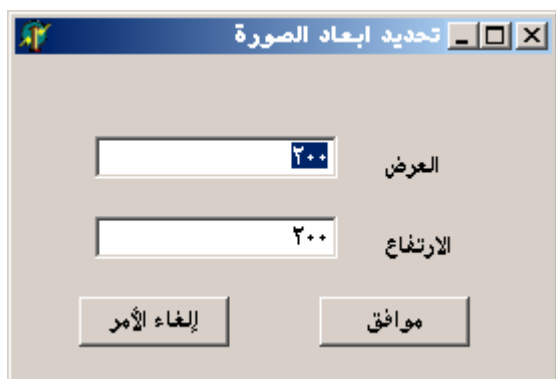
File

Standard

MainMenu

Edit

Close ;



CurrentFile : String;

Form2.ShowModal;

```

var bitmap : tbitmap;
begin
Bitmap := Tbitmap.Create ;
Bitmap.Width := strtoint(edit1.Text );
Bitmap.Height := strtoint(edit2.Text );
form1.Image1.Picture.Graphic := Bitmap;
bitmap.Free ;
Form1.CurrentFile := " ;
close;

```

Close; :

```

Image                                     Open                                     4
:
. Dialog                               OpenPictureDialog
:                                     File                               Open
if OpenPictureDialog1.Execute then
begin
  CurrentFile := OpenPictureDialog1.FileName;
  Image1.Picture.LoadFromFile(CurrentFile); end;

Save                                     3
CurrentFile = "                         CurrentFile
: Saveas1Click

. Save

if CurrentFile <> " then
  Image1.Picture.SaveToFile(CurrentFile)
else SaveAs1Click(Sender);
  : Save As                                     4
  Save As                                     SavePictureDialog
                                           File

if SavePictureDialog1.Execute then
begin
  CurrentFile := SavePictureDialog1.FileName;
  Image1.Picture.SaveToFile(CurrentFile); end;

:                                     5

QReport
: ( Qreport )
Print                                     Graph Uses Printers
:                                     File

printer.BeginDoc ;
printer.Canvas.Draw(0,0,image1.Picture.Graphic );
printer.EndDoc ;

. BeginDoc
Canvas Image1 ( ) Canvas.Draw
. EndDoc
: Draw StretchDraw
printer.Canvas.StretchDraw(rect(0,0,4000,4000),image1.Picture.Graphic );
. Rect

```

: Clipboard

:

CopyToClipboard

DbImage

Image

PasteFromClipboard

CutToClipboard

Clipboard

Graph

Uses

Clipboard

:

1

Copy

Clipboard.Assign(Image.Picture);

. Clipboard

:

2

:

: Cut

Var ARect :TRect ;

Clipboard.Assign(Image.Picture);

image1.Canvas.CopyMode := cmwhiteness;

ARect :=rect(0,0,image1.Width,image1.Height);

image1.Canvas.CopyRect(ARect,image1.Canvas,ARect);

image1.canvas.copymode := cmsrccopy;

TRect

)

: Canvas.CopyMode := cmWhiteness

. (

. Image

: ARect := Rect (0,0,...)

: Canvas.CopyRect(ARect,Image.Canvas,ARect)

ARect

. CopyMode := cmWhiteness

CopyMode

: Canvas.CopyMode := cmsrcCopy

:

:

```
image1.Picture.Bitmap.Assign(clipboard) ;
)
```

:

(

:

: Paste

```
if Clipboard.HasFormat(cf_BITMAP) then
image1.Picture.Bitmap.Assign(clipboard) ;
```

HasFormat (CF_BITMAP)

: ()

:

()

:

System

MediaPlayer

:

: 1

:

MediaPlayer

	C:\WINDOWS\MEDIA\ CHORD.WAV	Filename
	True	Autoopen

.

:

: 2

:

OpenDialog

.MP3 .WAV

OpenDialog1

Filter

.

```
MediaPlayer1.Close ;
if openDialog1.Execute then begin
MediaPlayer1.FileName := Opendialog1.FileName ;
MediaPlayer1.Open ;
end;
```

MediaPlayer

.

MediaPlayer.Open

MediaPlayer

.

:

MediaPlayer

Panel

.AVI

OpenDialog1

Filter

Panel1

Display

. .MPG .DAT

: ()

C:\Program Files\Borland\Delphi6\Demos\CoolStuff\ speedis.avi

Play

.

: MediaPlayer

: SpeedButton

OnMouseUP

Uses

MMSystem

SpeedButton

PlaySound('C:\WINDOWS\MEDIA\DING.WAV',0,0)

.

```

:
:
:

C:\temp          Test.Bmp      C:\
: C:\temp
copyfile('c:\Test.bmp','c:\Temp\Test.bmp',False) ;
. (              ) :
(              ) :
          'C:\Temp\Des.bmp'
          C:\temp\des.bmp      C:\test.bmp
          .
          True :
          False
          : 2
          ) :
          :
Movefile('c:\temp\test.bmp','c:\movetest.bmp');
. (              ) : 3
          :
DeleteFile('c:\movetest.bmp');
          : 4
) : 1
Rewrite  Reset  AssignFile ) ( Untyped File
          ( .. CloseFile  Writeln  Readln
          .
          : ( File Handles ) 2

Windows Api

. SysUtils

```

```
TFileStream (
    TMemoryStream TStream
```

: (Working With File Handles)

```

:
: ( )
:
```

```
var FileHandle:integer;
S:string;
Begin
if Not FileExists('c:\MyFile.mka') then
FileHandle:= FileCreate('c:\MyFile.mka') Else
FileHandle:= FileOpen('c:\MyFile.mka',fmOpenReadWrite) ;
s:= 'khaled Nassr Agha' ;
FileWrite(FileHandle,Pointer(s)^,length(s ));
Fileclose(FileHandle);
end;
```

```

True FileExists
FileHandle FileCreate
FileOpen
fmOpenReadWrite FileHandle
FileHandle S FileWrite
. S
FileClose
:
Memo
```

```
var FileHandle,FileSize : integer;
s:string;
begin
if FileExists ('c:\MyFile.mka') then begin
FileHandle:= FileOpen('c:\MyFile.mka',fmOpenReadWrite) ;
```

```
http://www.alshater.net
FileSize:=getfilesize(FileHandle,nil);
setlength(s,FileSize);
Fileread(FileHandle,pointer(s)^,FileSize);
Memo1.Text := s;
Fileclose(FileHandle);
end;
```

Handle : SeekFile (Handle, Offset ,origin)

: Origin Origin Offset

Offset	0
Offset	1
Offset	2

SeekFile(FileHandle,0,0)

. 12 Seekfile(FileHandle,12,2)

: File Stream

:

: TFileStream

:

```
Var FileStream : TFileStream ;
```

```
buffer : String;
```

```
begin
```

```
FileStream := TFileStream.Create('c:\MyStream.tst',fmCreate) ;
```

```
Buffer := ' This Line Will Be Save to File ' ;
```

```
FileStream.Write(pointer(Buffer)^,Length(Buffer));
```

```
FileStream.Free ;
```

```
end;
```

fmCreate

C

MyStream.Tst

TFileStream.Create

() Buffer

: FileStream.Write

FileStream

: FileStream.Free

: TFileStream

:

Memo

```
Var FileStream : TFileStream ;
```

```
buffer : String;
```

```
FileSize : integer;
```

```
begin
```

```
FileStream := TFileStream.Create('c:\MyStream.tst',fmOpenRead) ;
```

```
FileSize := (FileStream.size) ;
```

<http://www.alshater.net>

```
Setlength(Buffer,FileSize);
FileStream.read(pointer(Buffer)^,FileSize);
memo1.text := Buffer;
FileStream.Free ;
end;
```

FileStream.Size

Create

SetLength

Buffer

. Memo1

Buffer

:

(Origin

Seek

: FileStream.Seek

1

.(

SeekFile

Origin

:

:

:

Calc.exe

:

WinExec('C:\Windows\Calc.exe',Sw_Show) ;

.

C:\Windows

:

Windows Windows 2000

Windows Me Windows 98

C:\Win32 Xp

GetWindowsDirectoy :

GetWindowsDirectory

)

Pchar

p (p,200);

. FreeMem(p,200)

GetMem(p,200)

:

2

(Microsoft Word)

:

.

Uses

ShellApi

shellapi.ShellExecute(0 ,'Open','C:\My Documents\Test.doc',Nil,Nil,0) ;

. My Document

Test.doc

. 'Print'

'Open'

C:\Mypicture.jpg

Internet

. Explorer

:

:

shellapi.ShellExecute(0 , 'Open', 'C:\My Documents', Nil, Nil, 0) ;

. C:\My Document

:

(Notepad)

MDI

Txt

Rtf

.

OpenDialog

MainMenu

:

: Form1

bdRightToLeft	BiDiMode
	Caption
fsMDIForm	FormStyle
MainForm	Name
poDesktopCenter	Position

:() () : MainMenu

: () FileMenu Name ()

Shortcut	Name	Caption
	New	&
	OpenFile	&
	CloseApp	&

: () Window1 Name ()

Shortcut	Name	Caption
		-

: OpenFileDialog1

	.rtf	DefaultExt
Filter		Filter
Filter Name	Filter	
Rich Text	*.rtf	
Text File	*.Txt	
All File	*.*	

. MyTextEditor.Dpr

Main.pas

MainMenu : File → New → Form

.FontDialog PrintDialog SaveDialog Win32 RichText

:

bdRightToLeft	BiDiMode
fsMDIChild	FormStyle
EditForm	Name

() () () MainMenu1

:

: () FileMenu Name ()

Shortcut	Name	Caption
	New	&
	OpenFile	&
Ctrl+S	Save	
	SaveAs	
	PrintFile	
	CloseFile	
	CloseAll	&

: () EditMenu Name ()

Shortcut	Name	Caption
Ctrl+C	CopyText	
Ctrl+X	Cuttext	
Ctrl+V	PasteText	
Ctrl+A	SelectAll	

: () EditMenu Name ()

Shortcut	Name	Caption
	Left1	
	Right1	
	Center1	
		-
	WordWrap1	
	Font1	
True	RadioItem	

.

: Richedit1

alClient	Align
Editor	Name

: Savedialog1

.rtf	DefaultExt
: Filter	Filter
Filter Name	Filter
Rich Text	*.rtf
Text File	*.Txt

EditText.pas

—

: MainForm

TEditForm.Create(Self);

Self

:EditForm

—

TEditForm.Create(Self);

: EditForm OnClose

—

Action := CaFree ;

CaMinimized

()

(TrichEdit) Editor

:

. EditText

Private

String

PathName

:

—

const

DefaultFileName = ' ';

: EditText public

—

Procedure Open(const AFileName: string);

Ctrl+Alt+C

:

Implementation

PathName := AFileName;

http://www.alshater.net

```

Caption := ExtractFileName(AFileName);
with Editor do
begin
  Lines.LoadFromFile(PathName);
  SelStart := 0;
  Modified := False;
end;

. : ExtractFileName ( AFileName)

: With Editor Do begin .... End;
Editor.Lines.LoadFromFile(PathName);
Editor.SelStart := 0;
Editor.Modified := False;

. Width
. Editor Editor.selstart := 0
. True Editorr.Modified

: MainForm
If OpenFileDialog1.Execute Then
TeditForm.Create(Self).Open(OpenDialog1.FileName ) ;

. Open Then

: EditForm
MainForm.Openfile.Click ;

.
: EditForm OnCreate

PathName := DefaultFileName;

. PathName

:

rtf TRichEdit Editor
Editor Tstrings Txt rtf
. .Txt ÷
: EditForm

var S: Tstringlist;
begin
if PathName = DefaultFileName then
  SaveAsClick(Sender)
else
begin
if uppercase(rightstr(PathName,3)) = uppercase( 'rtf' ) then
  Editor.Lines.SaveToFile(PathName) else
try

```

```
http://www.alshater.net
S:=Tstringlist.Create ;
s.AddStrings(Editor.Lines )
finally
s.SaveToFile(PathName) ;
end;
Editor.Modified := False;
end;
```

```
" " PathName

: PathName

) Editor.Lines.SaveToFile(PathName) rtf 1
'rtf' PathName

TStringList S Txt 2
Editor.Modified False Editor

:

: EditForm
SaveDialog1.FileName := PathName;
if SaveDialog1.Execute then
begin
PathName := SaveDialog1.FileName;

Caption := ExtractFileName(PathName);
SaveClick(Sender);
end;

PathName
SaveClick ( Sender )

:

: EditForm
Close;

:
: MainForm
Close;
```

```

: EditForm
MainForm.CloseApp.Click ;

```

```

: EditForm OnCloseQuery
Const
SWarningText = '
begin
if Editor.Modified then
begin
case MessageDlg(Format(SWarningText + #13 + '%s', [PathName]), mtConfirmation,
[mbYes, mbNo, mbCancel], 0) of
mrYes: SaveClick(Self);
mrCancel: CanClose := False;
end;
end;
end;
end;

```

```

OnCloseQuery
CanClose
False True
True ) Editor.Modified
: (
. SaveClick : Yes
: No
CanClose : Cancel
False
MessageDlg #13
Enter
:
:
Editor.CopyToClipboard;
:
Editor.CutToClipboard;
:

```

Editor.PasteFromClipboard;

:

Editor.SelectAll;

Editor

()

:

Copytext.Enabled := editor.SelLength > 0;

Cutttext.Enabled := editor.SelLength > 0;

Pastetext.Enabled := clipboard.HasFormat(CF_text);

. EditForm

uses

ClipBrd

Editor

SelLength

.

:

:

with Sender as TMenuItem do Checked := True;

with Editor.Paragraph do

if Left1.Checked then

Alignment := taLeftJustify

else if Right1.Checked then

Alignment := taRightJustify

else if Center1.Checked then

Alignment := taCenter;

OnClick

() ()

. Left1Click

Event

:

with Editor do

begin

WordWrap := not WordWrap; { toggle word wrapping }

if WordWrap then

ScrollBars := ssVertical

else

ScrollBars := ssBoth;

WordWrap1.Checked := WordWrap; { set menu item check }

end;

:

FontDialog1.Font := Editor.Font;

if FontDialog1.Execute then

Editor.SelAttributes.Assign(FontDialog1.Font);

```

Memo
Memo
RichEdit
SelAttributes
: MainForm
(
:
. GroupIndex 1
1 0
GroupIndex 2
.
GroupIndex
:
MainForm.Tile
.
:
MainForm.Cascade;
.
:
WindowsMenu
MainForm
(
) Window1
.
( Setup )

```

: Install Shelled Express

.....

Install Shelled Express

Install Shelled Professional

Install Shelled Express

:

Install Shelled Express

Start → Program → IntallShelled → Express – Borland Limited Edition .

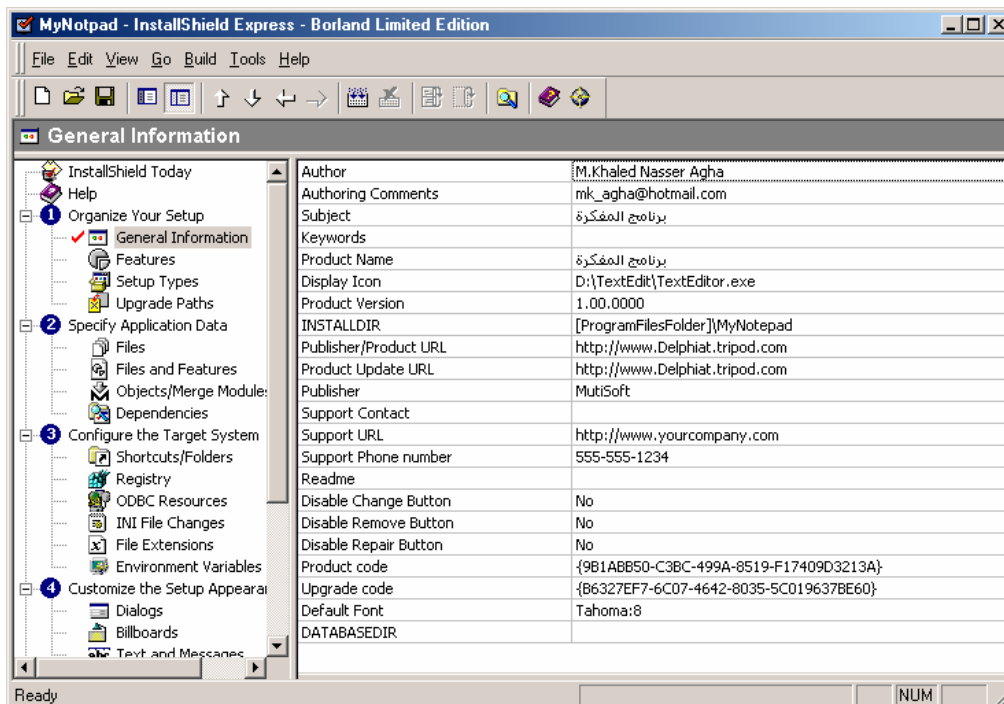
: Create new project

C:\My Documents\MySetups\MyNotpad.ism

Project name and location

. Create

General Information



: INSTALDIR

: Product Name

Setup Types

(Minimal)

(Typical)

(Custom)

Typical

Files

)

.Exe

...

Destination Computer

Source Computer's

INSTALLDIR

. Folder

Destination

Source Computer's Files

TextEditor.Exe

Computer Files

:

: Object/ Merge Modules

BDE

: BDE_ent

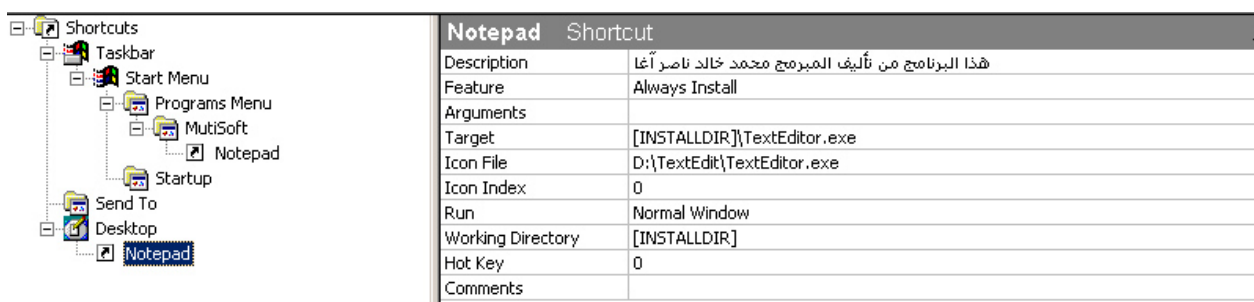
Alias

... . QuickRep

: QuickReport

:

: Shortcuts /folder's



New Folder

Program Menu

New Shortcut

Notepad

Win2000

:Description

)

: Target

. INSTALLDIR\TextEditor.exe

: IconFile

: Working Directory

.(

. Startup

)

Registry

. (

Dialog

)

. (

Requirement

(2000)
...

Custom

Build your release

:

)

: Media Size

. (1.38

1

Gb Mb

: Media Size Unite

.

1024 512

: Cluster Size

)

True

: Compress Media

. (

Setup.exe

: Setup.exe

Setup.exe

Msi

True

Msi

. Setup.exe

instmsia.exe

: Include Msi Win9x engine

Msi

) Msi

Msi

(Msi

instmsia.exe

. True

.... instmsiw.exe

: Include Msi Windows Nt engine

True

: Generate AutoRun.inf

. DVD

Build

Build Custom

build completed with 0 errors, 0 warnings

Run Your

Custom

Test Your Release

Setup

C:\My Documents\MySetups\MyNotpad\Express\Custom\DiskImages\DISK1

Custom Distributed your release

... A:\

Install Shelled :

		Visual Basic .Net
		http://www.arabdevelopers.com
		http://www.arabteam2000.com
		http://www.delphiforfun.com