



مركز التقانة الصناعية

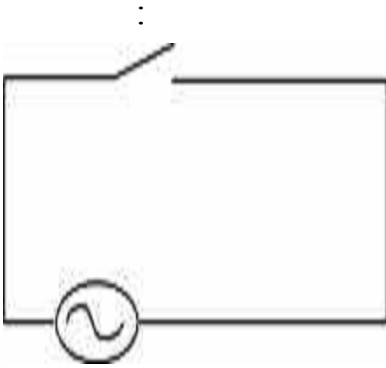
دورة في
أنظمة التحكم الإشرافي وتحصيل المعطيات

SCADA

م. محمد حسام كرزون

:SCADA

SCADA



on off

SCADA

100km

2000

2000

2000

2000

:

SCADA

SCADA

SCADA

. SCADA

: SCADA *

: *

Software

Hardware

SCADA

Hardware

(Software) SCADA

plc

plc

SCADA

SCADA

. SCADA

SCADA

:

: SCADA

-1

-2

-3

-4

-5

-6

(Trends)

-7

()

-8

-10

-11

-12

(E-Mail)

:

Scada

-1

()

-2

-3

-4

-5

-6

:

-1

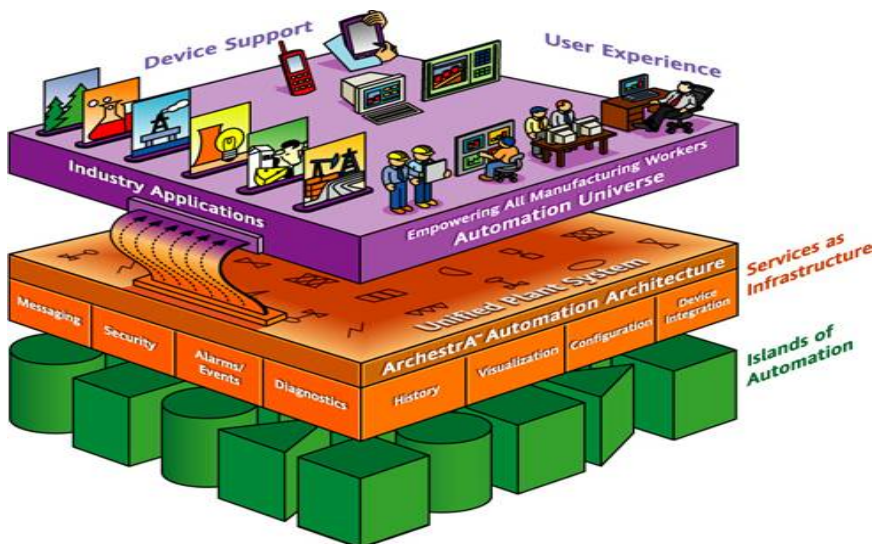
-2

-3

:SCADA

SCADA

/



Client-

Client-Server Architecture

Interface

Server

:

communications with I/O Devices, Monitoring Of Alarm Conditions , report type output, Trending , and user display.

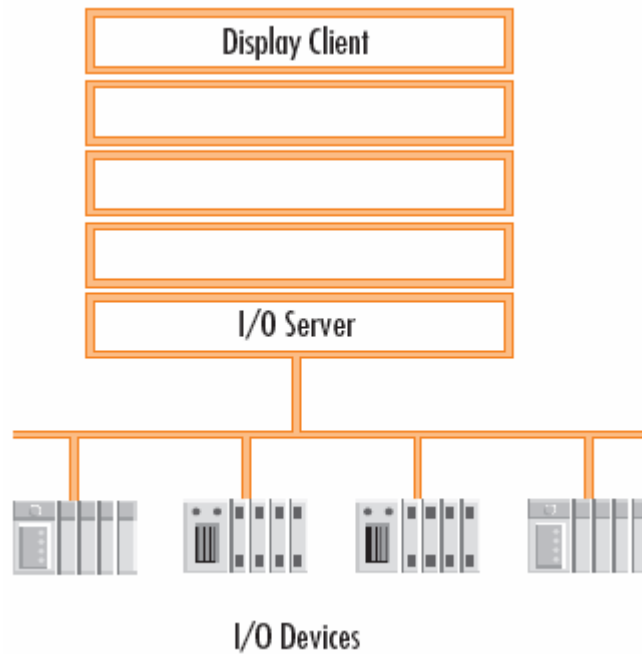
Servers

Servers

Server

I/O Server : SCADA

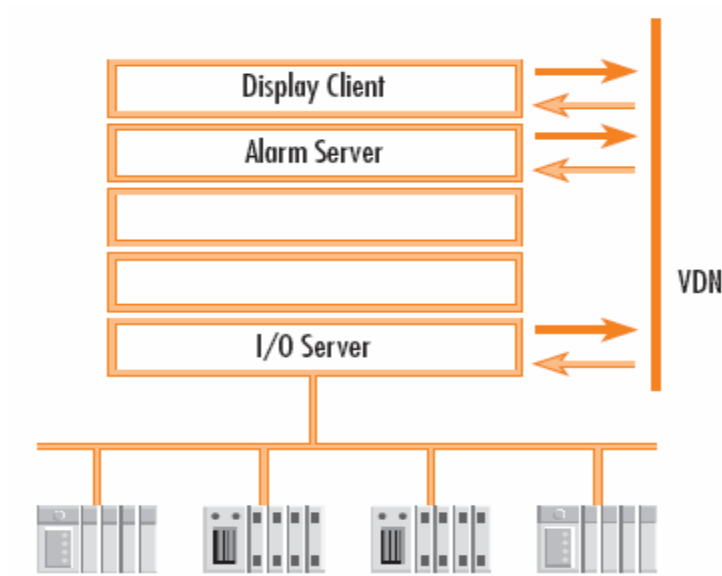
Servers /



Alarm Sever

I/O Server

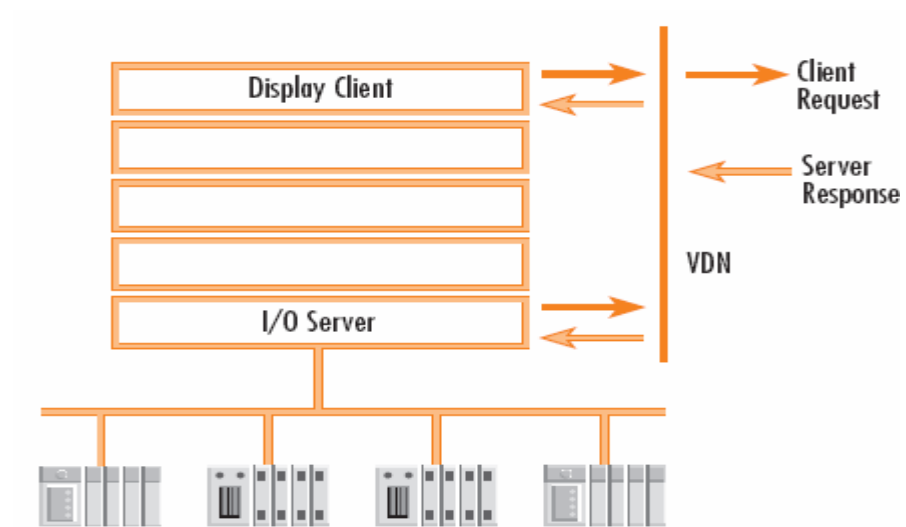
Display Server



I/O

Display Client

I/O Server

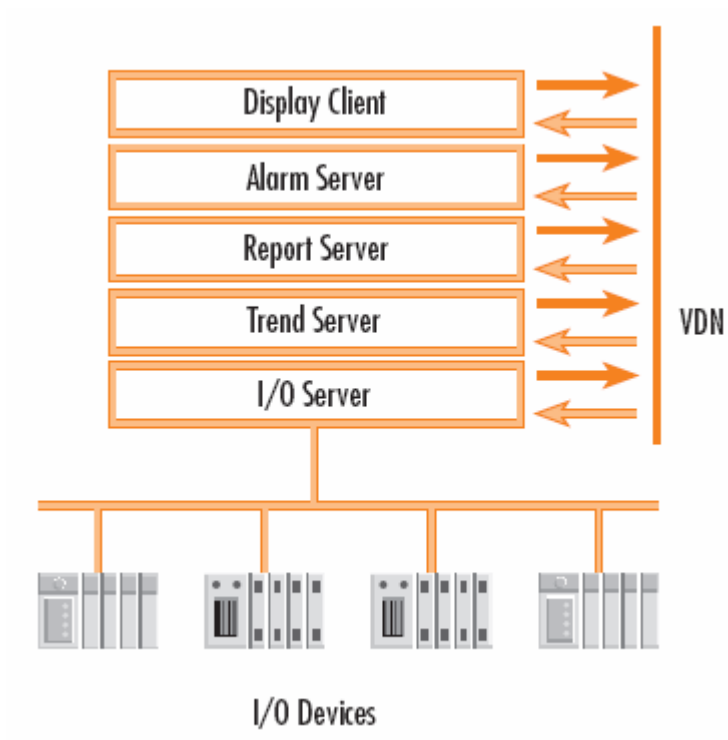


I/O Devices

Trends and Report Servers

Alarm Server

I/O Server



Trends Server Alarm Server Report Server

PC Mouse

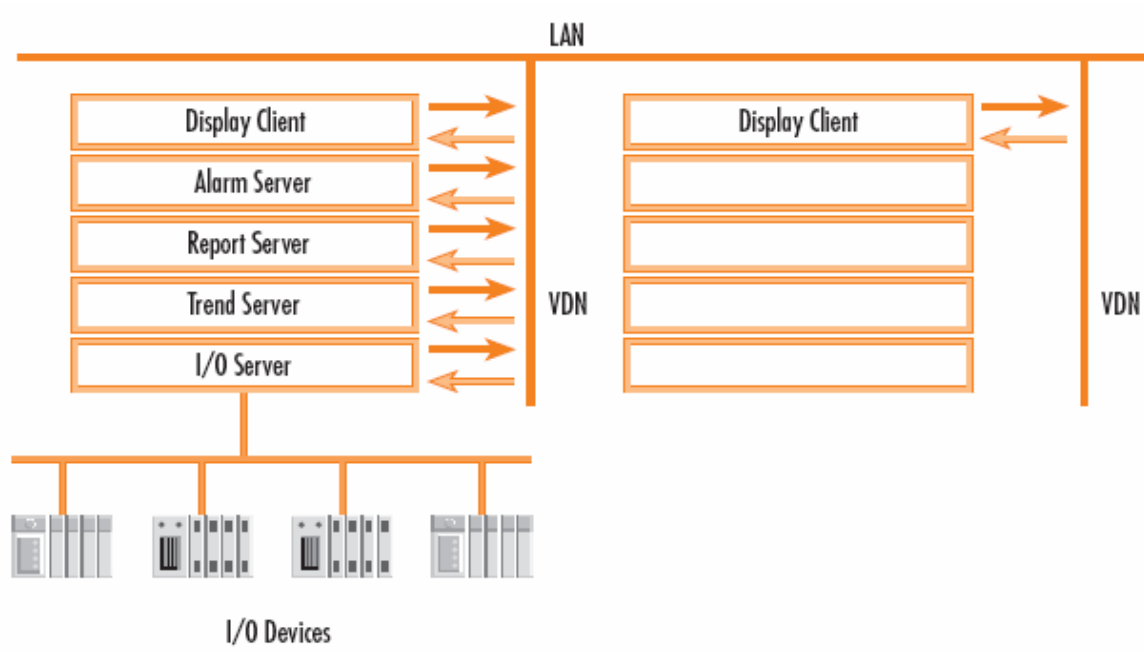
Servers

VDN

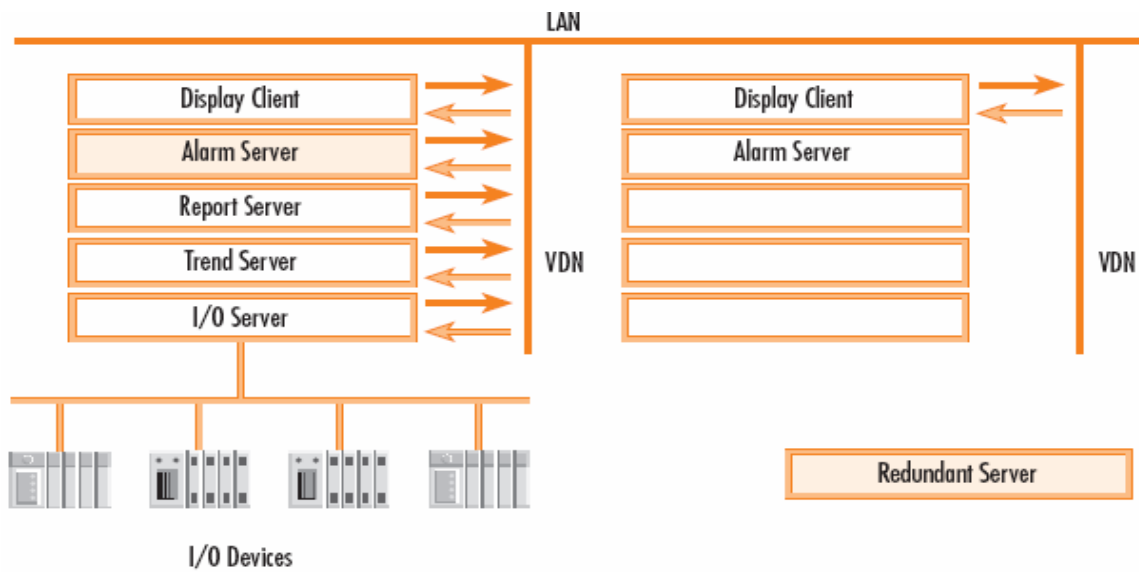
Server

LAN

VDN



Alarm

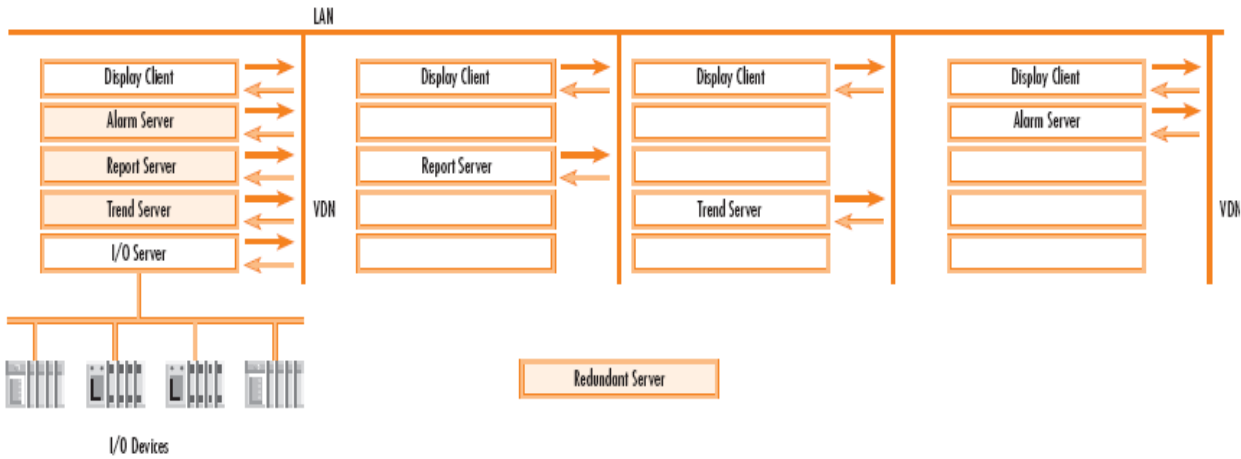


LAN

PCS

Client Server

Client Server



:SCADA

: Flexibility

-1

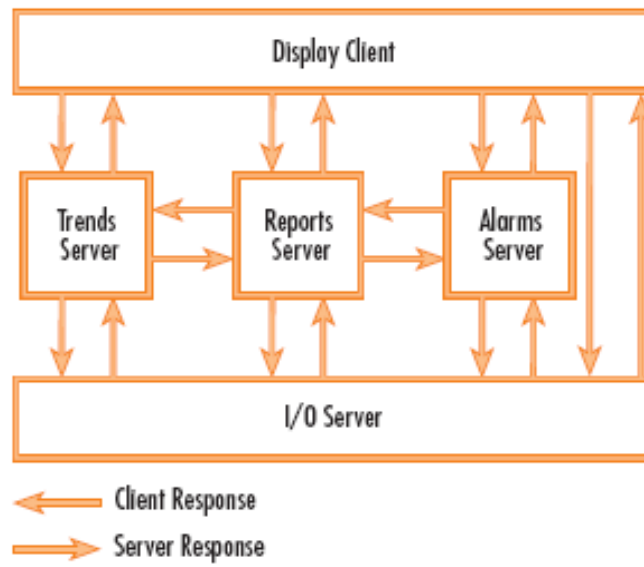
:I/O -1

:Alarm -2

:Reports -3

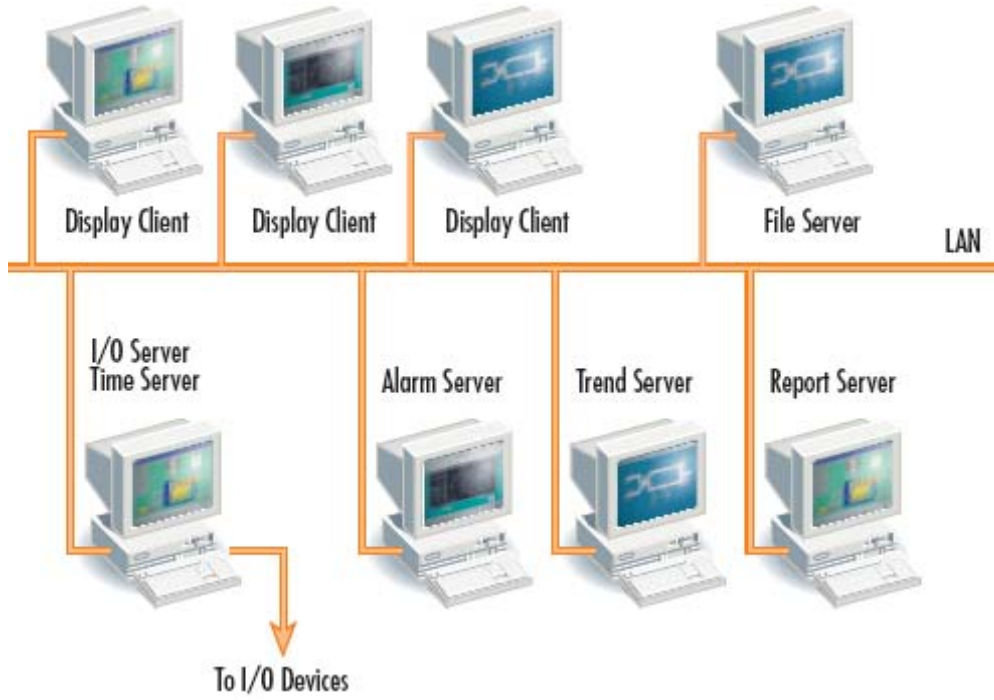
:Trends -4

:Display -5



Networked Systems

SCADA



-2 :

Software Hardware
Server-Client

HMI :

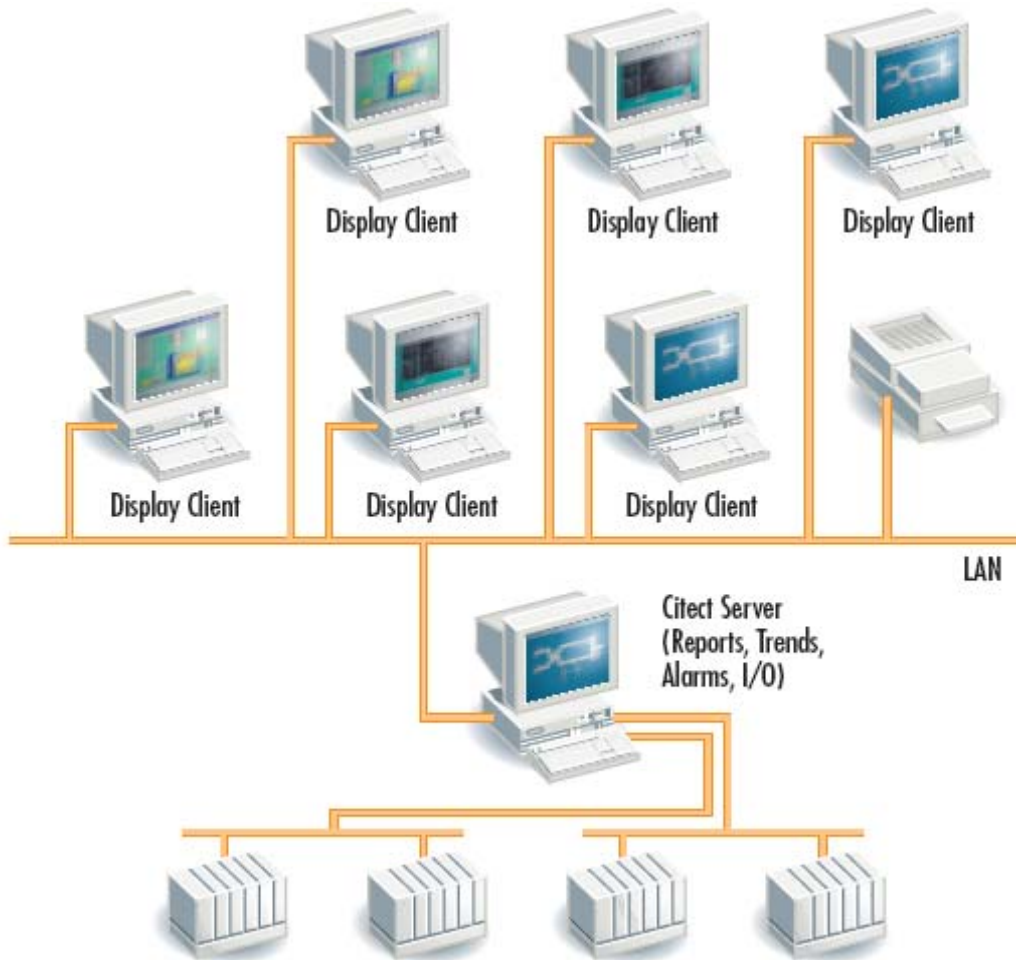
LAN

Client Display

./
/

LAN

SCADA



:

Hardware

SCADA

SCADA

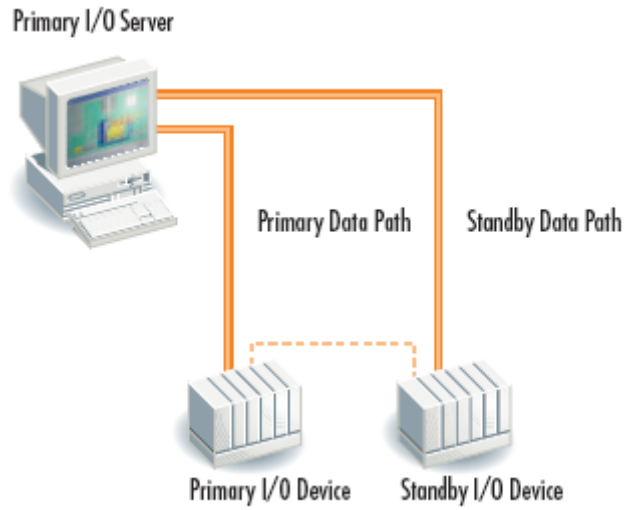
Server

:

SCADA

(Standby)

SCADA



()

/

LANS

SCADA

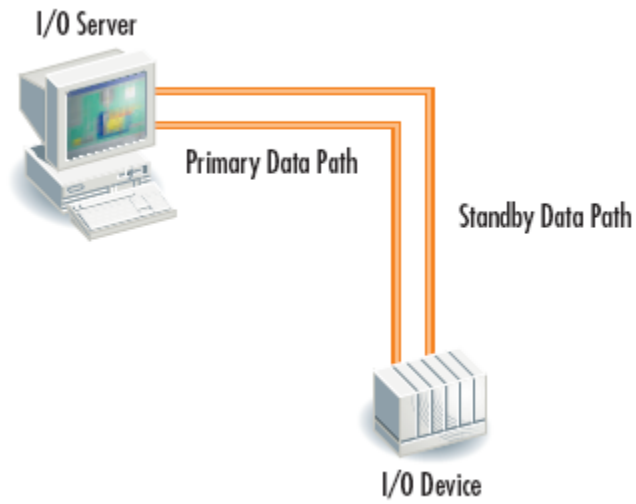
SCADA

SCADA

LAN1

LAN

LAN2



Server

SCADA

SCADA

SCADA

I/O Alarm Trends Display Report : SCADA

Server

Server

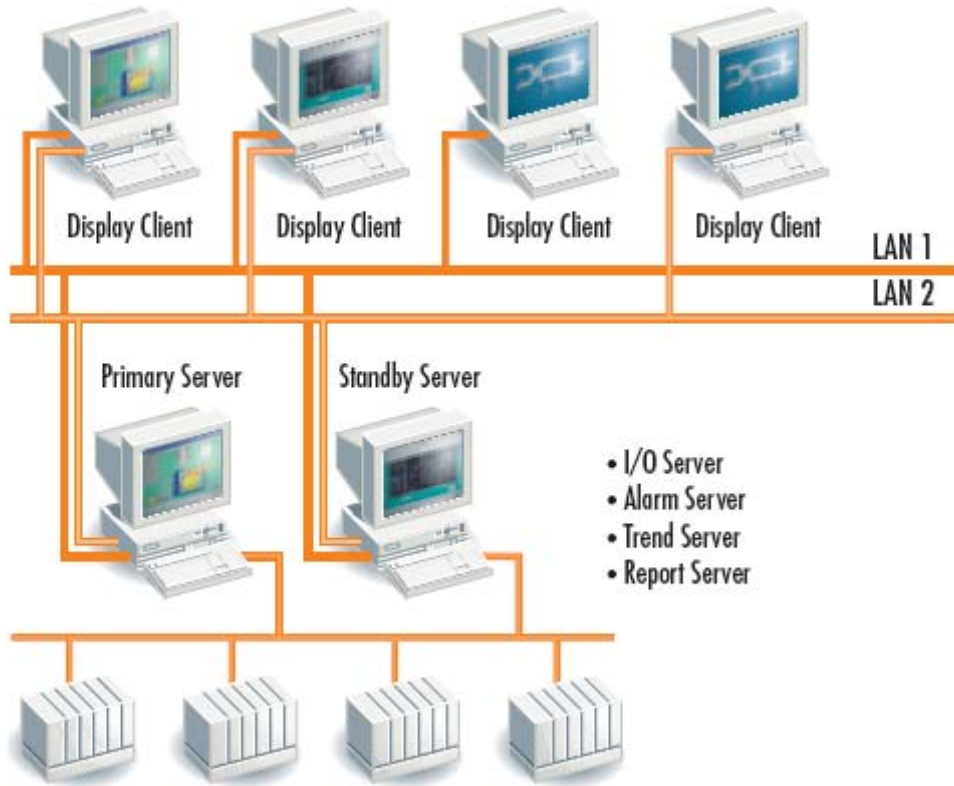
Server

()

Scada

Trend Server Alarm Server

SCADA



:

Scada

Laptop PC

.

SCADA

.

:

Server

Client Internet

Interne Client

Internet Client

HTML

Server

TCP/IP

Internet Client

:()

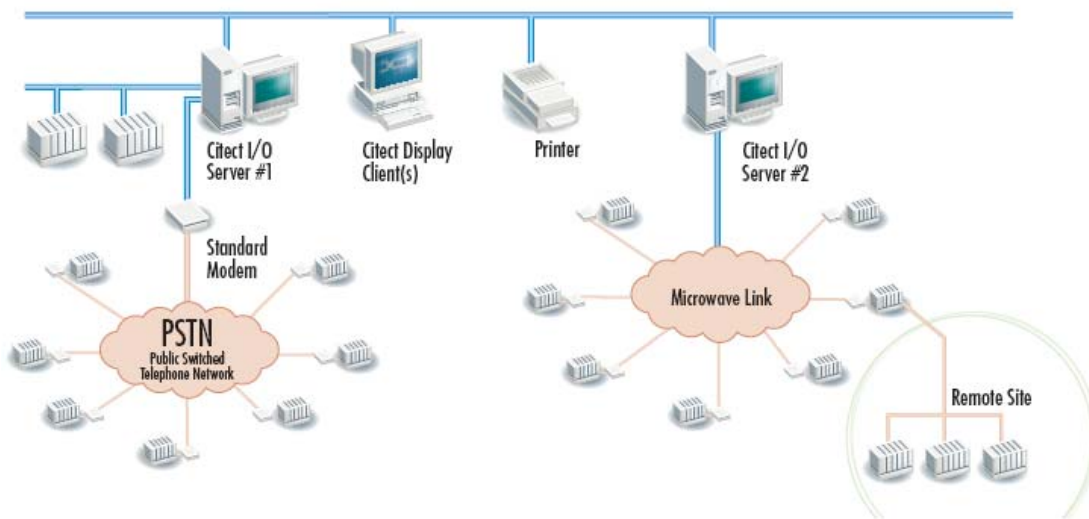
Internet Client

Citect

. Client

: /

Modems



Servers I/O 255

PSTN

Microwave Link (Public Switched Telephone Networked)

I/O

Citect SCADA

SCADA Citect

RTU PLC

(Remote Terminal Unit)

Server

/

Modem

:Citect SCADA

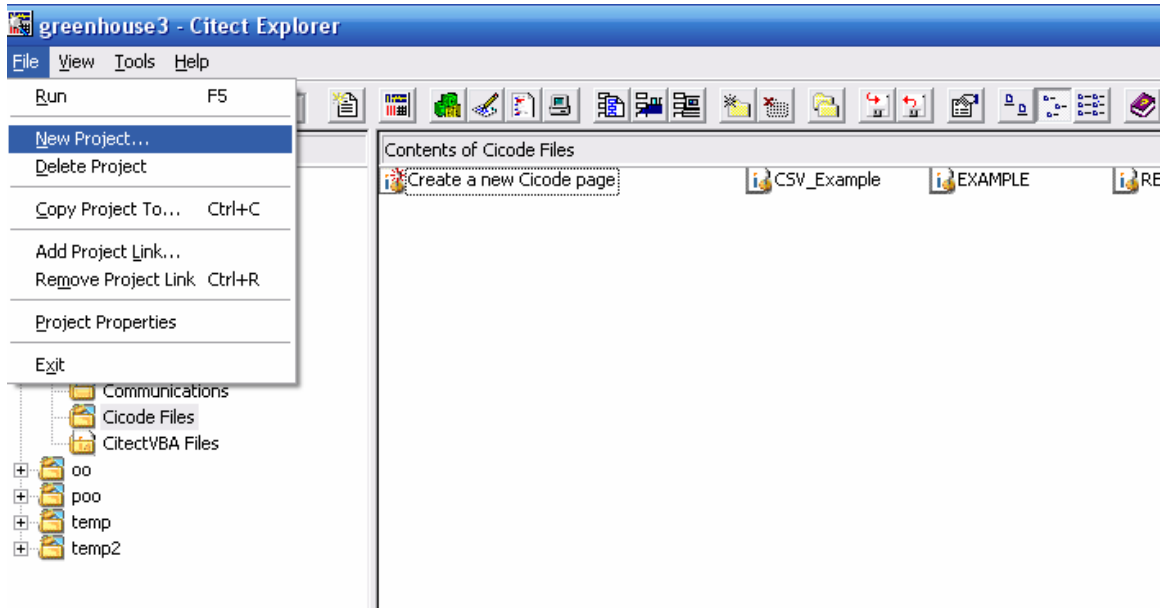
Citect SCADA

Citect Graphic Builder Citect Project Editor Citect Explorer

I/O

IO Server

Display Client Trend Server Alarm Sever Data Server



Communication : I/O Device -2

Express I/O Device Setup
Server

PLC : -

PLC

PLC

PLC

. Help

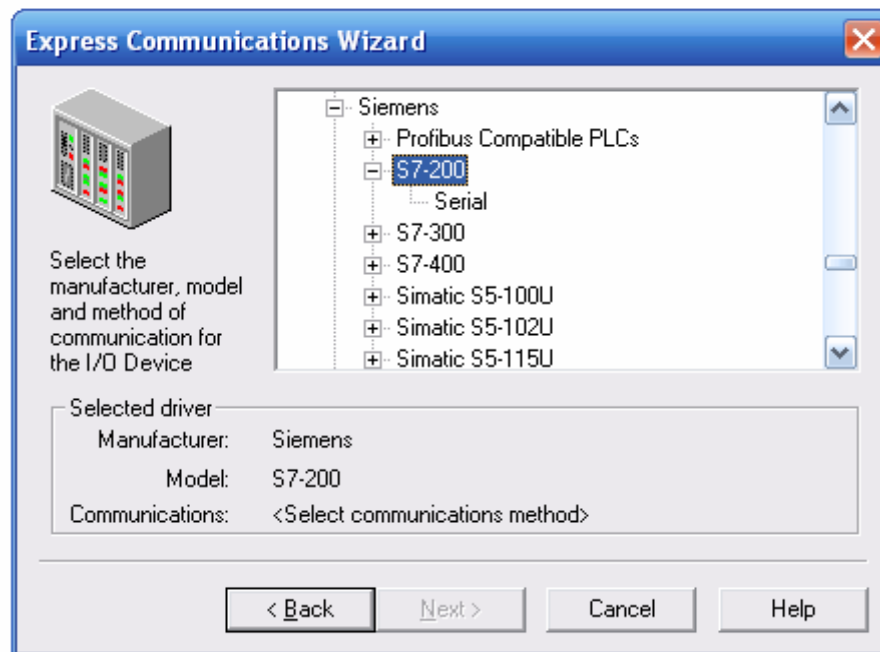


PLC

PLC

PLC

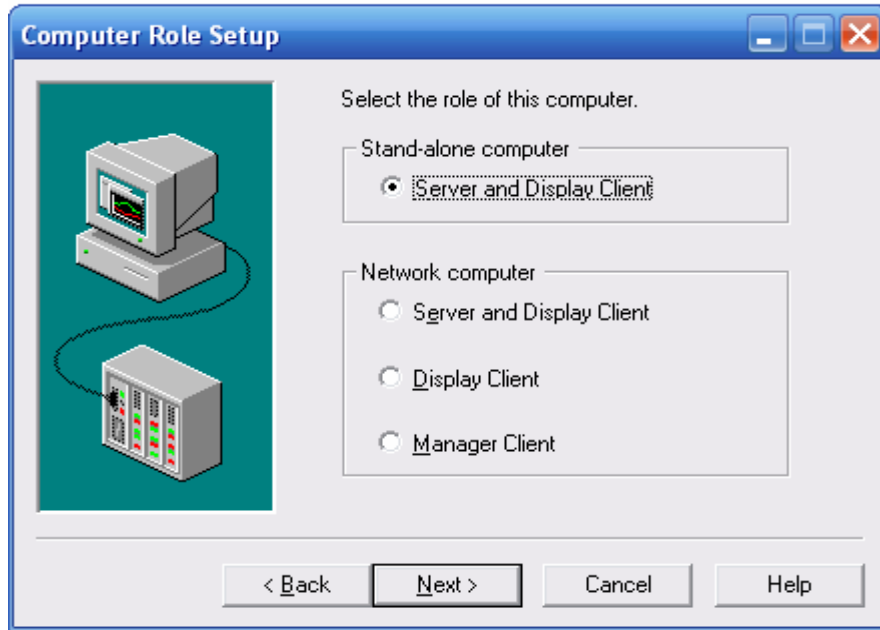
Citect



Computer Setup

Tool

Computer Setup



..... Report Trend Alarm

:

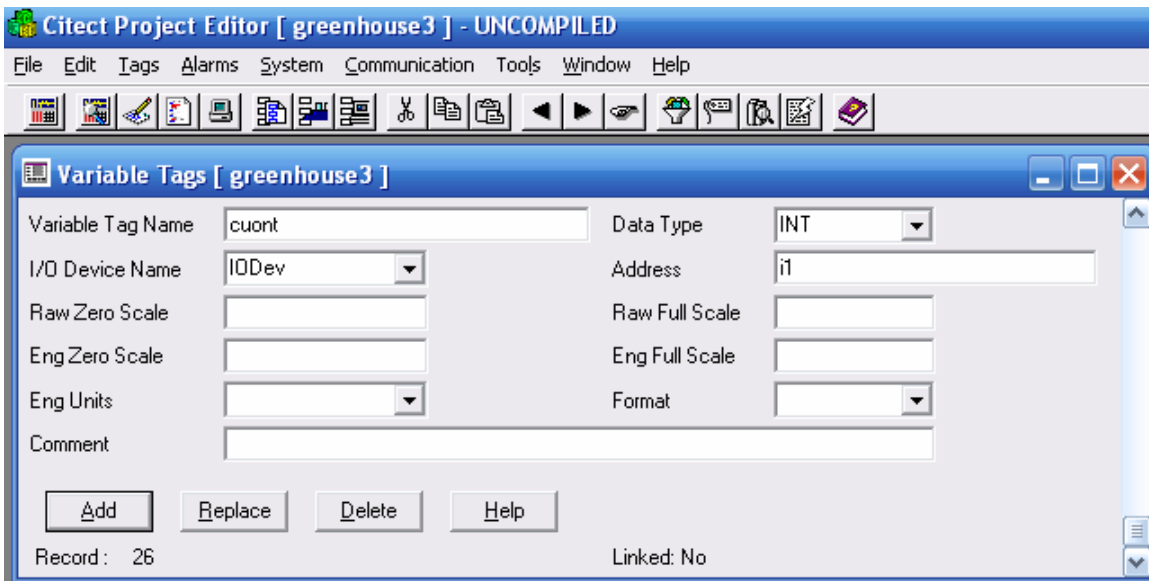
Project Editor

Tags

Variable Tags

(.....Integer Analog Digital)

add



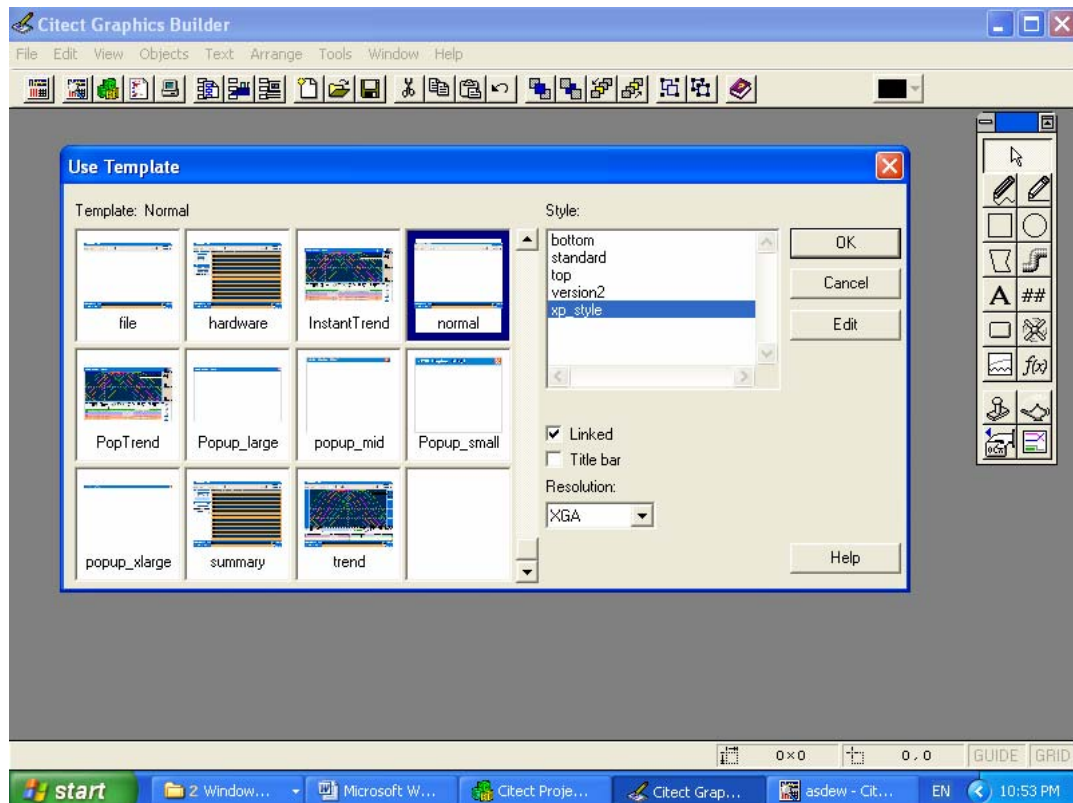
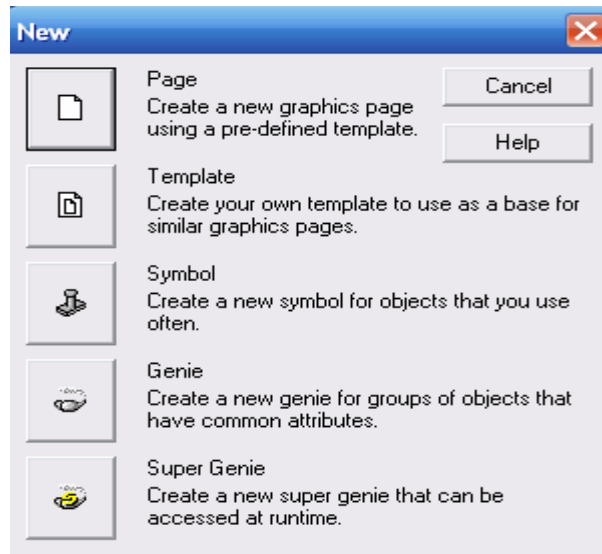
:

New File Graphic Builder

Genie Symbol Template Page

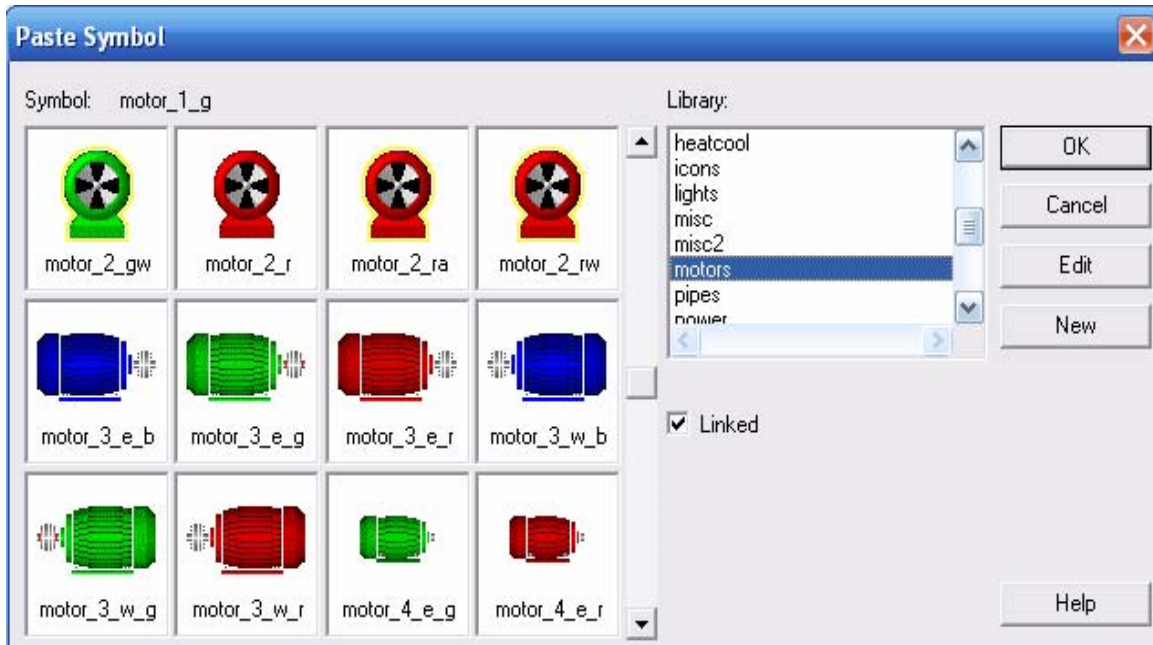
Page

Super Genie

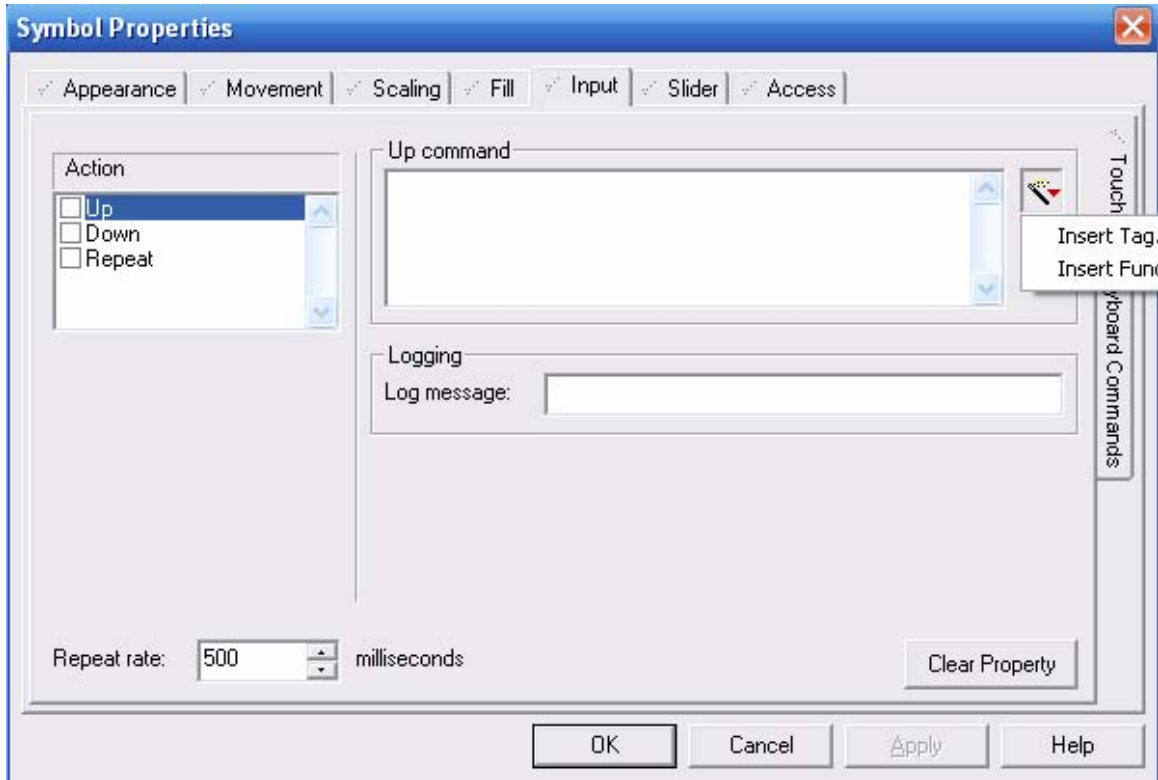


Paste Symbol

Motors



Insert Tag

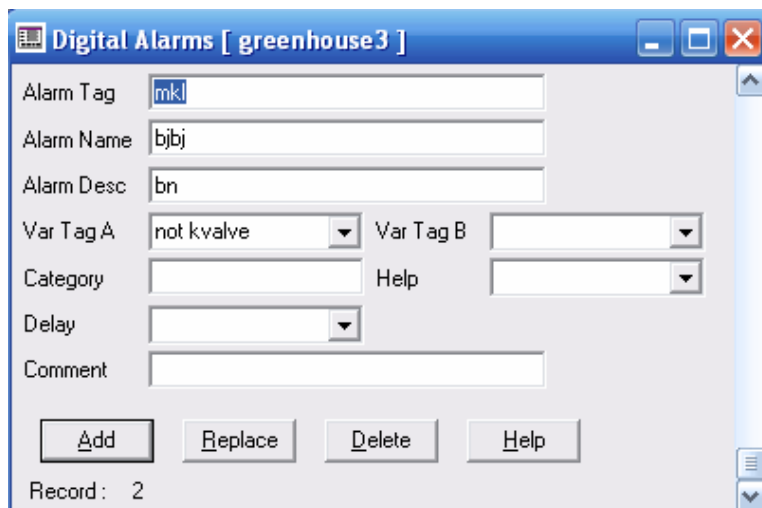


Logging

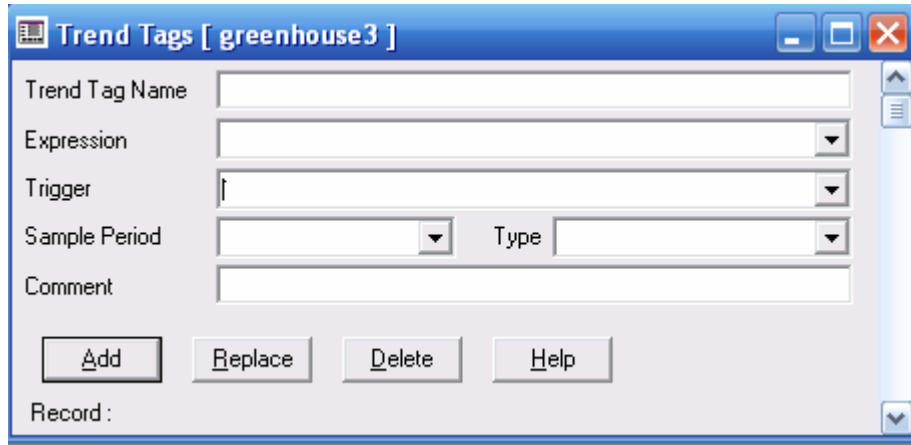
Alarms

Project Editor

(...,Digital, Analog)



(Trends Project Editor Trends



Tools

Citect Explorer

Editor Cicode

Delphi

VBASIC

VBASIC

Help

```
FUNCTION
OpenRecipe()

    IF hRecipe < 0 THEN
// CHANGE: use your own recipe name here, from device database //
        hRecipe = DevOpen("Recipes");
        IF hRecipe >= 0 THEN
            DatabaseToMemory();
        ELSE
            DspError("@(Cannot Open Recipe Database)");
        END
    END
END

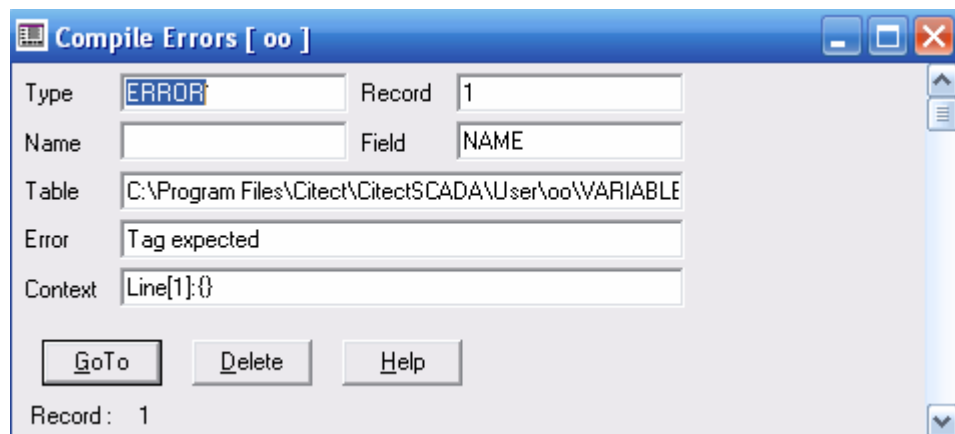
// FUNCTION: SetBatchSize
//
// DESCRIPTION: This function sets the batch size for the recipe.

FUNCTION
SetBatchSize(INT newBatch)

    Batch = newBatch;
    TotalPLC = SugarPLC + WaterPLC + MilkPLC + SaltPLC + FlourPLC;
    batchTotal = totalPLC * newBatch;
END
```

Run

Compile



:
